

Durack Centre

263 Adelaide Terrace, Perth WA
2 Victoria Avenue, Perth WA

Now
leasing



Welcome



Prime positioning

Durack Centre, home of 263 Adelaide Terrace and 2 Victoria Avenue, is perfectly positioned with Langley Park and the Swan River at your fingertips and Perth CBD a stone's throw away.

The properties' addresses benefit from strong connectivity to public transport and Perth's road and freeway network.

At Durack Centre, you will find flexible office solutions in a contemporary A-grade building with high retail and health and wellbeing amenity, connectivity and expansive river views.

Both buildings feature spacious, efficient floor plates, modern end-of-trip facilities, on-site cafe and gym.

Find the space that will allow your business to thrive at Durack Centre.



Everything, and more

Durack Centre is easily accessed by Mounts Bay Road, the Causeway, Graham Farmer Freeway and major arterial roads. It is well connected via public transport including the CAT bus service and Mclver Train Station.

Nearby Perth CBD amenities include the Treasury Precinct, as well as direct access to Langley Park and the Swan River.

The area is increasingly reaching its potential as a world-class place for innovation and collaboration with a strong employment focus. Think food, retail, cafes, bars and restaurants, local sporting clubs, and health and family-oriented services.





Convenient local links

A-Grade location



Local amenities

- 1. Mclver Train Station
- 2. Royal Perth Hospital
- 3. Perth CBD

Fitness and wellbeing

- 4. Victoria Avenue Fitness Centre
- 5. Wellington Square (Moort-ak Waadiny)
- 6. Langley Park
- 7. Queens Gardens

Childcare

- 8. Bilingual By Five
- 9. Buggles Child Care Brookfield Place
- 10. Goodstart Early Learning East Perth

Hotels and accommodation

- 11. Pan Pacific Hotel Perth
- 12. Crowne Plaza
- 13. Mantra on Hay Perth
- 14. Duxton Hotel Perth

Services

- 15. Australia Post – East Perth Shop
- 16. No Birds Bayswater Car Rental
- 17. Woolworths Murray Street
- 18. Carlton Fresh

Experiences

- 19. Supreme Court Gardens
- 20. Gloucester Park
- 21. Perth Concert Hall
- 22. Western Australian Cricket Association

Cafes and restaurants

- 23. Bulgogi BBQ
- 24. Duotone East Perth
- 25. Tingkat
- 26. Hadiqa
- 27. Garum
- 28. Petition
- 29. Public House

Retail

- Murray Street Mall
- Forrest Chase
- London Court
- Raine Square
- Wesley Quarter



Image is indicative only.

Spaces to thrive

Durack Centre offers efficient, well thought out and flexible floor plates in a contemporary building. The building boasts large windows providing sweeping views of the district and natural light penetration.

[Click here](#) to view the current opportunities and to find the space for your business to thrive.

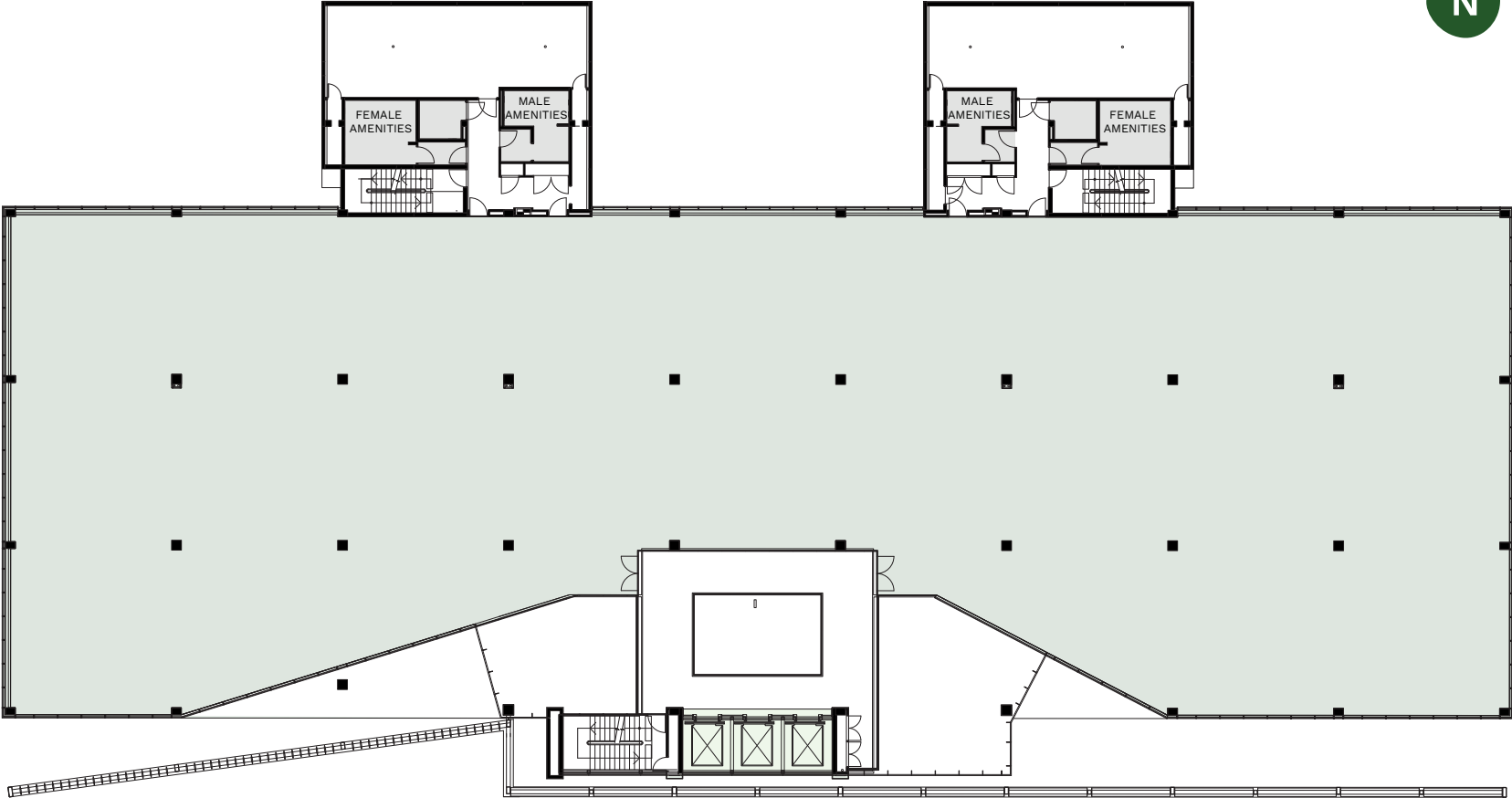


Image is indicative only.



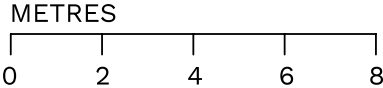
Whole floor plan (indicative)

2 Victoria Avenue



Key

- Lettable Area
- Lift Core
- WC Areas

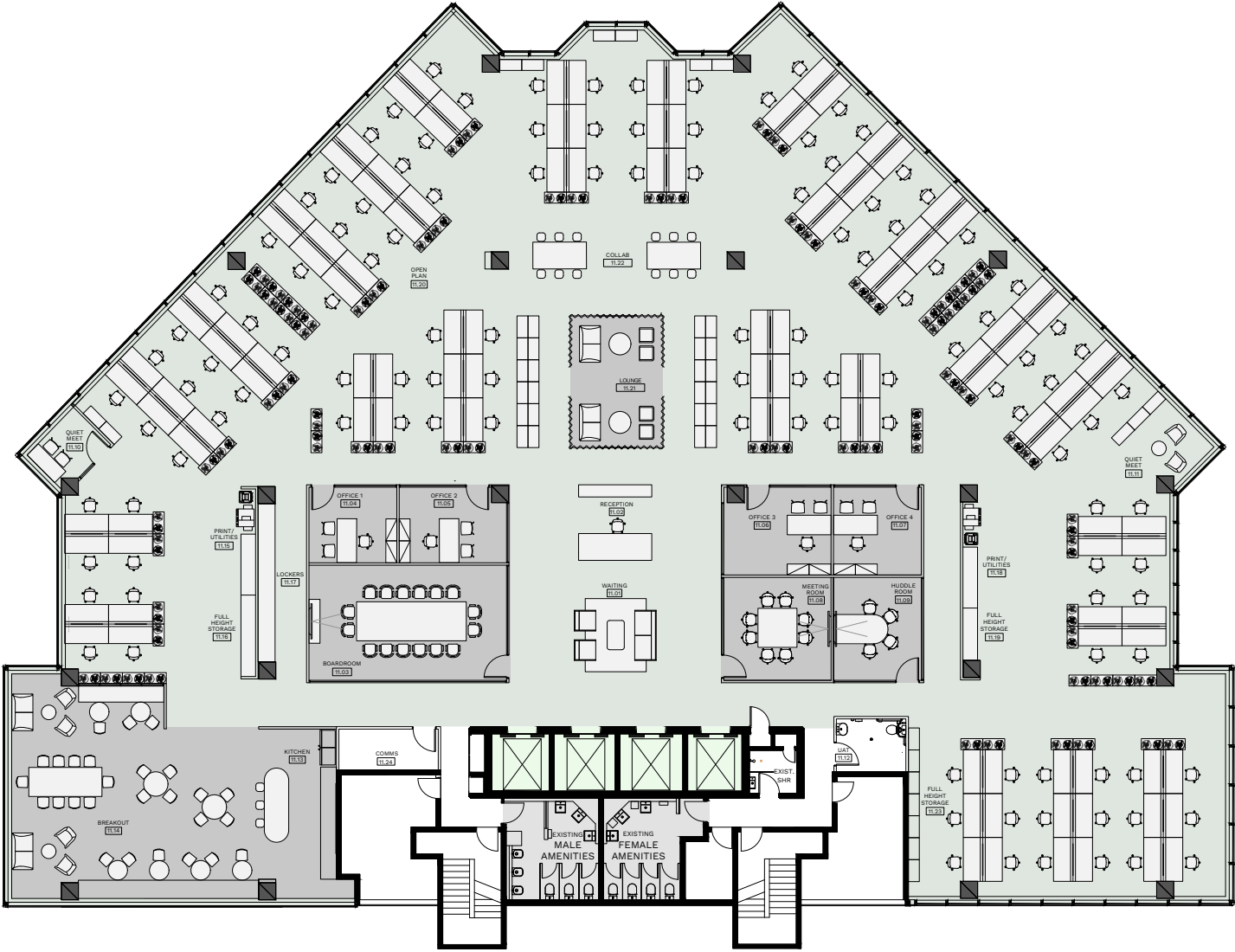


This plan is indicative only. Subject to change.



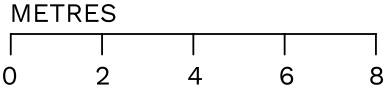
Spec suite fitout example

263 Adelaide Terrace



Key

- Lettable Area
- Shared Areas
- Lift Core
- WC Areas



This plan is indicative only. Subject to change.



Technical specifications 263 Adelaide Terrace

Building hours

- Monday–Friday, 7am–6pm
- Tenant access is available 24/7

Air conditioning

- Air conditioning typically operates from 7am–6pm Monday to Friday
- After-hours air conditioning (AHAC) is available upon request
- Supplementary units however are not base building and should be maintained by the tenant

Condenser water allocation

- 15 W/sqm
- 1.72 L/s per floor

Fire protection

- Smoke detection, automatic sprinklers and EWIS
- 2 hose reels per floor

Lifts

- 4 lifts with destination control from Ground Floor including one lift that is used as a passenger/goods lift

Electrical capacity (amps/floor)

- 3 phase 400A

Backup power

- Generator for base building essential services
- Ability for tenant to install their own generator[^]

Access control system

- Syrus and Presco Proximity Readers
- Evolution Management System

Ceiling heights

- Floor to ceiling – 2,700mm
- Slab to slab – 3,300mm

Fibre providers

- Telstra, Optus, Fibrenet, Vocus
- NBN ready
- MTAV available

Parking

- 1:20sqm

[^]Subject to Stockland approvals.



Technical specifications 2 Victoria Avenue

Building hours

- Monday–Friday, 7am–6pm
- Tenant access is available 24/7

Air conditioning

- Air conditioning typically operates from 7am–6pm Monday to Friday
- After-hours air conditioning (AHAC) is available upon request
- Supplementary units however are not base building and should be maintained by the tenant

Condenser water allocation

- 41.6 W/sqm
- 2.5 L/s per floor

Fire protection

- Smoke detection, automatic sprinklers and EWIS
- 2 hose reels per floor

Lifts

- 3 lifts with destination control from Ground Floor including one lift that is used as a passenger/goods lift

Electrical capacity (amps/floor)

- 400A

Backup power

- Emergency & Exist lighting test switch, self contained

Access control system

- Syrus and Presco Proximity Readers
- Evolution Management System

Ceiling heights

- Floor to ceiling – 2,700mm
- Slab to slab – 3,300mm

Fibre providers

- Telstra, Optus, Fibrenet, Vocus
- NBN ready
- MTAV available

Parking

- 1:80sqm

^Subject to Stockland approvals.



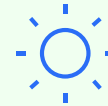
Your partner



Australia's largest diversified property company with more than 70 years' experience



Best-in-class delivery systems and processes for efficiency and innovation



Solar investment of over 14MW across Commercial Property portfolio



High tenant engagement with 87% overall customer satisfaction with Stockland in Workplace & Logistics†



Owner, developer and manager of over \$13.8 billion[^] of assets in Australia



Minimum commitment of 4 star Green Star and NABERS in commercial property CP developments



Proven track record of successful and long-term capital partnering



Workplace & Logistics development pipeline of ~\$12.2 billion*#

Global recognition of sustainability leadership

Global Top 5 ranking on S&P Global Dow Jones Sustainability Index for 12 consecutive years

Member of
Dow Jones Sustainability Indices
Powered by the S&P Global CSA

GRESB Green Star rating for 9 years



AAA ESG Rating from MSCI for over 10 years



Employer of Choice for Gender Equality Australia's Workplace Gender Equality Agency



To find out more about Stockland, please visit our website - stockland.com.au

[^]Net Funds Employed (NFE). Excludes WIP and sundry properties of \$0.5bn and asset held by the Corporation Stockland Harrisdale, WA. Includes NFE of: Masterplanned Communities \$2.3bn, Land Lease Communities \$0.5bn and other assets \$0.3bn.
*Forecast end value on completion. #Includes M_Park Stage 1, owned in capital partnership with Ivanhoe Cambridge, at 100% share. Correct as at 31 December 2022. †As at 31 December 2022. Stated overall customer satisfaction measuring 7-10 score.

For leasing enquiries:

Senior Asset Manager – Workplace

Oliver Taylor

M: 0420 981 433

E: oliver.taylor@stockland.com.au

stockland.com.au/workplace/wa/durack-centre



Director

James Phelan

M: 0410 970 354

E: james.phelan@cbre.com.au

Director

Colin Gilchrist

M: 0410 336 241

E: colin.gilchrist@cbre.com.au



Director, Head of Leasing

Roly Egerton-Warburton

M: 0420 959 145

E: roly.ew@cushwake.com

Associate Director

Joey Johns

M: 0481 129 829

E: joey.johns@cushwake.com



Scan for website

While every endeavour has been made to ensure the accuracy of the information contained in this document, Stockland Corporation Limited and its related entities (Stockland) give no warranty, guarantee or representation that the information provided is complete, accurate, up to date or suitable for your particular use or transaction. Stockland will not be liable for any loss, damage, cost or expense (whether direct or indirect) incurred by you as a result of your use of, or reliance on, or interpretation of the information provided in this document. You should seek legal or other professional advice in relation to the information contained in this document. December 2023.