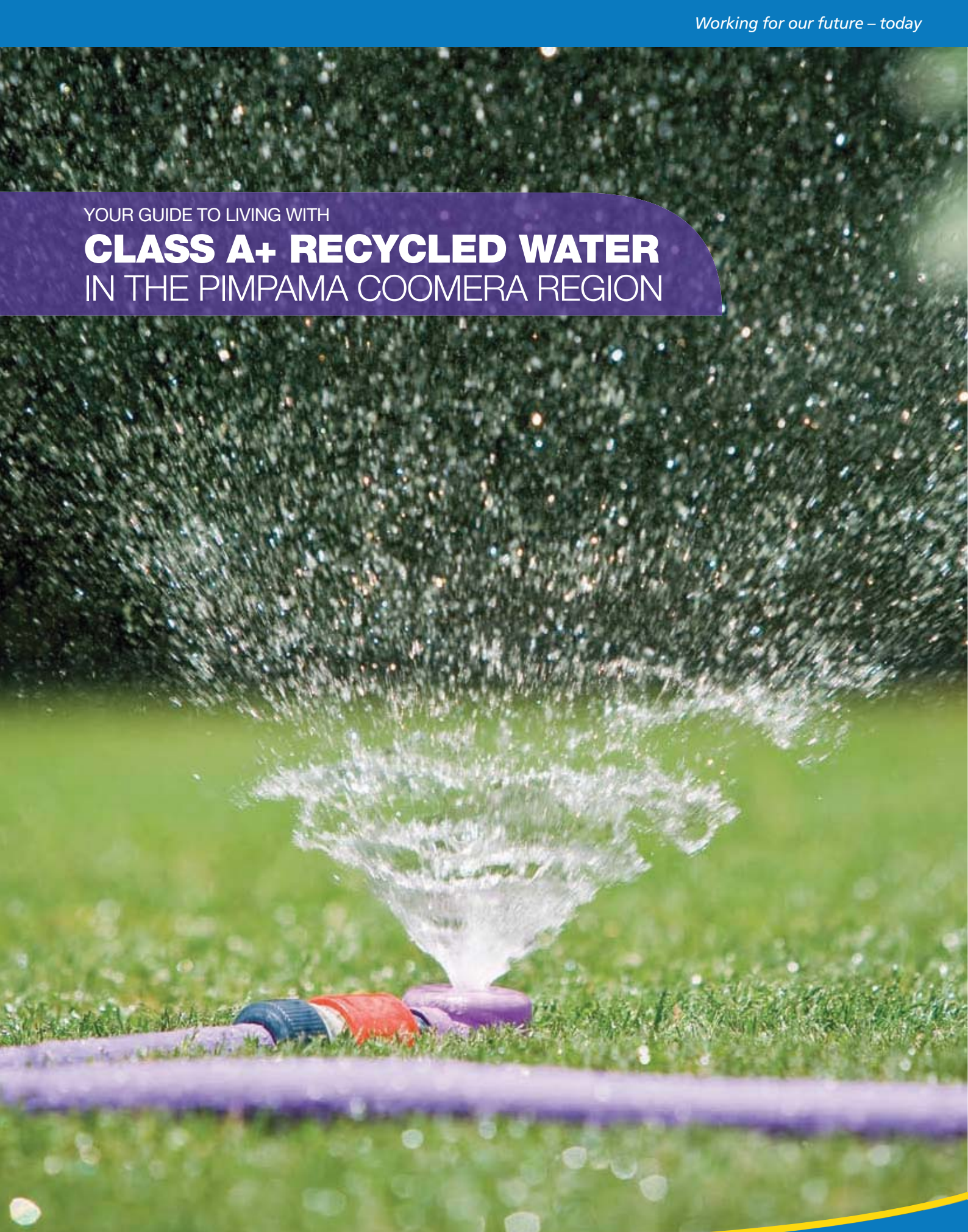


YOUR GUIDE TO LIVING WITH

CLASS A+ RECYCLED WATER IN THE PIMPAMA COOMERA REGION



GoldCoastWater



Gold Coast City Council



WELCOME, YOU ARE NOW PART OF THE MOST INNOVATIVE WATER PROJECT IN QUEENSLAND.

The Pimpama Coomera region is emerging as the premier residential location in the Gold Coast's rapidly growing northern reaches.

When you choose to live in the Pimpama Coomera region, you become part of a community at the pinnacle of sustainable urban development.

The Gold Coast City Council, through the Pimpama Coomera Waterfuture (PCWF) Master Plan is providing the region with one of the largest and most innovative water projects in Queensland. The PCWF Master Plan aims to create a sustainable water future for the Pimpama Coomera community by taking a holistic approach to water cycle management.

The PCWF Master Plan will see the entire community capture, use and re-use water in innovative ways and create efficiencies in all aspects of the urban water cycle by reducing drinking water use, capturing rainfall, managing stormwater and wastewater and maximising the use of Class A+ recycled water.

Class A+ recycled water is supplied to dual reticulated homes in the Pimpama Coomera region through a separate water network. This network will provide residents with the ability to use recycled water for flushing toilets, watering gardens and washing cars whenever they choose.

CLASS A+ RECYCLED WATER IN PIMPAMA COOMERA

All new homes and businesses in the Pimpama Coomera region have two separate pipe networks supplying their water. This means they are connected to both the potable (drinking) water network and the new Class A+ recycled water network. For easy identification, the entire Class A+ recycled water network is coloured purple including water mains, meters, pipes, taps and hoses.

Class A+ recycled water will be available to the Pimpama Coomera community from 2009 and is Queensland's highest quality recycled water not intended for drinking purposes. The cost of Class A+ recycled water is significantly lower than drinking water, allowing residents and businesses to save on water bills. For the latest pricing information contact Gold Coast Water on 1300 366 692.

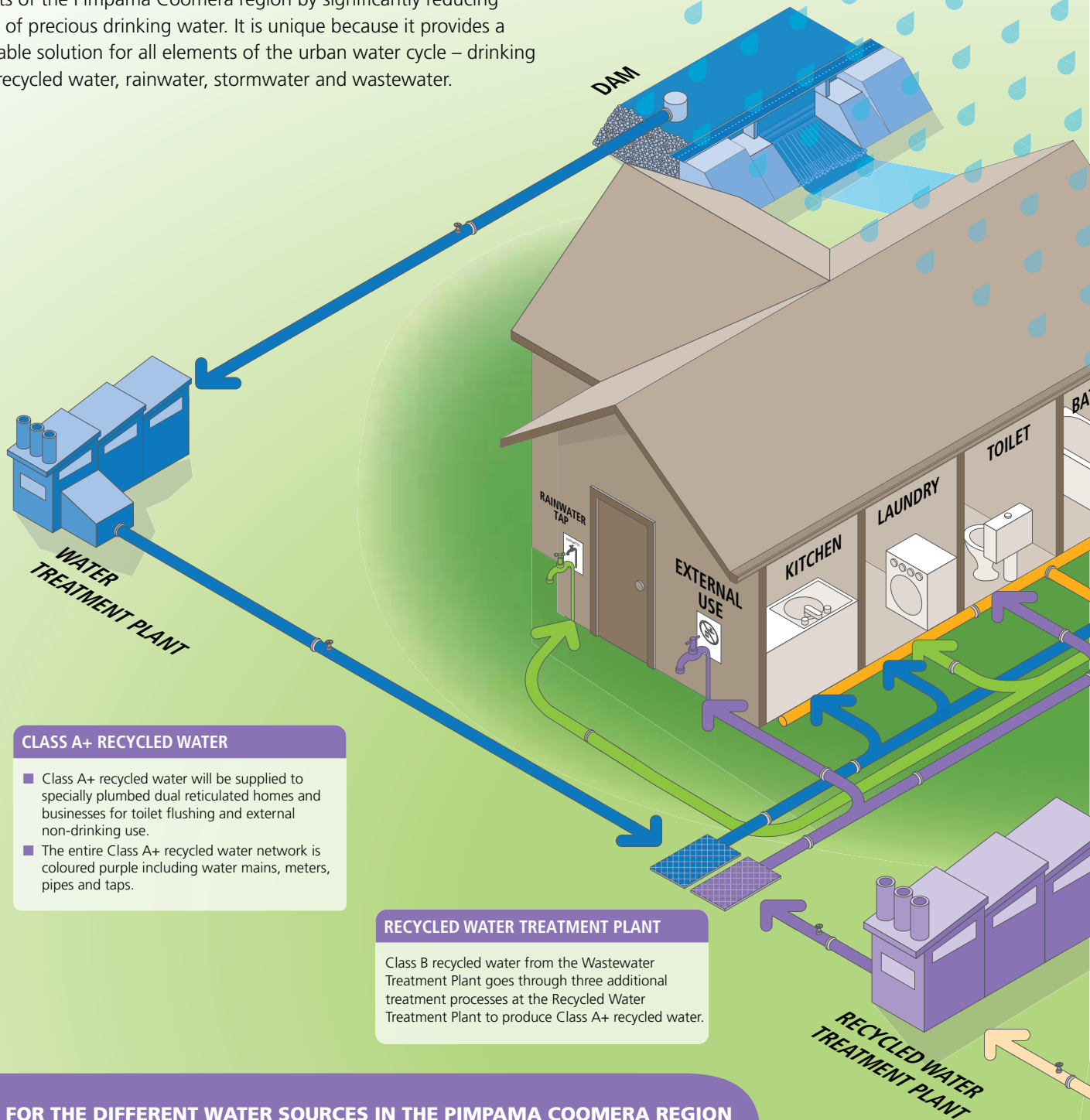
CLASS A+ RECYCLED WATER:

CAN BE USED FOR:	SHOULD NOT BE USED FOR:
<ul style="list-style-type: none">✓ Toilet flushing✓ Gardens and lawns✓ Filling ornamental ponds✓ Car washing✓ Fire fighting✓ Construction and building purposes✓ Dust suppression✓ Irrigation of fruit and vegetables (should be rinsed in drinking water before consumption)✓ External household cleaning	<ul style="list-style-type: none">✗ Drinking✗ Cooking or other kitchen purposes✗ Personal washing such as baths, showers, bidets or hand basins✗ Domestic evaporative coolers✗ Clothes washing✗ Swimming pools and spas✗ Recreation, such as water toys and playing under sprinklers✗ A water source for pets or livestock✗ Filling rainwater tanks and other storages



LIVING WITH MULTIPLE WATER SOURCES

The PCWF Master Plan aims to secure a sustainable water future for residents of the Pimpama Coomera region by significantly reducing the use of precious drinking water. It is unique because it provides a sustainable solution for all elements of the urban water cycle – drinking water, recycled water, rainwater, stormwater and wastewater.



CLASS A+ RECYCLED WATER

- Class A+ recycled water will be supplied to specially plumbed dual reticulated homes and businesses for toilet flushing and external non-drinking use.
- The entire Class A+ recycled water network is coloured purple including water mains, meters, pipes and taps.

RECYCLED WATER TREATMENT PLANT

Class B recycled water from the Wastewater Treatment Plant goes through three additional treatment processes at the Recycled Water Treatment Plant to produce Class A+ recycled water.

USES FOR THE DIFFERENT WATER SOURCES IN THE PIMPAMA COOMERA REGION

	DRINKING WATER	RAINWATER FROM TANKS	CLASS A+ RECYCLED WATER*
Kitchen	✓		
Bathroom	✓		
Toilet			✓
Laundry - sink	✓		
Laundry - washing machine		✓ (cold water tap only)	
Hot water system	✓		
Back-up supply in rainwater tanks	✓		
Outdoor taps (including irrigation systems)	optional	✓	✓ (minimum of two)

* Class A+ recycled water is the highest quality recycled water in Queensland not intended for drinking purposes.

EVAPORATION

KEY

- DRINKING WATER
- RAINWATER
- WASTEWATER
- TREATED WASTEWATER (CLASS B)
- RECYCLED WATER (CLASS A+)
- STORMWATER MANAGEMENT (WSUD)

DRINKING WATER

- Drinking water will be used in kitchens, bathrooms, laundries and to 'top up' rainwater tanks.
- Normal drinking water use levels are expected to be significantly lower than the average Queensland household.

RAINWATER TANKS

Rainwater tanks can save each home up to 75,000 litres of drinking water per year!

MANDATORY RAINWATER TANK SIZES:

Detached/freestanding home	5,000 litres
Attached duplexes, townhouses or units	3,000 litres

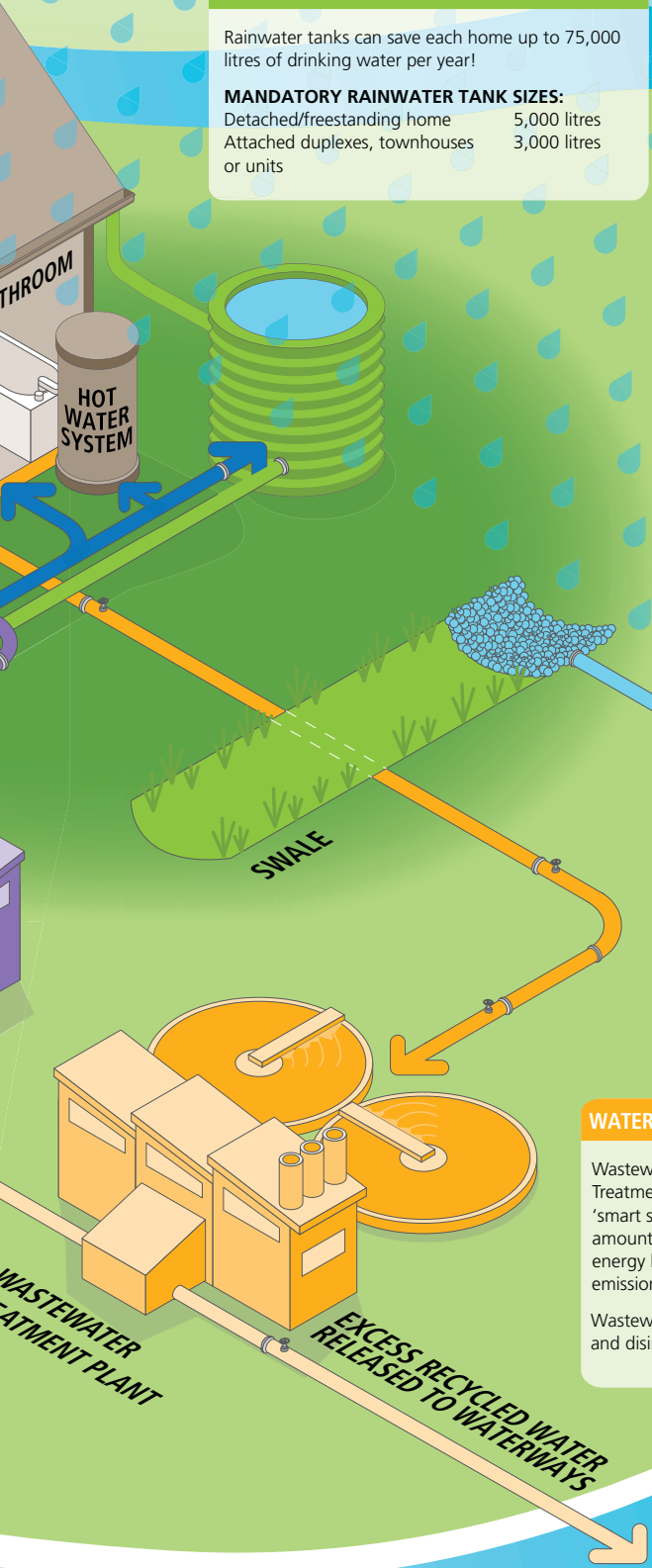
STORMWATER MANAGEMENT - WATER SENSITIVE URBAN DESIGN

The 7,000 hectare Pimpama Coomera region boasts a green, environmental feel as traditional concrete guttering is replaced with Water Sensitive Urban Design (WSUD). WSUD incorporates a variety of initiatives to assist in the collection and management of stormwater run-off in an efficient, cost effective and environmentally friendly way, including:

- rainwater tanks
- wetlands and ponds
- swales

Swales are 'v' shaped ditches used instead of traditional gutters or kerbs. These are being applied to many parts of the Master Plan region to help slow the flow and filter silt and other debris from stormwater.

WSUD can make your neighbourhood an attractive place to live; residents need to be aware of the proper ways to care for specific WSUD elements. For example, swales should not be driven through as this may damage them and decrease their effectiveness.

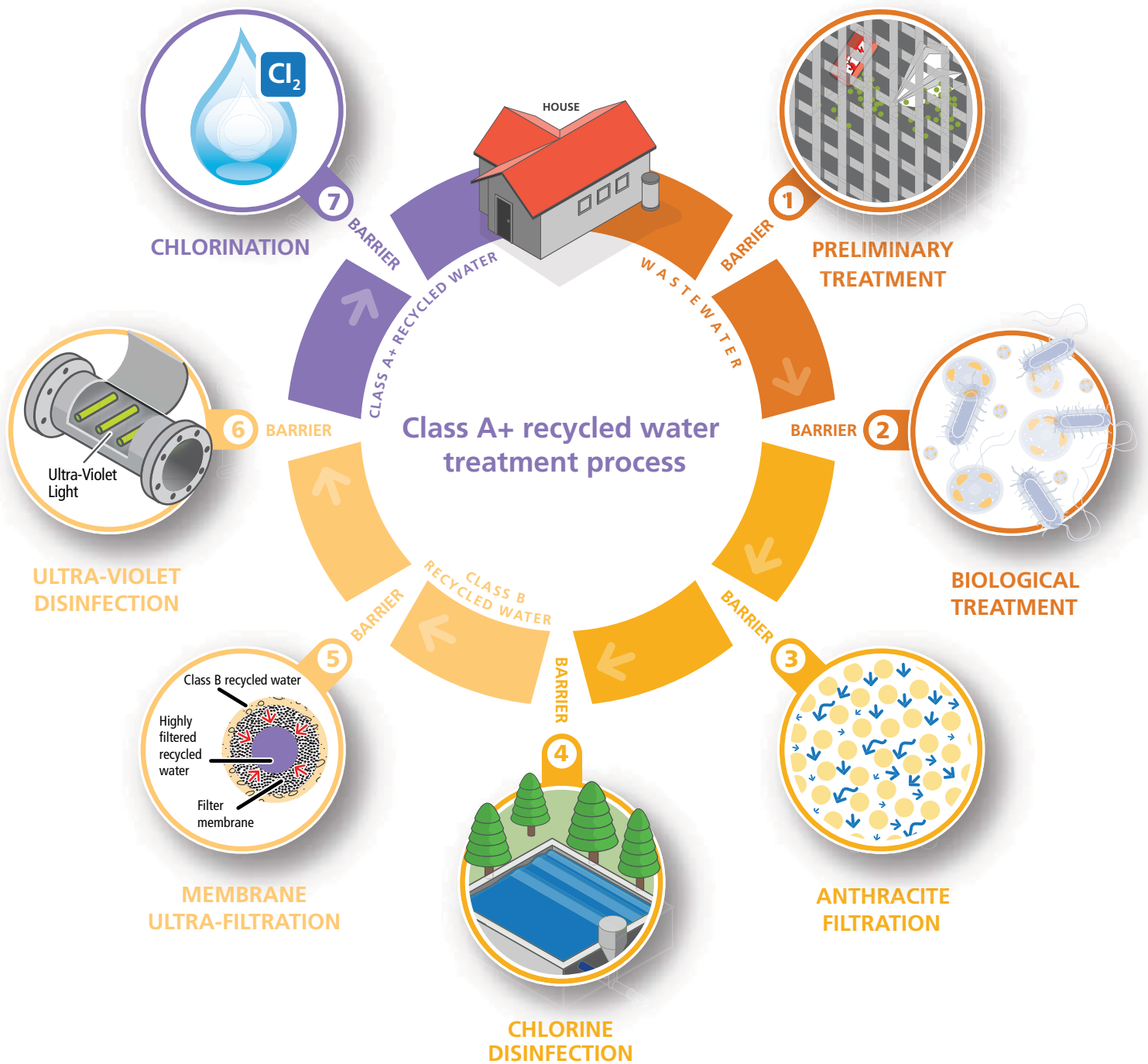


WASTEWATER NETWORK AND WASTEWATER TREATMENT PLANT

Wastewater will travel from properties in the region to the Wastewater Treatment Plant in Pimpama. The wastewater network is designed as a 'smart sewer' system. An improved wastewater system will minimise the amount of stormwater entering the wastewater network, reducing the energy levels required to treat wastewater, meaning fewer greenhouse gas emissions.

Wastewater is treated through a series of physical, biological, chemical and disinfection processes at all Gold Coast Wastewater Treatment Plants.

HOW CLASS A+ RECYCLED WATER IS PRODUCED



Rigorous treatment, monitoring, testing and quality assurance systems have been put in place to ensure Class A+ recycled water meets environmental and health guidelines.

Wastewater from the community is treated at the Pimpama Wastewater Treatment Plant through a series of processes including preliminary treatment, biological nutrient removal, anthracite filtration and disinfection. At this stage the water is classified as Class B recycled water.

The water then undergoes further treatment at the Pimpama Recycled Water Treatment Plant, which includes ultra-filtration, ultra-violet disinfection and chlorination.

These processes will see the water treated and disinfected to a Class A+ recycled water standard before it is delivered to dual-reticulated homes and businesses in the Pimpama Coomera region.



HOW TO CHECK YOUR CLASS A+ RECYCLED WATER PLUMBING

Gold Coast City Council has conducted plumbing inspections during the construction of all dual reticulated homes and businesses

You may like to conduct your own test for your peace of mind to ensure that none of your taps or appliances are connected to recycled water incorrectly. The following information is advisory only - if you are unsure about any plumbing, please call a licensed plumber.

THE ESSENTIAL 7 STEP CHECK FOR DUAL RETICULATED PROPERTIES

1. Turn off drinking water supply at the property boundary and rainwater tank pump and/or valve.
2. Turn on all internal taps. Taps should run dry.
3. Flush all toilets. Toilets should refill if connected to recycled water supply.
4. Turn on external taps. Any external potable water taps should run dry. Taps continuing to run are connected to recycled water supply and should be coloured purple and marked with appropriate signs.
5. Turn off recycled water supply and turn on drinking water supply and rainwater tank pump and/or valve. Run recycled water supply dry via external taps or toilet flushing.
6. Turn on internal appliances. Appliances that do not fill are connected to incorrect supply.
7. Turn on recycled water supply. Slowly turn on tap connected to recycled water supply that is located furthest from meter. This will purge all air from the pipeline while it is being recharged.

For more information on this process or to report an incorrect connection, contact the Customer Contact Centre on **1300 366 692**.



WATER SAVING IN PIMPAMA COOMERA

From the bathroom to the backyard, there are some simple things you can do to reduce your water bill and save thousands of litres of water each year.

WATER SAVING TIPS FOR YOUR HOME

Bathroom

- Reduce your shower time to 4 minutes. Even an efficient running shower can use 9 litres per minute.
- Don't let the tap run when brushing your teeth or shaving. This will save up to 8 litres per minute.

Kitchen Tips

- Half fill the sink to rinse dishes or clean fruit and vegetables.
- A water efficient dishwasher uses less water than washing your dishes in the sink.
- Wait until you have a full load before turning on the dishwasher and use a water saving setting. This will conserve 10-30 litres for every load saved.
- When buying a dishwasher, choose a water efficient model and look for the water efficient labelling.
- Install flow controlled aerators. You could save more than 6 litres per minute.

Laundry

- If you buy a new washing machine, choose a water efficient front-loading model with a minimum '4 Star' rating. This will save up to 50 litres every wash.
- Make sure each cycle is a full load, or adjust the water level to suit the size of the load. This will save up to 10 litres each wash.

Outdoors

- Use a broom to sweep paved outdoor areas instead of hosing them down.
- Always use a trigger hose, bucket or watering can when washing your car or watering the garden.
- Wash the car on the lawn – the lawn will get a good watering at the same time.

For more information on the international award winning Pimpama Coomera Waterfuture Master Plan, please visit www.goldcoastwater.com.au/pimpamacoomera



The cover stock is Onyx 300gsm and is a 70% recycled stock. The recycled break-up is 30% pre-consumer and 40% post-consumer recycled and the balance of the pulp is ECF fibre from certified well managed forests. The text stock is Onyx 170gsm and is a 100% recycled stock. The recycled break-up is 60% pre-consumer and 40% post-consumer. Both stocks are Australian made and manufactured at Shoalhaven Paper an ISO 14001 accredited mill.