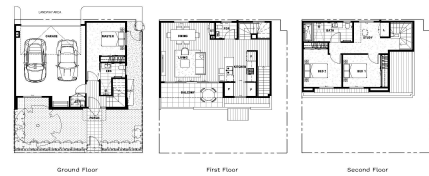


For Sale



Lot 1201

Stockland | Haven

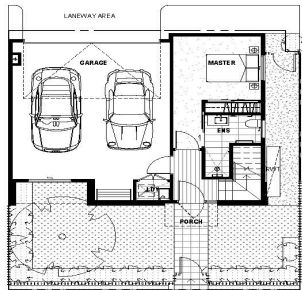


Riley

- Ground Floor: 288 sqft
- First Floor: 288 sqft
- Second Floor: 288 sqft
- Roof Area: 1.1 sqft
- Storage Area: 43 sqft
- Front Area: 2 sqft
- Total House Area: 867 sqft**
- Total Lot Area: 937 sqft**



Lot 1201



Ground Floor



First Floor



Second Floor



The document is regulated solely for the purpose of providing an indicative floor plan and facade of the residential lot within the proposed development called Haven and is not intended to be used for any other purpose. The contents of the document are based on information available to Stockland at the time of creation (June 2022). Unless otherwise specified, dimensions for external or non-party walls are taken from the outside face of such walls, and dimensions for party walls are taken from the mid-line of such walls. All dimensions and areas are approximate. Colors, textures, decorative items and plants are shown for indicative purposes only and are not included in the sale. The contract for sale should be reviewed in relation to the dimensions, areas, site inclusions and specifications. Stockland reserves the right to make changes, without notice, to the information contained in this document at any time prior to you entering into a contract for sale with Stockland. If this document is included in a contract for sale, Stockland reserves the right to make changes to the information contained in this document in accordance with the terms of the contract for sale. Information and images in relation to landscaping are indicative only and may show plantings which may not be mature at settlement. Not liability is accepted for any loss or damage arising from the improper use or reliance on this document or its contents.



Riley



Ground Floor	28 m ²
First Floor	58 m ²
Second Floor	51 m ²
Balcony Area	11 m ²
Garage Area	43 m ²
Porch Area	2 m ²
Total House Area	193 m²
Total Lot Area	127 m²

