

04 APRIL 2022

Subject M_Park Building B Tower Crane (TC2) erection
Project M_Park Building B

Dear Neighbour,

This is a courtesy letter to inform you that Hutchinson Builders will be erecting the second (TC2) of two luffing tower cranes commencing Friday 8th April and continuing through to completion on Saturday 9th April 2022.

The tower crane will be commissioned on Monday 11th April 2022 and commence operation thereafter for a period of approximately eight months.

All tower crane erection activities will be contained wholly within the M_Park Building B site and will have no impact to your premise.

The tower crane is fitted with a zoning device which limits the operation and slewing to within the site the site boundary's.

The erection is weather pending and the 20th to 22nd of April is scheduled as backup.

If you have any queries or wish to know more about the tower cranes, please contact the undersigned.

FRANK ROGERS

Senior Project Manager T 02 8344 2400 | M 0407 240 274

HUTCHINSON BUILDERS | Established 1912

J Hutchinson Pty Ltd
ABN 52 009 778 330

Telephone 1300 HUTCHIES

Address

Postal Locked Bag 3002, Toowong DC QLD 4066 Australia

Email info@hutchinsonbuilders.com.au

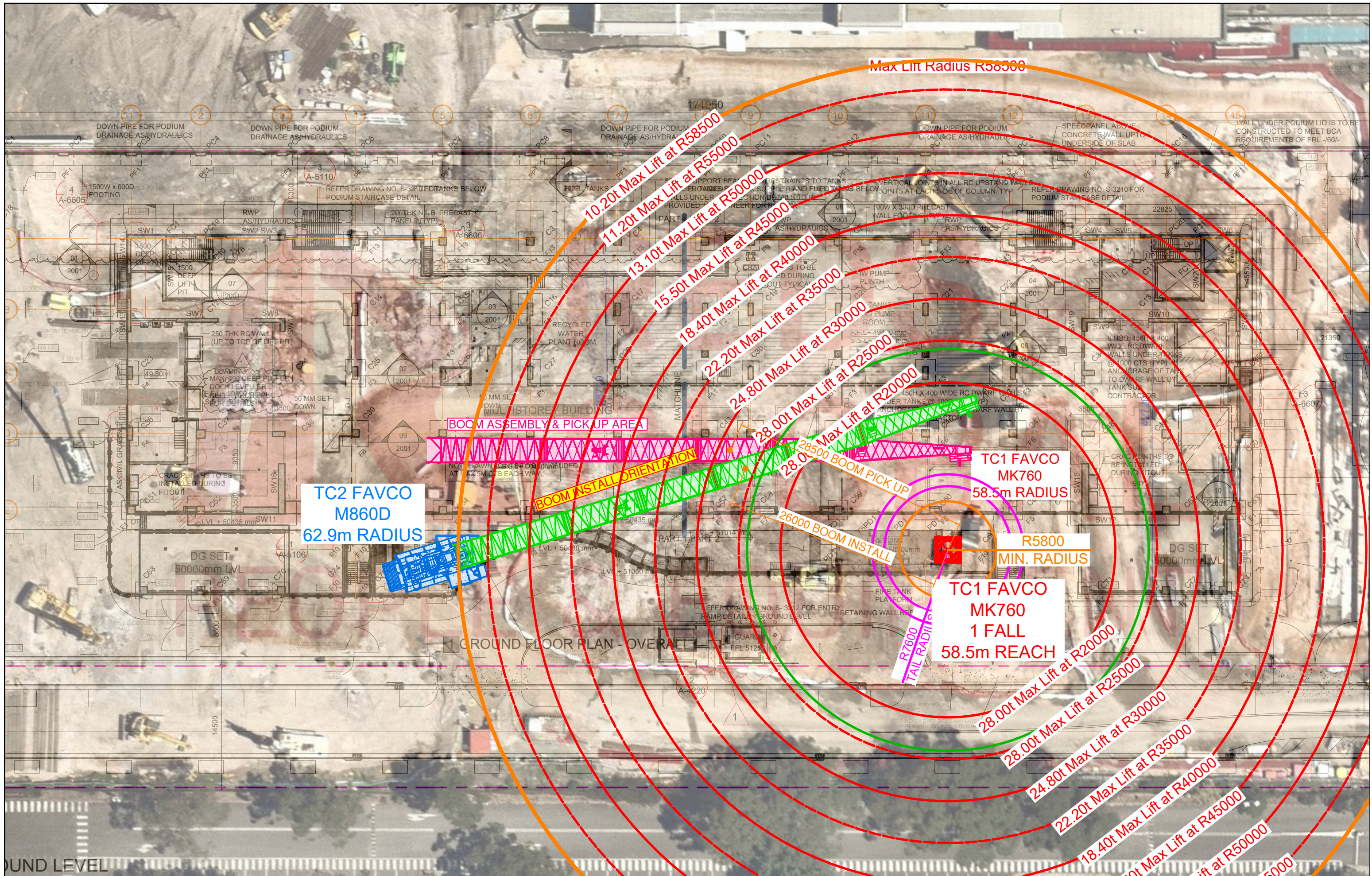
USA Associated Company



Address 12600 Lawson Road, Little Rock AK 72210 USA
Telephone +1 (501) 225 7606
Fax +1 (501) 225 1028
www.kincoconstructors.com



HUTCHIES.COM.AU



**TC2 FAVCO
M860D
62.9m RADIUS**

**TC1 FAVCO
MK760
58.5m RADIUS**

**TC1 FAVCO
MK760
1 FALL
58.5m REACH**

REDS GLOBAL
PEOPLE & EQUIPMENT

CRANE	MODEL	BOOM	CAPACITY	TOWERS	HUH
TC1	FAVCO MK760L	59.6m	1 FALL	11 x 864 + 2 x 763	N/A
TC2	FAVCO M860DX	64.2m	1 FALL	2 x 763R + 10 x 763	N/A

Project	HUTCHIES SYD 66 ATHENA 31 - 39 TALAVERA RD MACQUARIE PARK, NSW	Title	TC2 INSTALL METHODOLOGY BOOM INSTALL ORIENTATION
Project Number	HUT SYD 66 TC2	Drawing Number	SK1012
Issue	1	Issue	1

ISSUE	Date	Description	By	Chk	Drawn By	Checked By	Approved By	NORTH
1	24/02/22	ISSUED FOR INFORMATION	CD					

**METHODOLOGY
FOR INSTALL PURPOSES**
DO NOT SCALE DRAWINGS. IF IN DOUBT ASK!