

# Evergreen Townhomes







Image is an artist's impression. Subject to change.

# Discover townhomes at Evergreen

Evergreen's modern townhomes in Clyde are designed with quality and value in mind, and are centrally located to parks and schools. Working closely with some of Victoria's best builders, Evergreen offers a range of 2, 3 and 4 bedroom townhomes to suit all lifestyles and budgets.

Come home to Evergreen, a masterplanned community positioned perfectly in the heart of Clyde. Evergreen will become a well-connected destination for the entire family to enjoy, with future schools, shops, parks and community facilities planned.

Located on Pattersons Road you're just a short drive to the heart of Cranbourne where you will find a range of amenities for the whole family to enjoy. Living at Evergreen also means being just 40 minutes away from the Mornington Peninsula where there are wineries, beaches and hiking tracks waiting for you to explore.





# Where easy living meets contemporary design

A townhome puts the choice in your hands, with a range of options available to suit your lifestyle. There's 2, 3 and 4 bedroom designs, traditional or reverse living floorplans and stylish interiors for the every day.







# 5 reasons to consider townhome living

Building your dream home in the heart of a sought-after community might seem out of reach – but it doesn’t have to be. Read on to find out why you should consider townhome living.

## 1. Low-maintenance lifestyle

Well-designed townhomes make the most of space with expertly crafted, spacious and functional floorplans that provide connectivity and comfort. Complementing the home is a low-maintenance and modern-design outdoor space, giving you more time to do what you love.

## 2. Unique affordability

Townhomes provide a more cost-effective solution to purchasing property, including extra costs usually associated with new home builds, like fencing, landscaping and finishes, part of the fixed price. There are packages that appeal to first-home buyers, empty nesters, families and investors alike – and they may be more affordable than you think.

## 3. Stylish design and fantastic finishes

Speaking of finishes, there is an eclectic mix of premium inclusions provided as standard with every build, allowing you to enjoy your new home from day one. Architecturally designed floorplans maximise natural light and provide a layout with liveability top of mind, giving you enough space for any activity.

## 4. Ease and simplicity

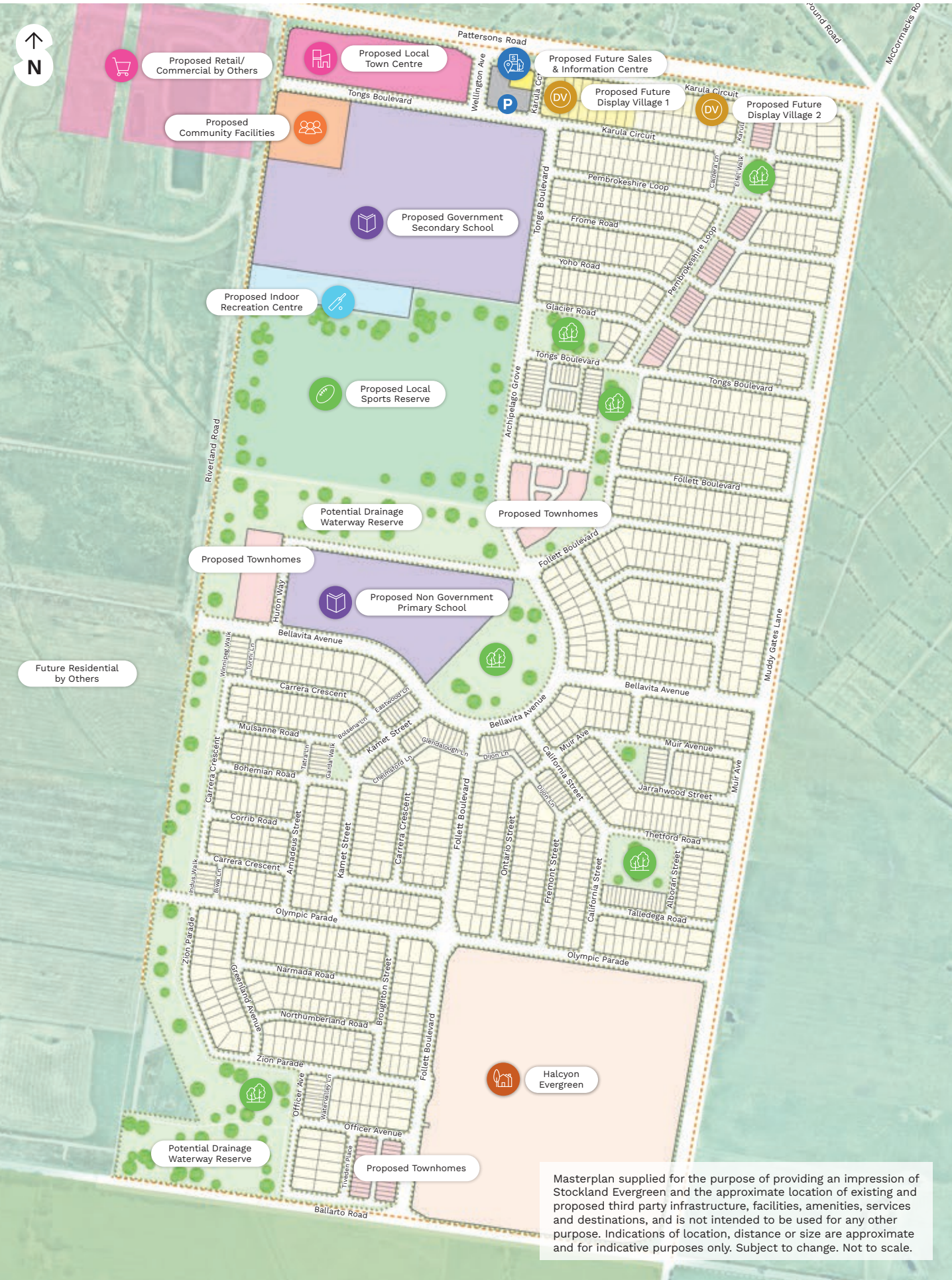
Buying a turn-key townhome package means that you are purchasing a complete package with all design choices made for you, making it as stress-free as possible. The only thing you need to consider are colour schemes and where to position your furniture. You can’t go wrong!

## 5. Trusted professionals

With more than 70 years of experience, Stockland has established itself as the industry leader in creating vibrant and liveable communities. Partnering with some of Victoria’s most respected and awarded builders to deliver high-quality townhomes means you can trust your new home is in safe hands.







# Prime position in Evergreen

Evergreen’s townhomes are centrally located within the heart of our masterplanned community in Clyde.

The future is bright at Evergreen. Our community is perfectly positioned in Melbourne’s south-east with connections to the nearby Cranbourne area, major freeways, green open spaces and great schools nearby.

Working closely with some of Victoria’s best builders, Evergreen offers a range of townhomes to suit all lifestyles.











# Simplifying the buying process

We will guide you through our easy-to-understand purchaser process so you can start dreaming of moving into your new townhome with no hidden surprises.



## Choose your townhome and pay your deposit

Choose your townhome with the design that best suits your needs, with help from our Sales Professionals and builder partners. They'll take you through such things as:

- floor plans
- specifications and inclusions
- colour schemes
- external facades.

Once you've chosen your townhome, you will need to provide a deposit when you sign your contract.



## While your townhome is being built

Our builder partners will provide you with regular updates on the construction of your townhome and will be available to answer any questions you have during this exciting journey. They will also make an appointment for you to inspect your townhome shortly before settlement. Your Stockland Sales Professional is also always on hand to help with any questions along the journey.



## The settlement process

The type of townhome contract you have will determine the settlement process. Speak to your Builder's Sales Representative, or your Stockland Sales Professional for more details on settlement.



## Moving into your new townhome

On the day of settlement, you will be welcomed to your brand-new townhome and given your keys. After you move in, we will continue to answer any questions and assist where possible as you settle in.





Ask about  
our available  
packages



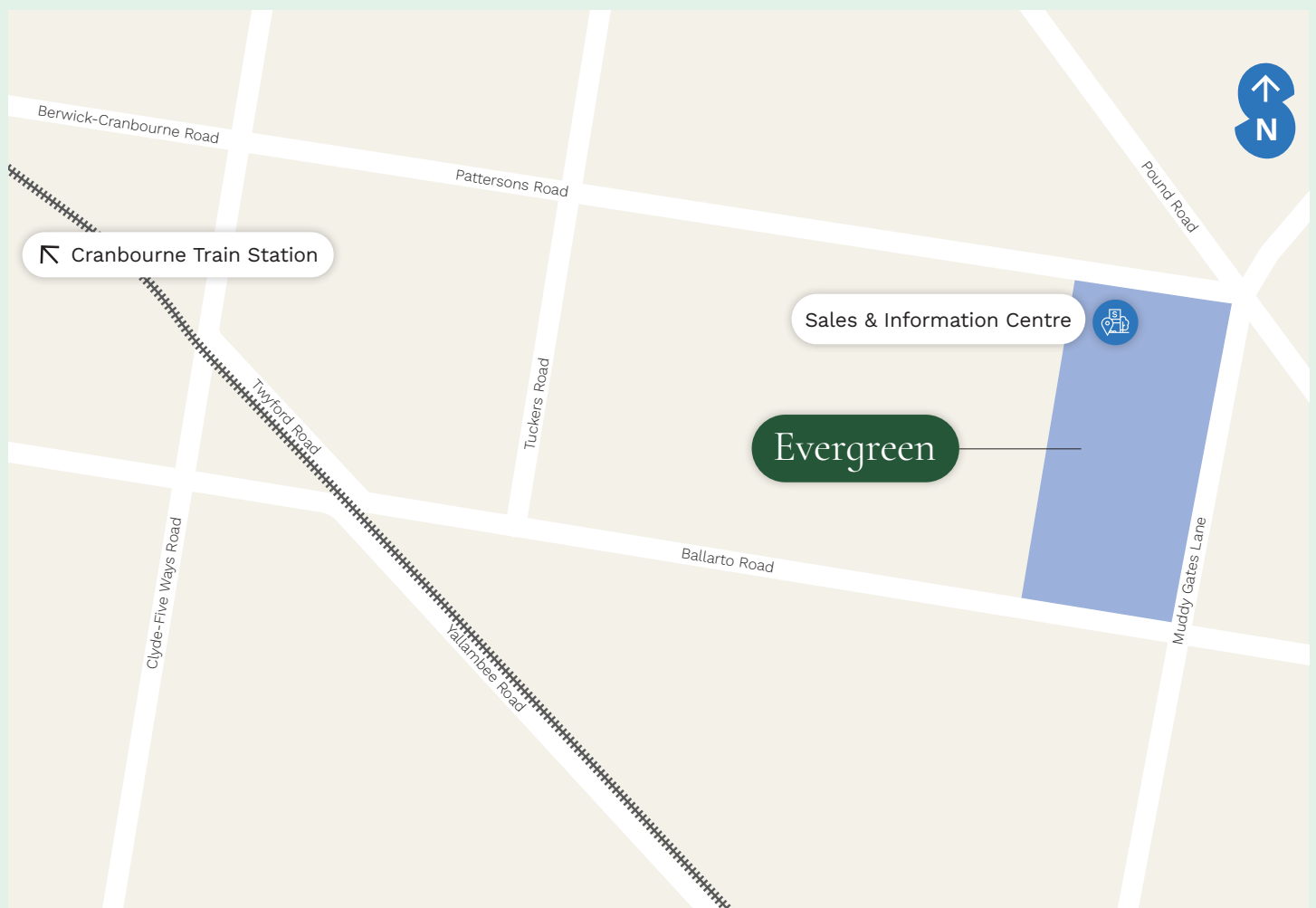
## Evergreen Sales & Information Centre

460S Pattersons Road

Clyde Vic 3978

P: 13 52 63

[stockland.com.au/evergreen](https://stockland.com.au/evergreen)



Scan for website

This document is supplied for the purpose of providing an impression of Stockland's Evergreen community and the approximate location of existing and proposed third party infrastructure, facilities, amenities, services and destinations, and is not intended to be used for any other purpose. The use of the term "furniture" in this brochure includes, but is not limited to, indoor and outdoor furniture, decorative items, indoor and outdoor pot plants, fridge, rugs and wall shelving. All details, images and statements are based on the intention of, and information available to, Stockland as at the time of publication (January 2024) and may change due to future circumstances. This document is not legally binding on Stockland. Stockland does not give any warranty in relation to any information contained in this document. Stockland does not accept any liability for loss or damage arising as a result of any reliance on this document or its contents. For more information on the townhome products at Evergreen, call 13 52 63 or visit the Evergreen Sales & Information Centre.