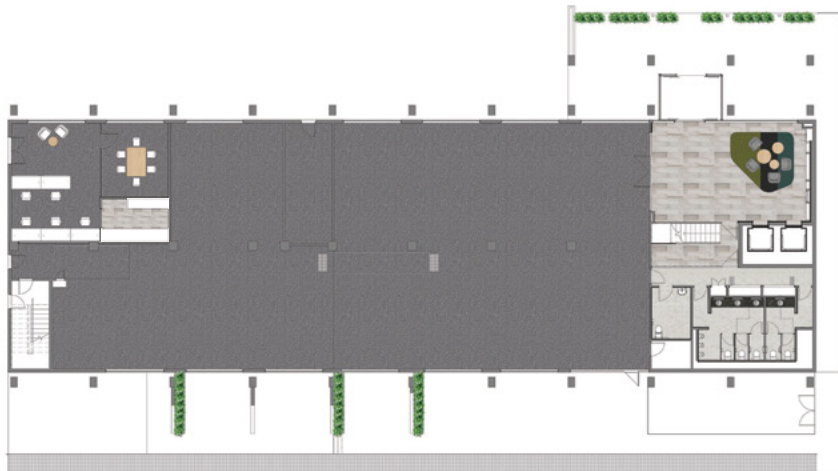


Floor Plans

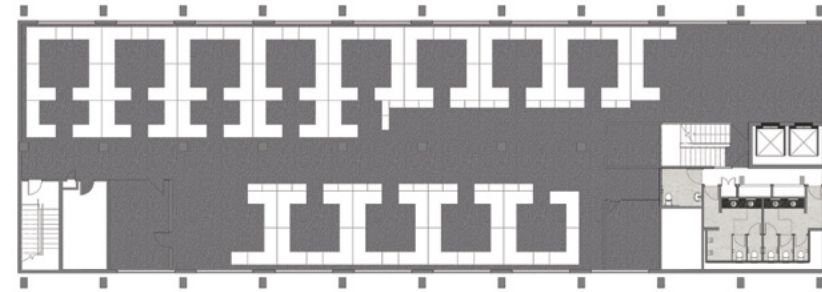
350 Wellington Road

Ground Level - Tenancy	482m ²
Ground Level - Stockland Office	76m ²
Level 1 (inclusive of ramps)	639m ²
Level 2	596m ²
Level 3 (inclusive of proposed lift)	639m ²
Level 4 (inclusive of proposed lift)	248m ²
TOTAL	2680m²

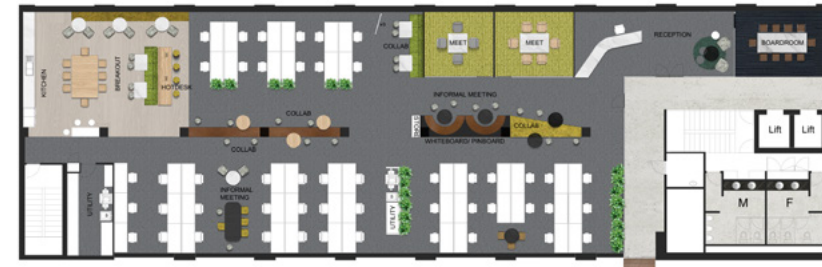
*Subject to survey on completion of refurbishment.



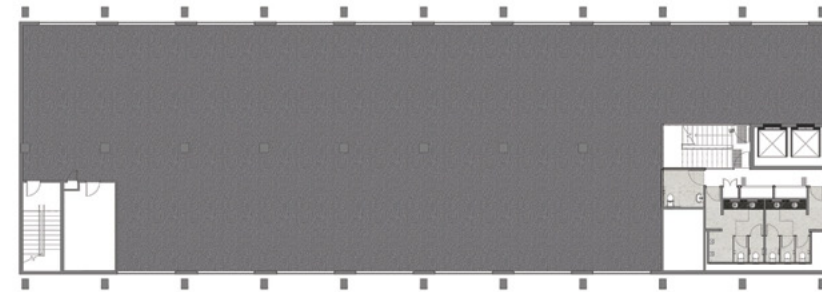
Ground Level - 482m² (NLA)



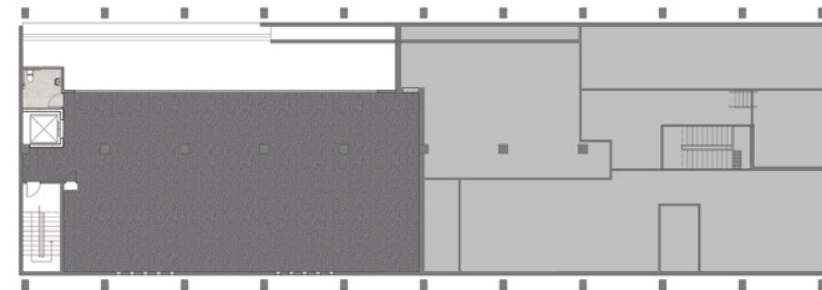
Level 1 - 639m² (NLA)



Level 2 - 596m² (NLA)



Level 3 - 639m² (NLA)



Level 4 - 248m² (NLA)

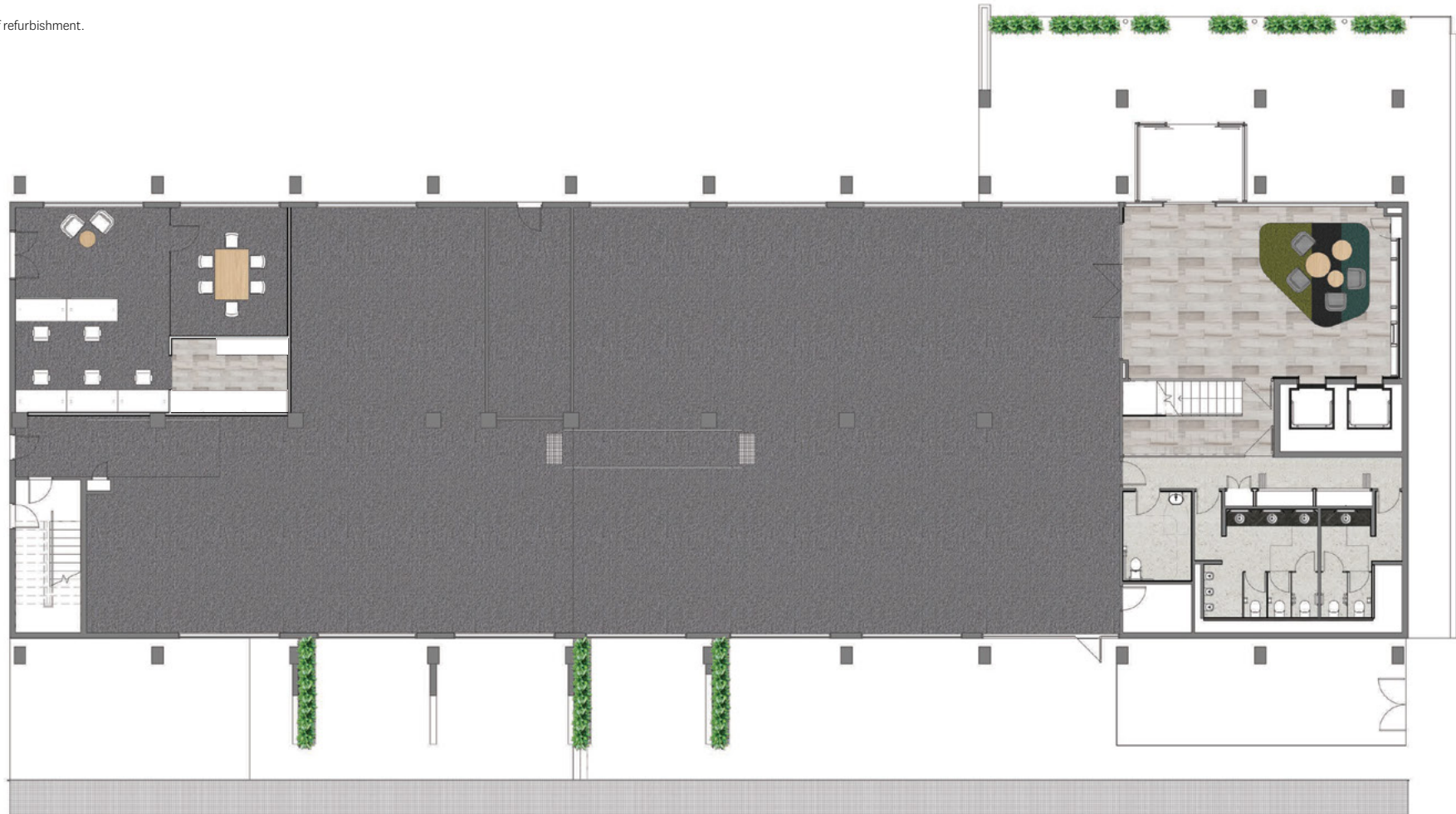
Floor Plans

350 Wellington Road

Ground Level - Tenancy 482m²

Ground Level - Stockland Office 76m²

*Subject to survey on completion of refurbishment.



Ground Level - 482m² (NLA)

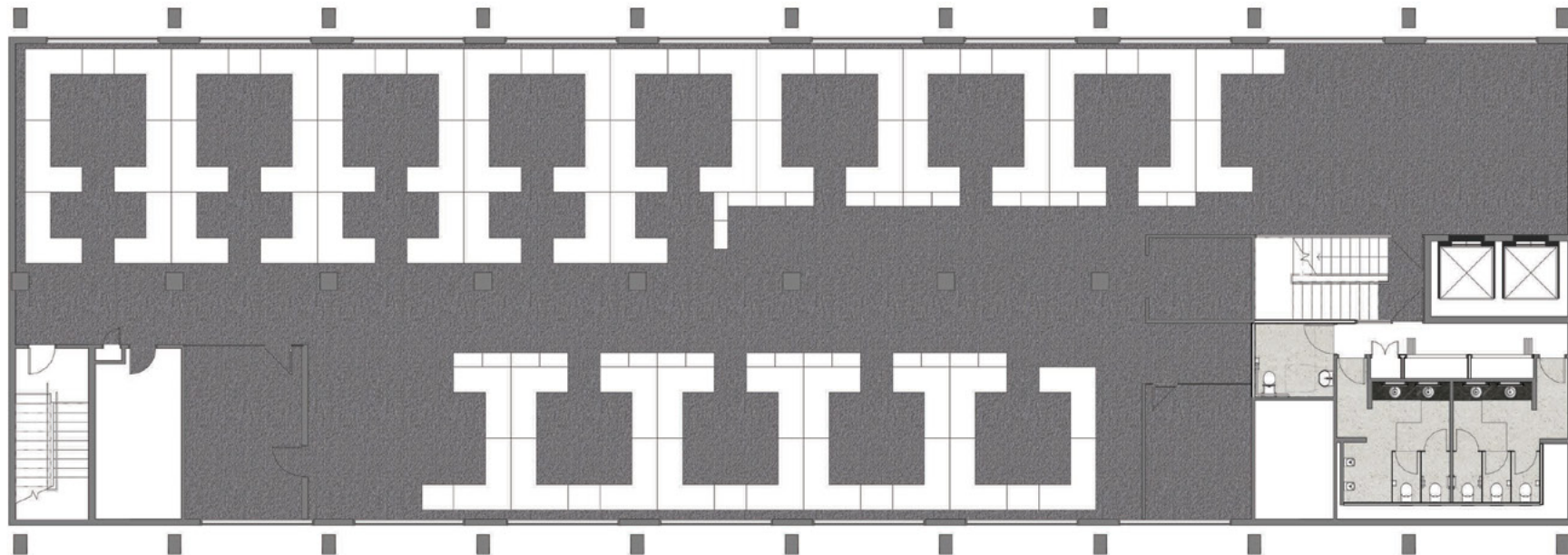
Floor Plans

350 Wellington Road

Level 1 (inclusive of ramps)

639m²

*Subject to survey on completion of refurbishment.



Level 1 - 639m² (NLA)

Floor Plans

350 Wellington Road

Level 2

596m²

*Subject to survey on completion of refurbishment.



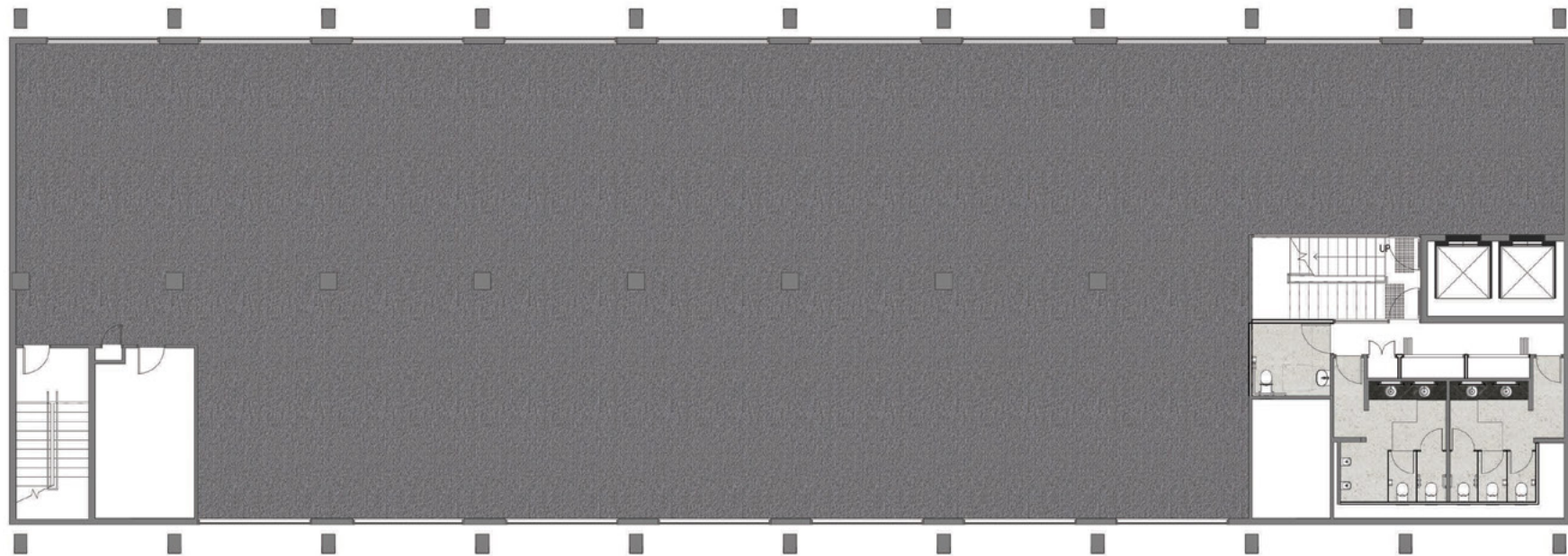
Level 2 - 596m² (NLA)

Floor Plans

350 Wellington Road

Level 3 (inclusive of proposed lift) 639m²

*Subject to survey on completion of refurbishment.



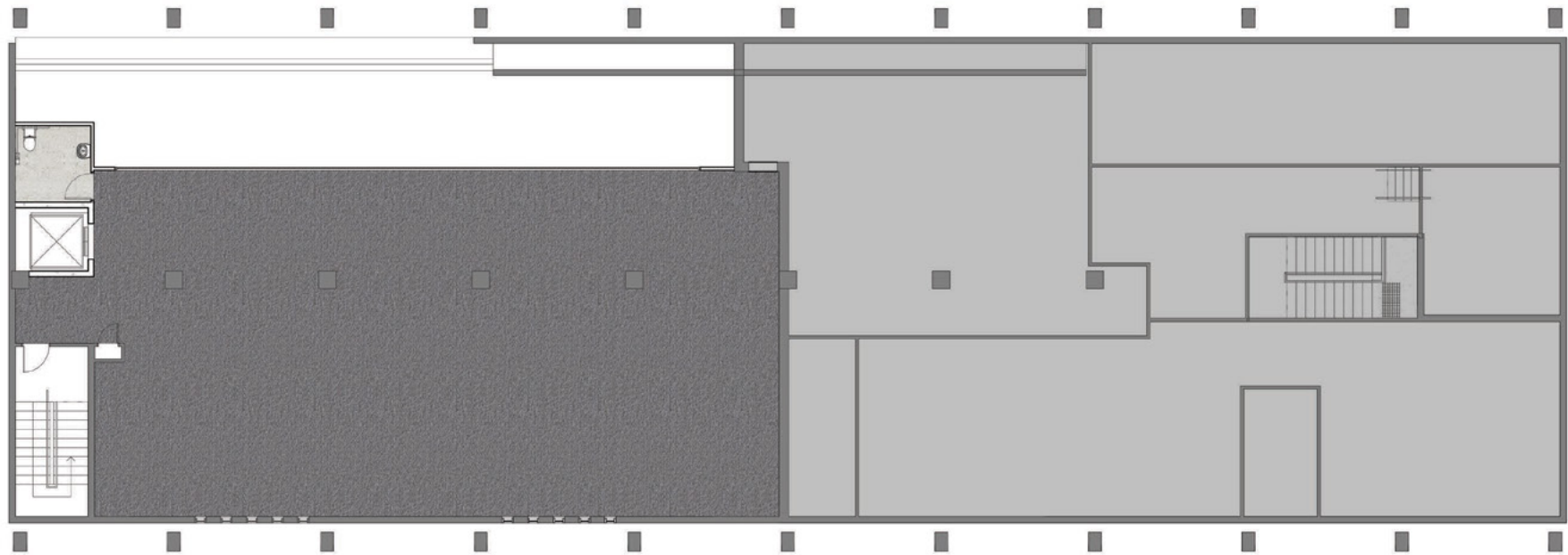
Level 3 - 639m² (NLA)

Floor Plans

350 Wellington Road

Level 4 (inclusive of proposed lift) 248m²

*Subject to survey on completion of refurbishment.

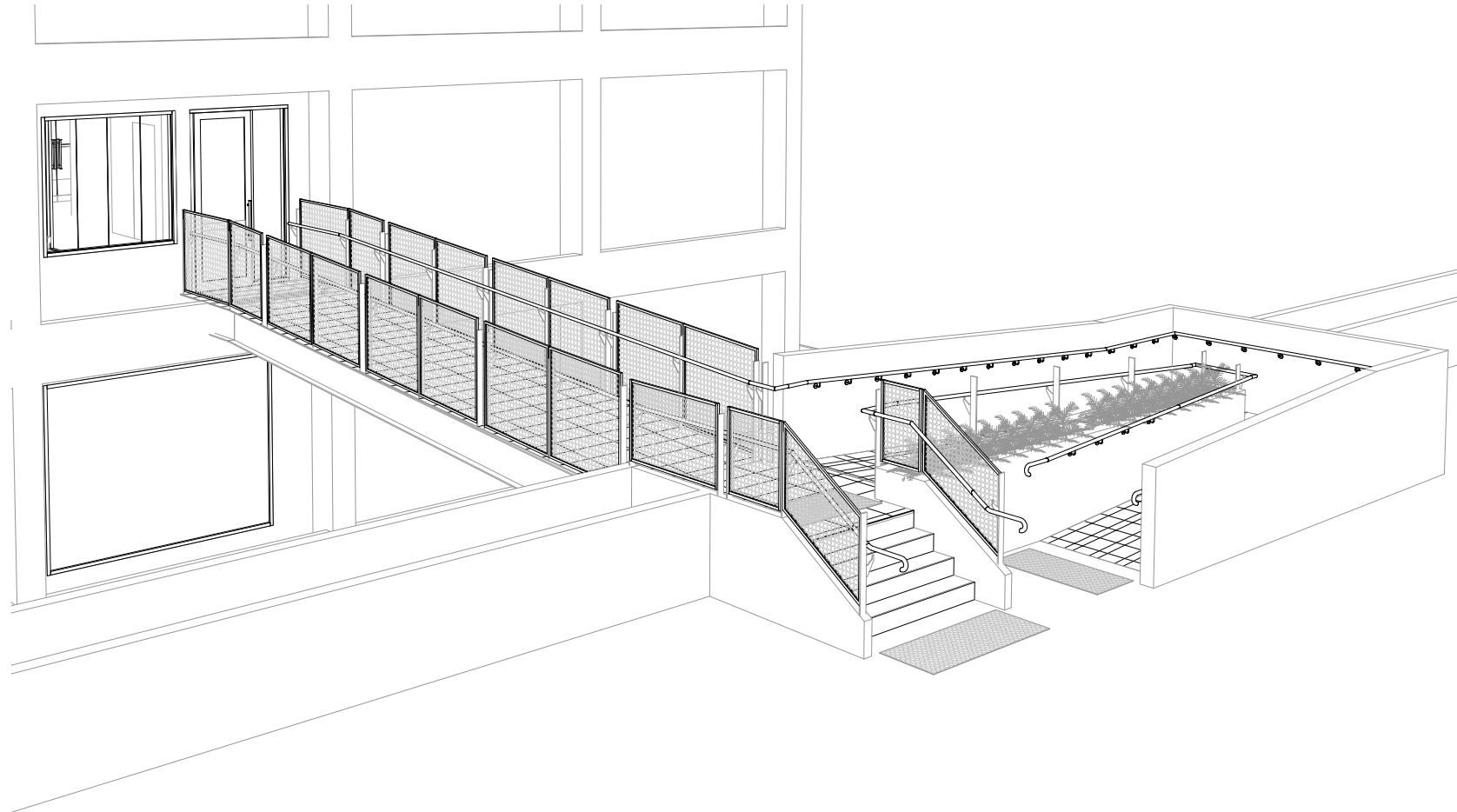


Level 4 - 248m² (NLA)

Planned Bridge Connection

From 350 Wellington Road to podium and Café

(Located on Level 2, access from all floors)



Planned 8m Pylon Signage

On the corner of Wellington Road & Springvale Road

