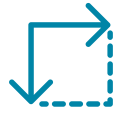


Rockhampton

The largest regional shopping centre between Maroochydore and Mackay includes Woolworths, Coles, Kmart, Big W, Harris Scarfe, H&M, 10 mini-majors, 160 specialty stores and BCC Cinemas.

The centre features an all-weather casual dining precinct including Guzman Y Gomez, Burger Urge and Schnitz. The centre opened the first H&M, Mimco and Peter Alexander in Central Queensland in late 2017.

Centre Information



GLA
58,204 SQM



CAR SPACES
2,999



SPECIALTY NO
160



MAT TRAFFIC
6.52M



MAT SALES
\$346.16M

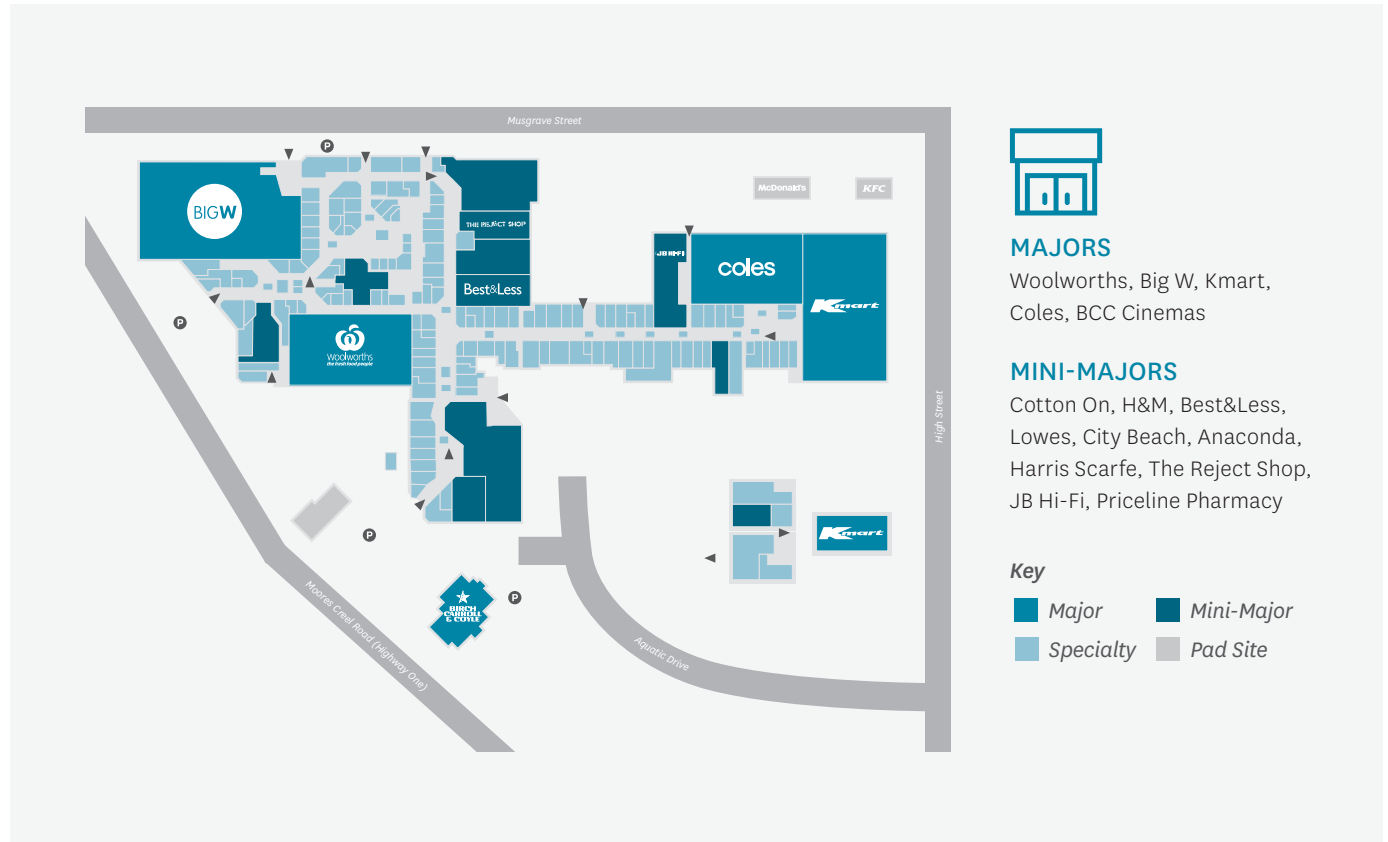


SPECIALTY SALES \$PSM
\$9,562



AVERAGE SPEND
\$53.10

Information is accurate as at 31 December 2018. Specialty number includes kiosks and shops. Does not include ATMs.



Trade Area Demographic

Stockland Rockhampton is forecast to service a total trade area population of 234,172 by 2021. The total trade area has an average household income of \$98,639, which is 12.8% higher than the non-metro QLD average. The trade area has a large proportion of couples with dependent children 46% compared to the non-metro QLD average of 41.7%.

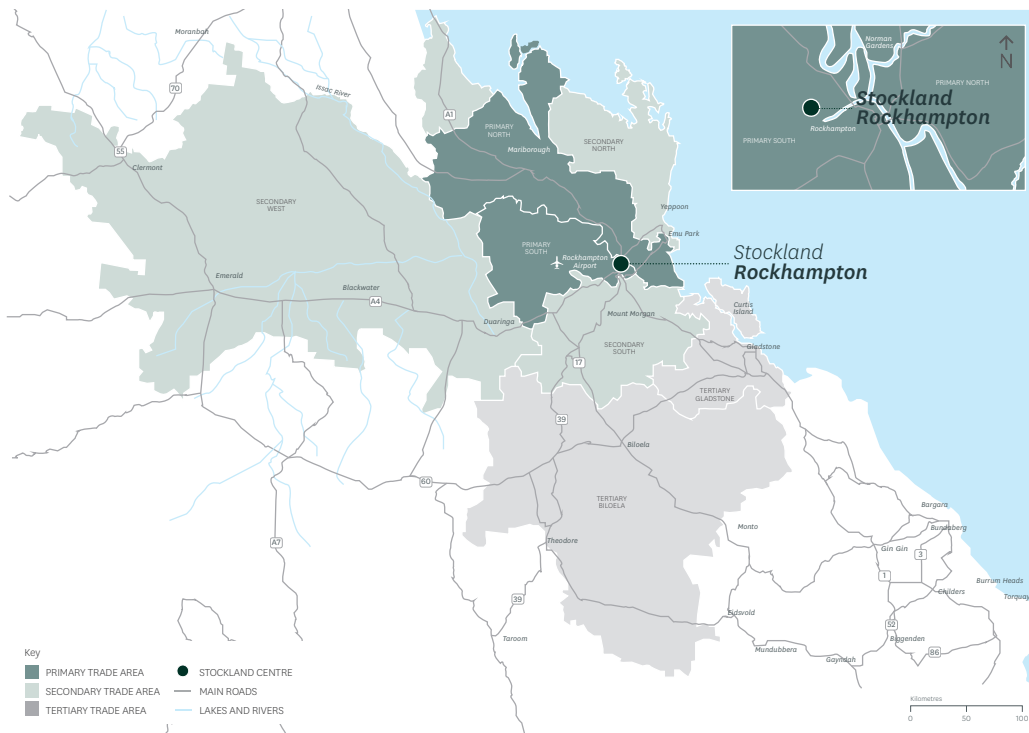
POPULATION

234,172
 in total trade area by 2021

AVG. HOUSEHOLD INCOME

\$98,639
 in total trade area

Trade Area Map



Characteristics	Primary Sectors		Secondary Sectors			Main TA	Tertiary Sectors		Total TA	Non Metro QLD Avg.	Aust Avg.
	North	South	North	South	West		Biloela	Gladstone			
Income Levels											
Average Per Capita Income	\$34,693	\$35,463	\$37,161	\$31,224	\$44,999	\$37,342	\$40,571	\$42,601	\$38,884	\$35,280	\$38,500
Per Capita Income Variation	-1.7%	0.5%	5.3%	-11.5%	27.5%	5.8%	15.0%	20.8%	10.2%	n.a.	n.a.
Average Household Income	\$89,318	\$87,764	\$88,668	\$72,429	\$118,951	\$94,191	\$102,303	\$109,962	\$98,639	\$87,408	\$98,486
Household Income Variation	2.2%	0.4%	1.4%	-17.1%	36.1%	7.8%	17.0%	25.8%	12.8%	n.a.	n.a.
Average Household Size	2.6	2.5	2.4	2.3	2.6	2.5	2.5	2.6	2.5	2.5	2.6
Age Distribution (% of Pop'n)											
Aged 0-14	20.7%	21.2%	18.2%	18.2%	25.1%	21.3%	22.4%	23.5%	21.9%	18.7%	18.0%
Aged 15-19	6.8%	7.4%	6.4%	5.5%	5.7%	6.6%	5.6%	6.4%	6.5%	6.2%	6.1%
Aged 20-29	13.7%	14.1%	9.4%	7.4%	14.4%	12.9%	11.8%	13.5%	13.0%	12.3%	13.9%
Aged 30-39	13.4%	12.5%	10.7%	10.0%	17.0%	13.4%	14.5%	14.4%	13.7%	12.5%	14.1%
Aged 40-49	12.9%	12.1%	13.4%	13.3%	14.1%	13.1%	13.3%	15.2%	13.6%	13.7%	13.7%
Aged 50-59	12.9%	13.1%	15.4%	17.0%	12.6%	13.5%	14.2%	13.2%	13.5%	13.6%	12.9%
Aged 60+	19.7%	19.5%	26.3%	28.7%	10.9%	19.2%	18.1%	13.7%	17.8%	23.1%	21.3%
Average Age	37.3	37.1	41.5	42.8	32.6	37.1	36.8	34.5	36.5	39.6	38.9
Housing Status (% of H'holds)											
Owner/Purchaser	67.9%	61.5%	70.4%	79.2%	47.1%	63.3%	65.3%	61.7%	63.0%	64.7%	67.9%
Renter	32.1%	38.5%	29.6%	20.8%	52.9%	36.7%	34.7%	38.3%	37.0%	35.3%	32.1%
Birthplace (% of Pop'n)											
Australian Born	90.3%	92.3%	88.8%	95.2%	89.0%	90.4%	91.3%	85.1%	89.1%	82.3%	72.9%
Overseas Born	9.7%	7.7%	11.2%	4.8%	11.0%	9.6%	8.7%	14.9%	10.9%	17.7%	27.1%
- Asia	4.5%	2.1%	1.0%	0.4%	2.5%	2.8%	3.5%	3.7%	3.0%	3.5%	10.7%
- Europe	1.7%	2.0%	5.1%	2.4%	1.6%	2.4%	1.6%	3.5%	2.6%	6.0%	8.0%
- Other	3.5%	3.6%	5.1%	2.0%	6.9%	4.5%	3.6%	7.7%	5.2%	8.1%	8.4%
Family Type (% of Pop'n)											
Couple With Dep't Children	43.2%	41.9%	39.1%	33.9%	54.0%	44.2%	48.5%	50.2%	46.0%	41.7%	45.2%
Couple With Non-Dep't Child	7.6%	6.7%	7.2%	7.2%	5.1%	6.8%	6.5%	6.0%	6.6%	6.7%	7.8%
Couple Without Children	22.8%	22.1%	29.0%	29.4%	20.5%	23.5%	25.4%	22.7%	23.4%	26.1%	23.0%
Single With Dep't Child	11.4%	12.8%	9.7%	10.6%	8.2%	10.6%	5.9%	8.8%	9.9%	10.3%	8.9%
Single With Non-Dep't Child	3.8%	4.0%	2.8%	4.5%	1.9%	3.3%	2.5%	2.6%	3.1%	3.5%	3.7%
Other Family	1.0%	1.1%	0.7%	1.1%	0.8%	0.9%	0.8%	0.7%	0.9%	0.9%	1.1%
Lone Person	10.3%	11.4%	11.5%	13.5%	9.6%	10.7%	10.5%	8.9%	10.2%	10.8%	10.2%

Trade Area Population

Trade Area Sector	Forecast Population 2021	Forecast Population 2026	Average Annual Change (%) 2021-2026
Primary Sectors			
- North	57,452	59,733	0.8%
- South	33,320	35,039	1.0%
Total Primary	90,772	94,772	0.9%
Secondary Sectors			
- North	28,100	30,350	1.6%
- South	7,430	7,680	0.7%
- West	35,880	36,255	0.2%
Total Secondary	71,410	74,285	0.8%
Main Trade Area	162,182	169,057	0.8%
Tertiary Sectors			
- Biloela	13,620	13,820	0.3%
- Gladstone	58,370	60,870	0.8%
Total Tertiary	71,990	74,690	0.7%
Total Trade Area	234,172	243,747	0.8%

Sources Map: Location IQ, July 2017; Demographic Data: ABS Census of Population and Housing 2016; Location IQ, May 2018.

All due care has been taken in the preparation of this document and as at 31 December 2018, the information in this document is understood to be correct. However, no warranty is given as to the accuracy of the information contained in this document. Trade area maps and population forecasts are provided as an estimation and are indicative only. It should be noted that the information contained in this document should not be taken to be correct at any future date. Trading patterns described in this document will change in the future and this document should not be relied upon in any way to predict future trading patterns. Average annual change (%) numbers provided in this document are calculated using CAGR. The management of Stockland regard the contents of this document as confidential and retailers should therefore not disclose its contents to any person other than personnel of the retailers involved in the management or promotion of their business at Stockland.