

What's on at Altrove

Welcome to the Winter 2021 edition of the Altrove newsletter!

A message from Benjamin Vella, the Development Manager for the Altrove community.

Welcome to the Winter Edition of the Altrove Newsletter. I trust that this finds you all safe and well in the current environment, and that you've enjoyed as much Lockdown baking and DIY projects as I have. As we live through this incredibly challenging period, my priority, and all of Stockland will continue to be the safety, health and wellbeing of our customers, residents, people and community partners.

I'm excited to have joined this community again as the Development Manager, taking over from Anna Ganko earlier in the year. Having previously worked on the Altrove precinct early in my career, I am excited to have returned and look forward to working closely with the Altrove community to deliver a vibrant precinct. I'm amazed at just how much the community has grown (as have the trees).

It's great to see that you have been able to enjoy our July school holiday workshops facilitated online. We've seen a variety of workshops keeping Altrove families entertained including science experiments, slime making, LEGO building and even a learn to juggle session.

On the development front the team has been busy finalising plans for the next stage of development on Altrove Boulevard/Calder St and recently obtained approval for the Hilltop Park embellishments with work planned to commence soon. TfNSW are progressing with detailed design of the commuter carpark following its compulsory acquisition of the land in June. The opening of stage 1 is forecast in Autumn 2022 along with the extension of Altrove Boulevard and Calder Street. This will require a revision of the Temporary Community Hub location closer to the station that we hope to share updated plans with you soon.



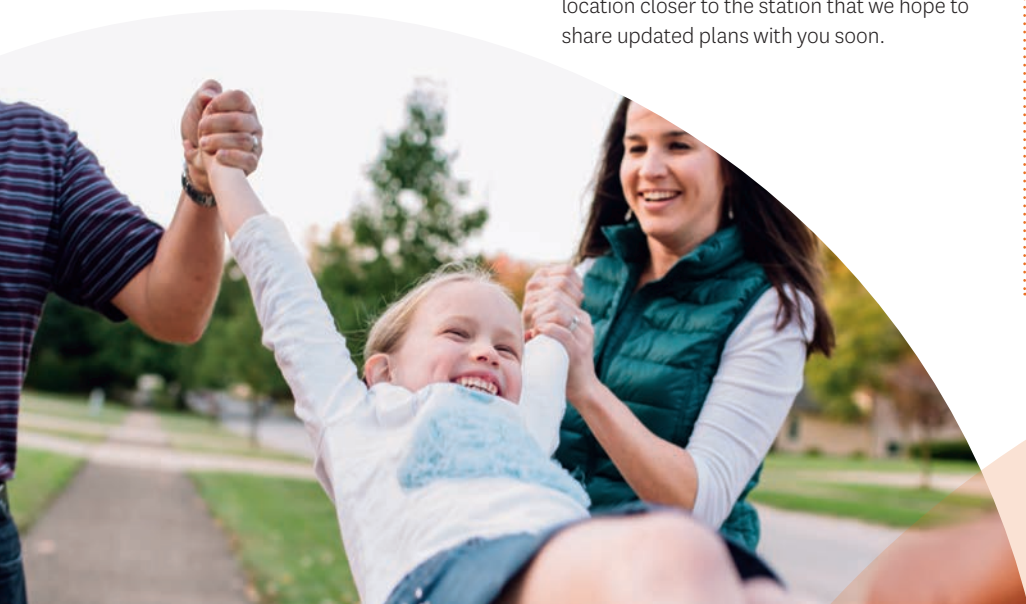
2021 Liveability Survey Results

Stockland doesn't just talk liveability, we measure it. It's how we know you love where you live – and how we find ways to keep improving the lifestyle experience in our communities. The Stockland Liveability Index is our annual survey that checks to see how you feel about your health and wellbeing, quality of life and community connections.

Thank you to everyone who took part in our Altrove Liveability survey earlier this year. Our most recent survey results are in and we are thrilled to see how much you love living at Altrove. Here are some top level results;

- 88% of residents feel like they're part of the community
- 88% of residents are happy with their personal health and wellbeing*
- 78% of residents are happy with the ease of access to public transport within the community

To learn more about these results, head to our website: <https://www.stockland.com.au/residential/nsw/altrove/life-at-altrove/liveability-at-altrove>





Virtual school holiday activities

Due to Covid-19 restrictions, our school holidays activities were moved online, with groups connecting over Zoom for a variety of free, fun and engaging interactive sessions.

- Junior jugglers participated in a workshop which saw them design their own juggling balls and learn the basics of juggling.
- The kids got busy mixing and making their own slime from the comfort of their kitchen.
- BRICKS 4 KIDZ®, the world's leading provider of Educational Play workshops with LEGO® Bricks led an interactive LEGO workshop filled with fun an Imaginative Play.
- Minds were challenged in Kids Trivia, with some of the most creative answers winning \$150 worth of prizes!



New Terrace Homes Coming Soon

We are very excited to announce that after much planning and discussion with Council we have lodged plans for our next stage of Terraces at Altrove. This innovative proposal for integrated community living will feature 65 townhouse dwellings and 1800m² of communal open space in stage 1. Stage 2 will include a proposal for 12 shop-top 2 bed apartment dwellings over ground floor retail in two blocks along Calder St extension.

The development will also include the extension of Altrove Boulevard and Calder Street. Commencement of pre-sales and construction will depend upon the development approval process. We anticipate that Council will provide notification of the DA add DA reference over the coming weeks. If you any queries please contact customercareteam@stockland.com.au for more information, this proposal represents a positive step forward for the Altrove community.

LLGA Update

Exercise at home with our on-demand videos and live-streams running daily. You can still connect with other LLGA members by booking into a live-stream session and say Hello to our trainers online. Select from a range of different classes to complete in your own time from some of these options below: Boxing, Cross Training, Pilates, Yoga, Recipe Ideas, Mediation, Sleep Help. Go to livelifegetactive.com to register.



RSGK Coming Soon

We've loved helping your little ones develop essential motor skills in a free, fun, non-competitive environment; learning a range of sports, developing life skills, increasing their fitness and self-esteem, making new friends and most of all having lots of fun!

Unfortunately, Ready Steady Go Kids has been postponed for Term 3 in accordance with the updated Covid-19 restrictions. We are following the advice carefully, and will keep you informed of any changes as they happen. Follow us on Facebook to receive up-to-date information and updates.



CARE Grants

Stockland's CARE Grants program, now in its eighth year, this year celebrated a key milestone with over \$2 million donated to more than 2,000 local community groups nationally since the program started in 2014. Once again this year, we've awarded \$285,000 to organisations across the country to support local community-building initiatives.

We are excited to announce the winning community groups for 2021 have been selected to receive a \$1000 Stockland CARE Grant from Altrove for their community program. The CARE Grant winners from Altrove are:

- Australian Tamil Chamber of Commerce
- Sir Roden and Lady Cutler Foundation
- Horsley Park Public School P&C
- Schofields Public School P&C
- NSW Goalball Association Incorporated

Hilltop Park

Over the coming months, we will be delivering changes to the Hilltop Park that will be suitable to the scale of the local community and complementary to the existing space, improving the quality of our parks and environment.

New inclusive play equipment, seating and fitness equipment will be installed once restrictions ease in NSW, now that approval has been provided by Blacktown City Council. We acknowledge that home-schooling is still in place in NSW, we plan to commence works on the exercise equipment first and hold off any modifications to the playground equipment until school officially returns to classrooms, this will allow children to continue to use the playground during their home learning period.



Future Works

Our plans for a future Village Centre remain on hold pending the announcement of a metro line by Transport for NSW (TfNSW). We are continuing to liaise with the relevant authorities to facilitate the determination of this corridor.

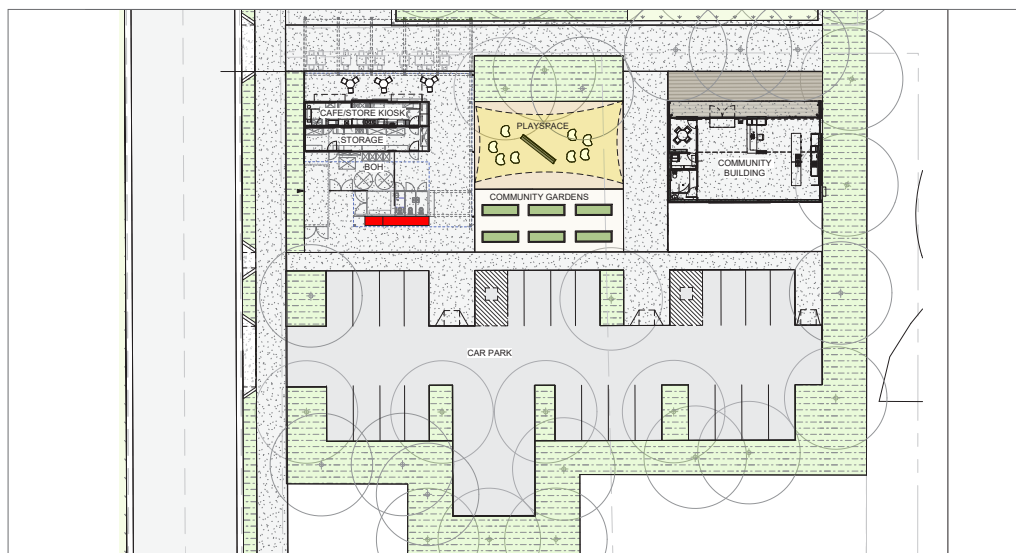
Sales Update

Altrove Sales and Information Centre is now permanently closed and has been decommissioned and relocated to make way for the commuter carpark expansion by TfNSW. We have temporarily relocated the buildings to another part of the site for reuse once council approved.

We will look to install a modified sales centre for the Stage 10 Terraces and will share details once we have more developed plans.

Community Hub

We are still planning to deliver a temporary community hub, cafe and play spaces that will now be associated with a new relocated passenger drop-off/pick-up zone and pedestrian access to Schofields Train Station at the end of Altrove Boulevard adjacent to the proposed commuter carpark. With the recent Transport for NSW acquisition for a commuter carpark at the top of the precinct now completed, the planning and design for the temporary hub can now continue. The previous plans shared with the community now have to be amended as a result of the commuter carpark and will be shared with you as soon as they are completed.



Schofields Train Station Commuter Carpark

Transport for NSW (TfNSW) have now compulsorily acquired the Schofields Commuter Carpark site within the Metro Extension Transport Investigation Corridor. TfNSW have now obtained approval for the proposed carpark extension and are now working through detail design and procurement ahead of construction commencement in the last quarter of this year.

Please refer to the TfNSW website <https://www.transport.nsw.gov.au/projects/current-projects/schofieldscommuter-car-park> for more detail where you can sign up to receive email updates about the project.

