




Foreshore
COOMERA



Stockland
it's your place



Welcome to your new life

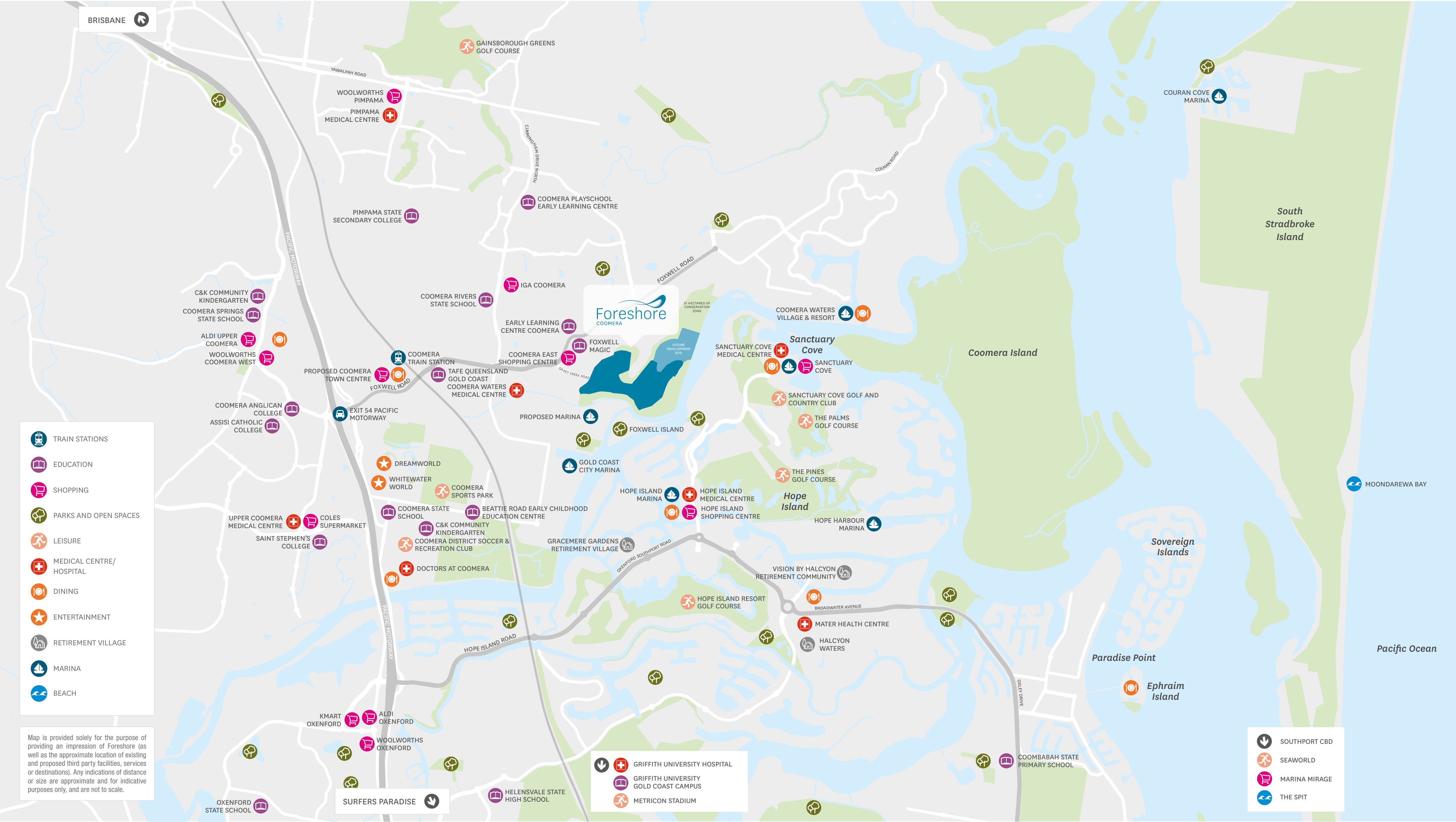
Discover the life you've been dreaming of at Foreshore, a serene waterside enclave perfectly positioned by the river in one of the most sought-after regions, the Gold Coast.

It begins the moment you drive in. The sound of birds welcoming you home. The nod of your neighbour as you pull into the driveway. Those little moments of peace and connection. A place where nature's beauty and modern living find a balance. Where social connection and solitude are both abundant. Where active living is a part of the everyday. Where you'll feel miles away, yet surprisingly connected.

Surrounded by nature, Stockland's exciting new residential community, Foreshore, is a place to relax and enjoy the best life has to offer with everything you need at your doorstep.

Take full advantage of this unique coastal location on the Coomera River and spend time reconnecting with life in a tranquil riverside setting.

This is the place where life is in flow.



Discover our tranquil waterside retreat surrounded by a world of fun

Foreshore exemplifies the laid-back Gold Coast lifestyle, being perfectly located close to all of life's essentials – and the little luxuries too.

Sailing, kayaking, fishing, as well as walking and cycling trails, are on your doorstep and a range of shopping, health, education and entertainment options are within easy reach.

- Easy access to the Pacific Motorway
- 5 minute drive to the Coomera Train Station
- 5 minute drive to the proposed Coomera Town Centre with shopping and dining
- 27 kilometre drive to Surfers Paradise
- 57 kilometre drive to Brisbane CBD

Transport

Coomera Train Station
Pacific Motorway

Retail

Sanctuary Cove
Hope Island Shopping Centre
Coomera East Shopping Centre
Proposed Coomera Town Centre with retail and dining
Coomera Waters Village
Helensvale retail and dining precinct
Harbour Town Shopping Centre

Entertainment and Marinas

Gold Coast City Marina
Sanctuary Cove Golf & Country Club
The Pines Golf Course
The Palms Golf Course
Hope Island Resort Golf Course
Gainsborough Greens Golf Course
Dreamworld and WhiteWater World
Coomera Sports Park

Education

TAFE Queensland Gold Coast
Coomera Rivers State School
Pimpama State Secondary College
Coomera Anglican College Assisi Catholic College
Proposed Coomera Primary School

Healthy living comes naturally

With plenty of green open spaces and kilometres of proposed dedicated walking and bike trails alongside nature, Foreshore will be a place where living a healthy and active lifestyle comes naturally.

Spread across 98 hectares, our waterside community will be a place where you and your family can embrace the natural beauty of your new home and happily indulge in your favourite activities together.

Whether it's hopping on a kayak and taking a paddle, wandering through serene proposed parklands, fishing with the kids along the Coomera River, or cycling past the wetlands, the great outdoors beckons.

Bordered by both the Coomera River and Oakey Creek, our unique new community is planned to include two kilometres of river frontage, 51 hectares of conservation areas and open space, and numerous proposed parks and playgrounds.

Enjoy a day with the kids at the proposed park or spend an afternoon fishing from the proposed jetty on the Coomera River – it's easy to find the right balance in life at Foreshore.

Coasting along

When adventure calls, set sail from the Gold Coast City Marina to explore the Gold Coast's many waterways or head over to South Stradbroke Island for a day of fun.

Some of Australia's best beaches as well as numerous foreshore parks are within easy reach of our perfectly positioned community. For those who love the café culture, vibrant Gold Coast destinations such as Surfers Paradise and Broadbeach are close by.



Everything
you need within
easy reach



Foreshore is designed with your lifestyle in mind, offering plenty of places to relax, dine and play while embracing the surrounding natural environment, to create a place of pure harmony.

Right on our doorstep is the new Coomera East Shopping Centre and the proposed Coomera Town Centre is minutes away – everything you need from supermarkets to specialty stores and dining, is within easy reach.

Numerous other dining and retail therapy options are close at hand including Helensvale’s shopping and dining precincts and the outlet shopping mecca Harbour Town Shopping Centre. Take a journey a little further afield and you will find vibrant destinations such as Robina Town Centre and Pacific Fair which include cinemas, plus the trendy nightlife precincts of Surfers Paradise and Broadbeach.

Take a visit to nearby Sanctuary Cove and Hope Island to round out your café culture and tantalise your taste buds by enjoying a dining experience in a stunning coastal setting.



Fun in the sun

There will never be a dull moment at Foreshore with a wide range of recreation and entertainment opportunities waiting for you.

Some of Australia’s most exciting theme parks are minutes away by car and if golf suits you to a tee, there are four separate golf courses close by.

Weekend sailors are also catered for with five marinas within close proximity to Foreshore, or sail to Couran Cove for a weekend getaway.

The Gold Coast is well known for its variety of exciting entertainment precincts, including the Gold Coast Turf Club and Jupiters Casino – the only problem you’ll have is finding the time to fit it all in.



Discover a world of opportunity at our new address

Based on current market trends, developable land on the Gold Coast may be exhausted within approximately 6 years.[^]

Set in an enviable location in the Gold Coast's thriving Coomera region, Foreshore is a brand new community that epitomises a laid-back coastal lifestyle.

Here you will find the ultimate in waterside living by the Coomera River, surrounded by natural beauty and yet with all the conveniences of modern living close at hand.

This is a place where nature's beauty and modern living find balance. Stockland,

Australia's largest residential developer, is creating a connected community focused on the health and wellbeing of its residents.

Public transport can be easily accessed with the Coomera Train Station just minutes away by car. The Pacific Motorway is a quick drive along Foxwell Road, providing a direct route to the Brisbane CBD approximately 57 kilometres to the north and Australia's most well-known tourist destination of the Gold Coast to the south.

You will have peace of mind knowing that your health needs are catered for with a range of medical facilities nearby, including the Coomera Waters Medical Centre on Shipper Drive. The new, state-of-the-art Gold Coast University Hospital is also located at Southport.

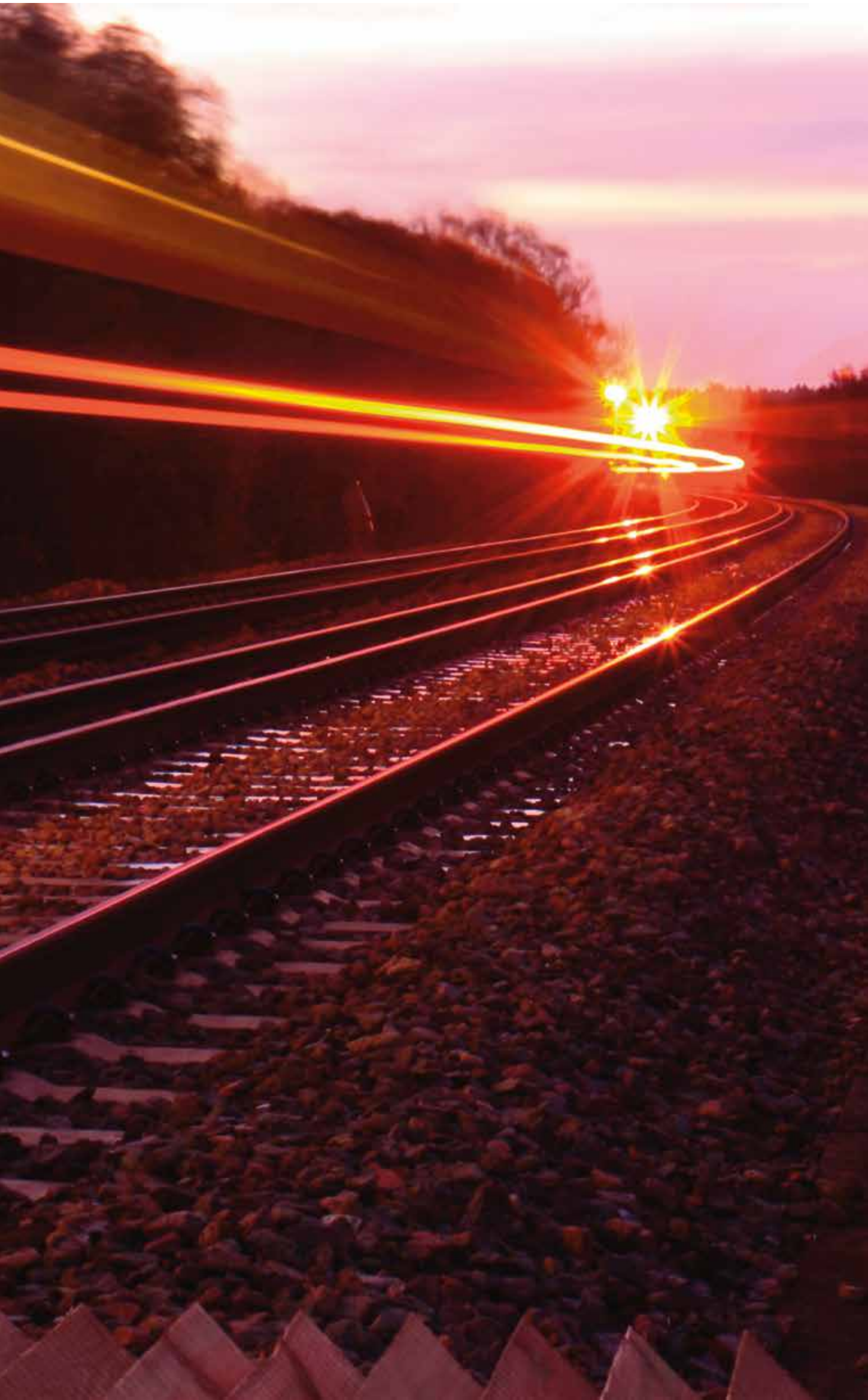
Our family-friendly community will be home to approximately 1,400 people once completed, with future residents set to benefit from a happy, healthy lifestyle in harmony with nature.

This is your opportunity to secure your brand new home by the water in one of Australia's sought-after regions, the Gold Coast.*

* Source: National Land Survey Program (Dec 2016), Research4/Charter Keck Cramer.

^ National Land Survey Program, Charter Keck Cramer/Research4, December 2016 Survey.





Happy families grow here

Finding the right home for you and your family is more than just choosing wall colours and kitchen benches. It's important to know that you live in a place where neighbours become friends and growing families thrive.

Foreshore offers just that and more. Our thoughtfully planned community will have everything you and your family needs for health and happiness within easy reach.

Innovative parks and playgrounds are proposed to be within walking distance of all homes, providing the perfect place for catching up with

friends and family and staying fit and active, and our leafy streets will be well-lit.

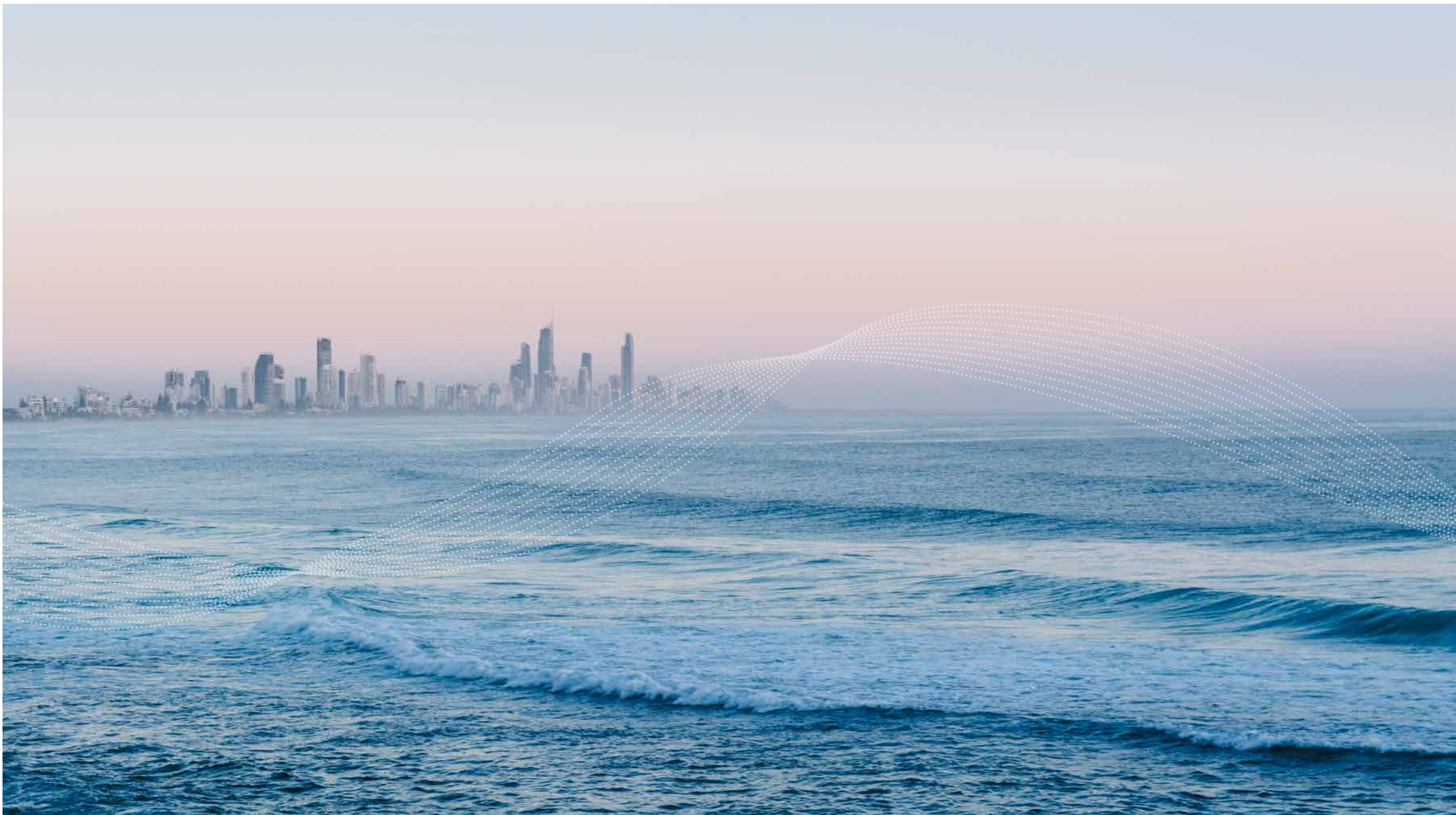
Dedicated conservation areas will ensure our unique environment is rehabilitated and preserved for future generations to enjoy. Families will be able to watch the birdlife in our wetlands and easily access the local waterways.

Growing minds are well catered for with a wide range of education hubs close by, from childcare centres to a variety of private and

public schools for primary and secondary students, and the TAFE Queensland Gold Coast campus.

Additionally, bright minds of any age can further their studies by taking advantage of the many quality universities located within the local region, including Griffith University and Bond University.

Keeping up with technology will also be made easy with Foreshore set to be an NBN-ready community, ensuring you can access the world with a touch of a button.



Thriving communities are our specialty

The moment you step into a Stockland community you know you have found a special place.

This is a place where a better lifestyle comes naturally, where there are a wide range of modern homes to suit your needs and budget, where community spirit is alive and well and neighbours greet each other by name; and all your daily requirements are on your doorstep.

The day you move into a Stockland community you are immediately becoming part of a neighbourhood that has been thoughtfully designed for you and your family.

As Australia's leading property group, we have spent the past 60 years creating special places that meet the needs of our valued customers and communities, including residential communities, retirement villages and retail destinations.

Throughout this time our customers and communities have been growing, adapting, sharing and changing our places into their places.

We believe, of course, in environmental sustainability but just as importantly we believe in social sustainability and we are committed to creating places where communities thrive.

***We make the places.
You make them your own.***



stockland.com.au/foreshore



Stockland
it's your place

This brochure is provided solely for the purpose of providing an impression of the proposed development called "Foreshore" (as well as the approximate location of existing and proposed third party facilities, services or destinations) and the contents are not intended to be used for any other purpose. Any statements of distance, size or area are approximate and for indicative purposes only. No representations and no warranties are given about the future development potential of the site, or the current or future location or existence of any facilities, services or destinations. All images and statements are based on information available at the time of creation of this brochure (March 2017) and may change due to future circumstances. Information and images relating to landscaping, rivers and waterways are indicative only and may refer to or show features which may not be mature or complete at settlement. All distance and travel timeframe references in this brochure are estimates only, refer to distance from the Sales & Information Centre, refer to distance by car or driving time (unless specified otherwise), and are based on information obtained from Google Maps. This brochure is not a legally binding obligation or warranty. No liability is accepted for any loss or damage arising as a result of any reliance on this brochure or its contents.