

THE ISLA

Kalia Facade | On Display Design

226.3m² | 24.3sq | 4  2  2 

adenbrook
homes

FLOOR AREAS (m²)

Living	160.1
Garage	37.7

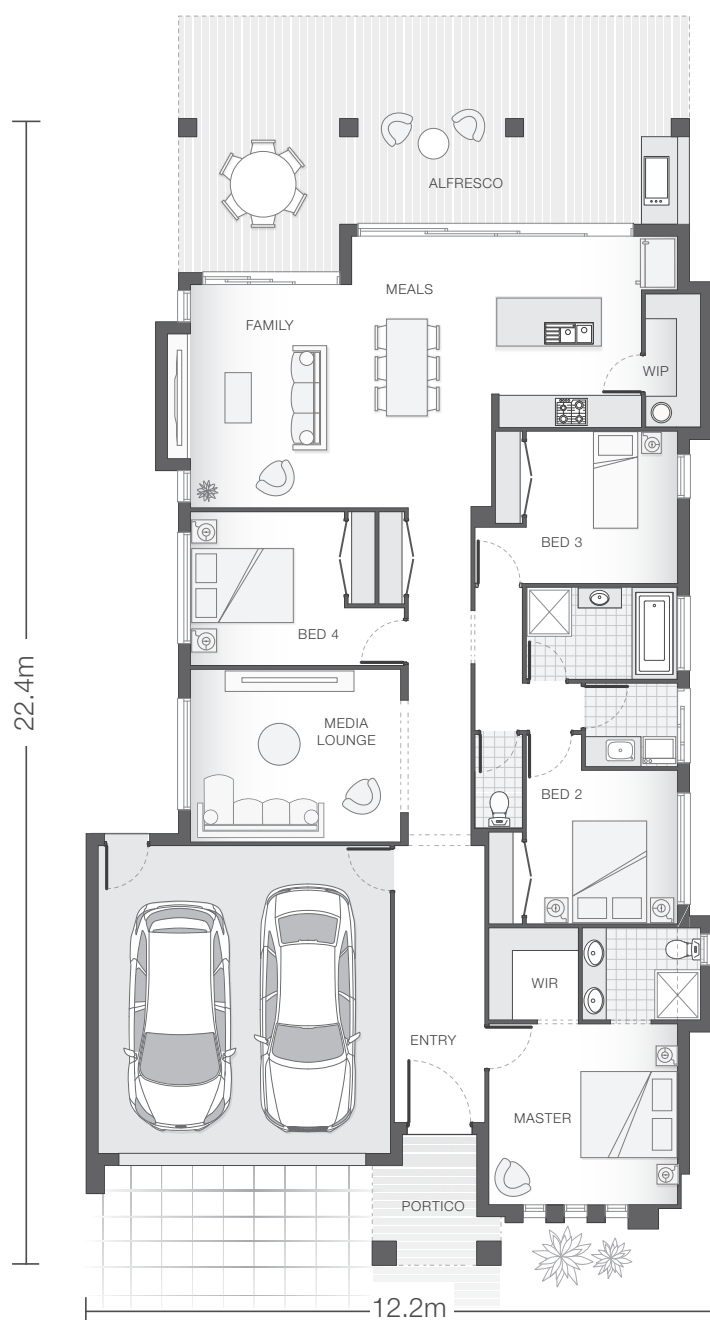
Alfresco	23.4
Portico	5.1

ROOM DIMENSIONS (m²)

Meals	2.7 x 5.2
Family	3.1 x 4.3
Master Bedroom	3.7 x 3.5

Bedroom 2	2.9 x 3.0
Bedroom 3	2.9 x 3.0
Bedroom 4	3.0 x 3.0

Media Lounge	4.1 x 3.4
Meals Alfresco	6.8 x 2.0
Family Alfresco	3.1 x 3.0



Your New Home Consultant

Jenny Clark P 0401 629 464

E jennifer.clark@adenbrook.com.au

adenbrookhomes.com.au

This display includes lifestyle options which highlight features in the design. Speak with a consultant about how you can customise the base plan to suit your lifestyle.

AB Aust Constructions Pty Ltd. QBCC Lic No: 15034354