

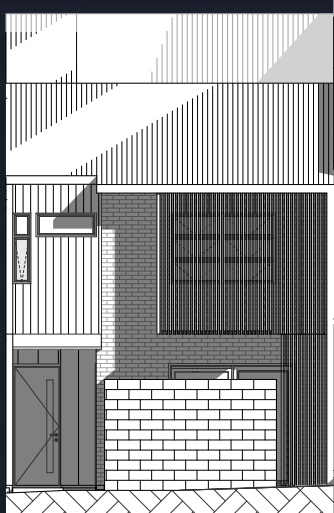
VIDA

NORTH LAKES

ANNETTE

LOT NUMBER 44

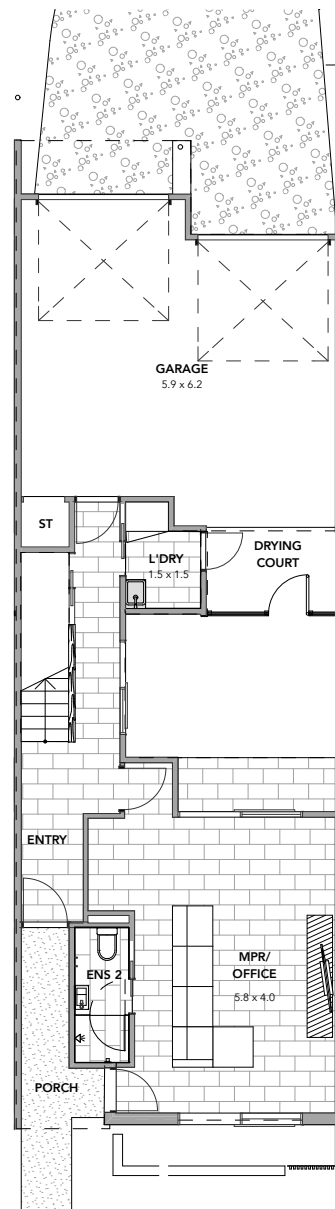
3 3 1 3.5 2



HOUSE AREA

Internal	182 m ²
Garage	43 m ²
External #	14 m ²
Total House Area	239 m²

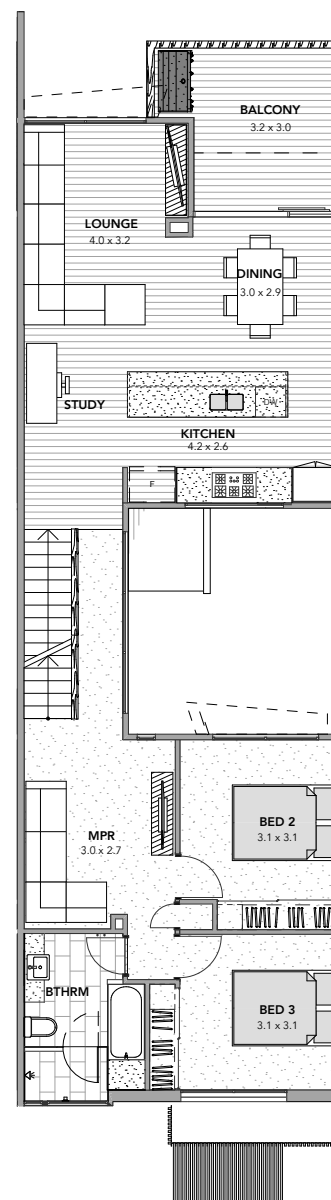
* Includes Alfresco, Porch and Drying Court areas



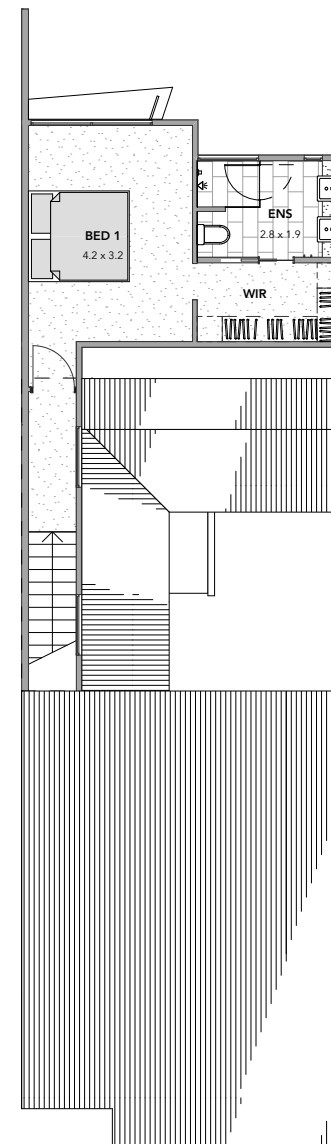
DISCLAIMER

Ground floor

This document is supplied solely for the purpose of providing an indicative floor plan of the nominated lot within the proposed development called "VIDA" and is not intended to be used for any other purpose. The contents of this document are based on information available to Stockland at the time of creation (July 2017). Unless otherwise specified, dimensions are taken from the mid-line of walls. All dimensions and areas are approximate. Cars, Furniture, decorative items and plants are shown for indicative purposes only and are not included in the sale. The contract for sale should be reviewed in relation to dimensions, areas, sale inclusions and specifications. Stockland reserves the right to make changes, without notice, to the information contained in this document at any time prior to you entering into a contract for sale with Stockland. If this document is included in a contract for sale, Stockland reserves the right to make changes to the information contained in this document in accordance with the terms of the contract for sale. Information and images relating to landscaping are indicative only and may show plantings which may not be mature at settlement. Fixtures for services (including but not limited to air conditioning unit, hot water system, clotheslines, meter box and bulkhead ceilings) are not shown on this document and will be housed at locations to be determined by Stockland at its absolute discretion. No liability is accepted for any loss or damage arising from the improper use or reliance on this document or its contents.



First floor



Second floor