

One city, many places



Cloverton





The Stockland story

For 70 years, we've been creating places that meet the needs of our customers and communities. And for years those customers and communities have been growing, adapting, sharing and changing our places into their places. Our communities across Melbourne and Australia are testament that this unique approach works.



9 reasons to make Cloverton my place

1. A place that will grow with you

The seed has been planted for a progressive, healthy, clever and connected city that will breathe new life into Melbourne's north and become a community of 30,000 residents. Over the next 30 years Cloverton will grow into a vibrant new city; a place where you'll be proud to live, work and play.

2. A place to relax and enjoy life

Discover a community designed with your lifestyle in mind, featuring plenty of places to sit back, relax, dine and play. Offering open parkland within strolling distance of every home, Cloverton will be a place in harmony, balancing the energy of its city centre with the tranquillity of its natural surrounds.

3. A place you will be proud to call home

Cloverton will soon become a focal point for Melbourne's north and a place where the community can gather as one to embrace new possibilities. This will be a city where you will feel a great sense of pride, knowing that it holds the same high standards as other coveted Stockland communities.

4. A place that is connected

Cloverton is your place to connect – a city designed with every convenience within easy reach. Perfectly positioned in the bustling outer northern suburbs, it's an easy commute to Melbourne's CBD via trains from the existing Donnybrook rail station or for drivers via the Hume Highway.

5. A place that has the lifestyle you deserve

Everything you need to create your dream lifestyle will be available in our vibrant and beautifully presented community. From a lively city centre where you'll be able to indulge in retail therapy and catch up with friends, to neighbourhood shopping centres, schools, childcare centres, community facilities, a retirement village and so much more.

6. A place where fresh thinking is celebrated

With future health facilities and an employment precinct, Cloverton will unlock fruitful possibilities for you and your business. Closer to home, innovative residential options will focus on sustainable design and cost of living efficiency now and into the future. Enjoy being part of this progressive city.

7. A place for ideas

Cloverton is home to an extensive display village, showcasing a diverse range of quality designed homes from Melbourne's leading builders. Be inspired by the latest innovations in products and designs. You will find all the motivation you need to build your perfect home, in one convenient place.

8. Your place to grow

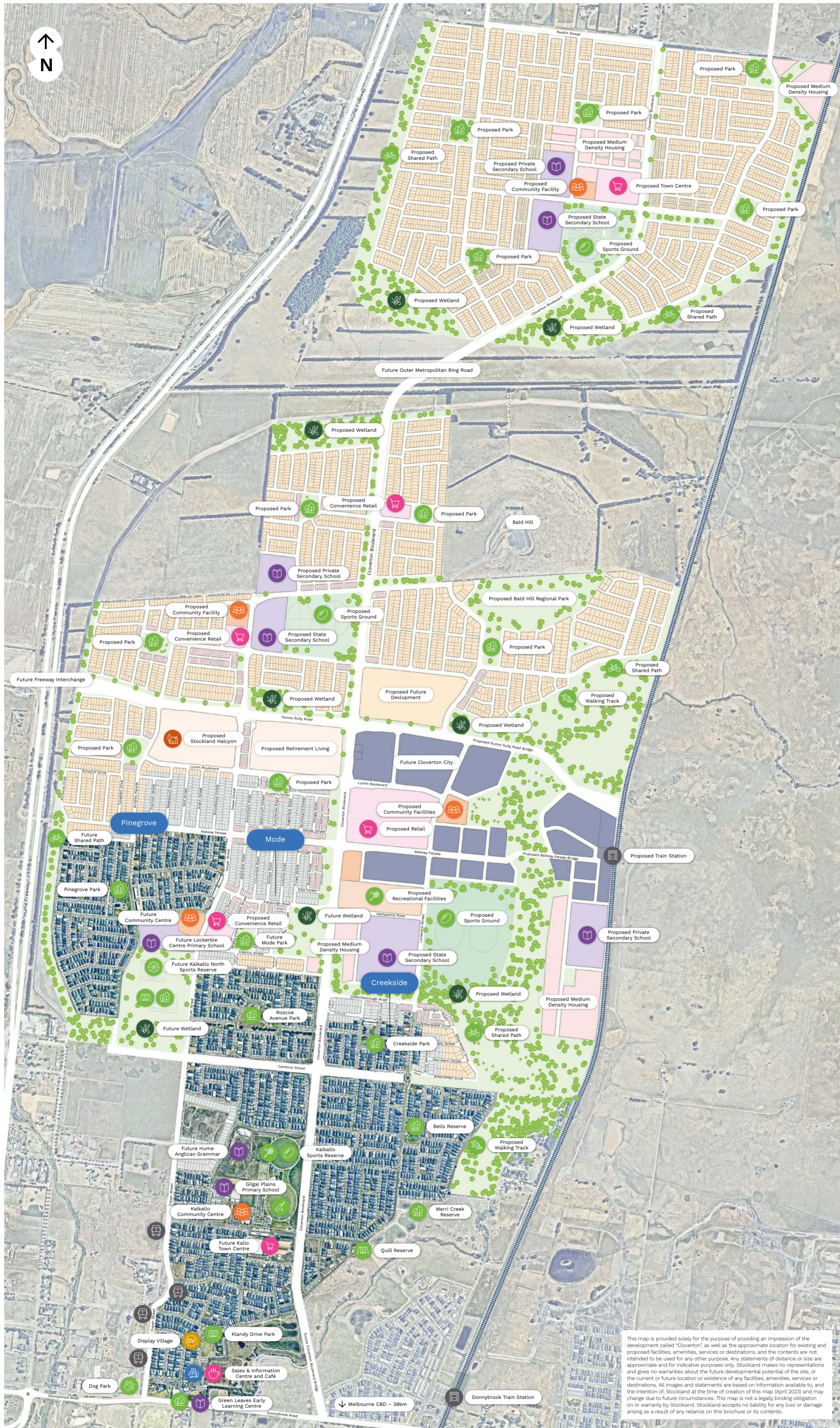
They say we never stop learning and at Cloverton that couldn't be more true. Cloverton is home to an early learning centre and Gilgai Plains Primary School, and will offer a selection of primary and secondary educational facilities, both government and private, delivering a wealth of choice for your family and for your future. The future local arts precinct, library and tertiary institution planned for coming years ensure Cloverton will be a smart city that continues to encourage education at any age.

9. A place where being healthy is easy

With a multitude of future walking and bicycle paths, sporting fields and plenty of open space, Cloverton will offer numerous opportunities for an active and healthy lifestyle for all its residents. Even the youngest bodies are catered for, with modern playgrounds peppering the community's expanse. Added to this, there will be first-class medical facilities available in the future, including a regional hospital.

Stockland acknowledges the Wurundjeri People as the Traditional Custodians and knowledge holders of the land the Cloverton community is situated on and where we live, work and play, and pay our respects to their Elders past, present and emerging.

Furthermore, we extend our respect and gratitude to all Aboriginal and Torres Strait Islander Peoples, businesses and communities and thank them for enriching our nation with their diverse languages, rich cultures and inherent connections to Country.



Shopping and Amenities

Proposed major retail and future city centre
 4 proposed neighbourhood centres
 Kalkallo Community Centre
 Proposed Government and civic facilities
 Located 10 kilometres from Craigieburn Central shopping centre

Medical Centres

Proposed regional hospital and medical services within future city centre

Transport Connections

Melbourne CBD - 38km
 Donnybrook train station
 Proposed Cloverton train station
 Located alongside the Hume Freeway
 Future freeway interchange

Parks and Open Spaces

Parkland and playgrounds
 Kalkallo Sports Reserve
 Shared walking and cycle paths
 80ha conservation area and Merri Creek
 Proposed Bald Hill Regional Park

Early Education and Schools

Gilgai Plains Primary School
 Proposed state primary schools
 Proposed state secondary school
 Proposed private schools
 Green Leaves Early Learning Centre
 Proposed tertiary institution within future city centre

Sales and Information Centre

Display Village

Multiple villages planned for Cloverton

Leisure and Sporting Clubs

Future Kalkallo North Sports Reserve
 Kalkallo Sports Reserve
 Proposed Sports Ground

Legend

- Cloverton
- Sold Lots
- Proposed Medium Density
- Proposed Retirement Living
- Proposed Stockland Halcyon
- Health & Community Facilities
- Education
- Retail/Commercial
- Future Cloverton City

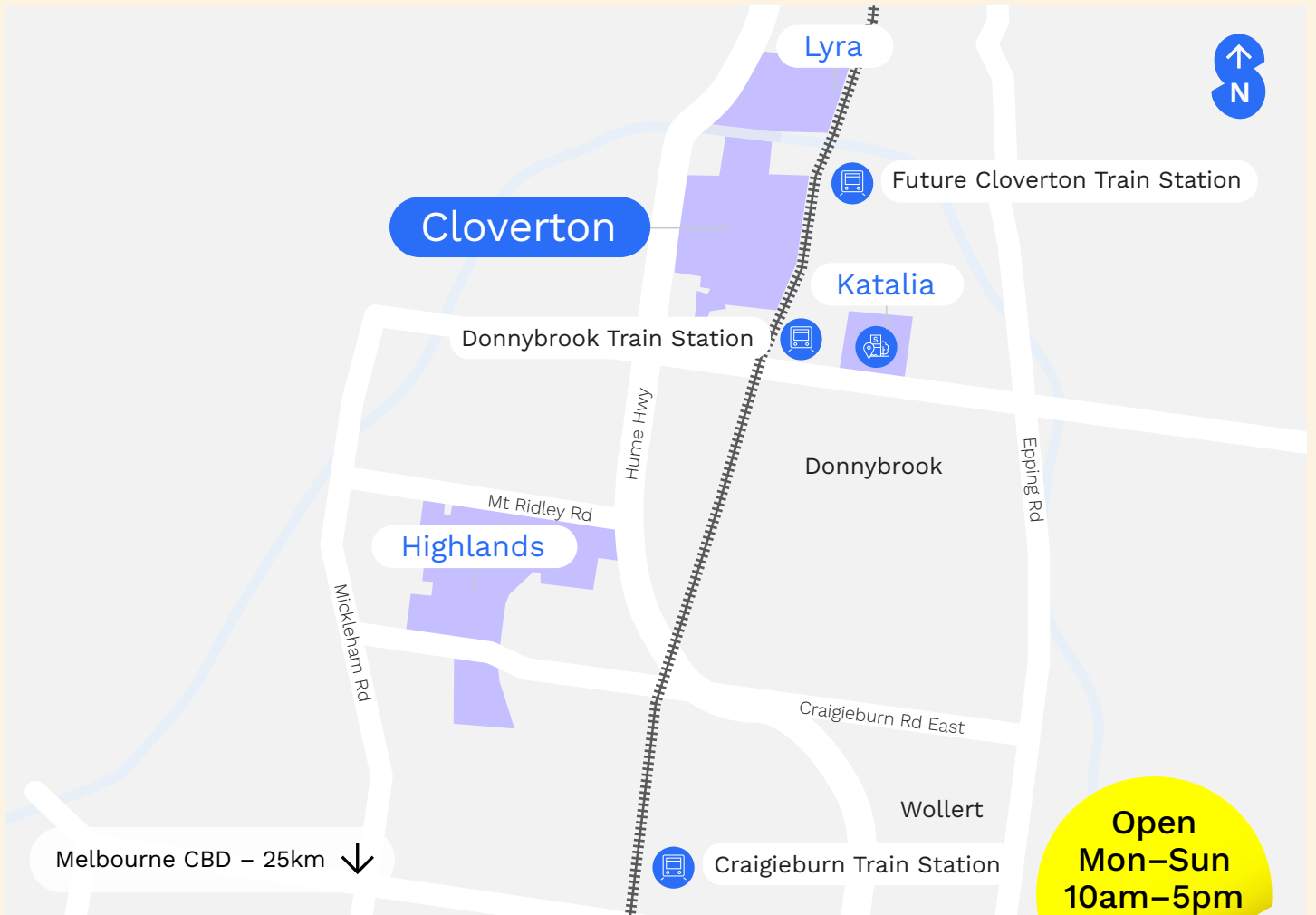
This map is provided solely for the purpose of providing an impression of the development called "Cloverton", as well as the approximate location for existing and proposed facilities, amenities, services or destinations, and the contents are not intended to be used for any other purpose. Any statements of distance or size are approximate and for indicative purposes only. Stockland makes no representations and gives no warranties about the future developmental potential of the site, or the current or future location or existence of any facilities, amenities, services or destinations. All images and statements are based on information available to, and the intention of, Stockland at the time of creation of this map (April 2023) and may change due to future circumstances. This map is not a legally binding obligation or warranty by Stockland. Stockland accepts no liability for any loss or damage arising as a result of any reliance on this brochure or its contents.

**Cloverton Sales
& Information Centre**

Corner Dwyer Street & Design Way,
Kalkallo Vic 3064

P: 13 52 63

stockland.com.au/cloverton



Scan for website

This brochure is provided solely for the purpose of providing an impression of the development called Stockland Cloverton, as well as the approximate location of existing and proposed third party infrastructure, facilities, amenities, services and destinations, and the contents are not intended to be used for any other purpose. Stockland makes no representations and gives no warranties about the future development potential of the site, or the current or future location or existence of any facilities, amenities, services or destinations. Any statements of distance or size are approximate and for indicative purposes only. All details, images and statements are based on information available to, and the intention of, Stockland at the time of creation of this brochure (April 2023) and may change due to future circumstances. This brochure is not a legally binding obligation on or warranty by Stockland. Stockland accepts no liability for any loss or damage arising as a result of any reliance on this brochure or its contents.