

# *Highlands*

*Your place to  
have it all now*



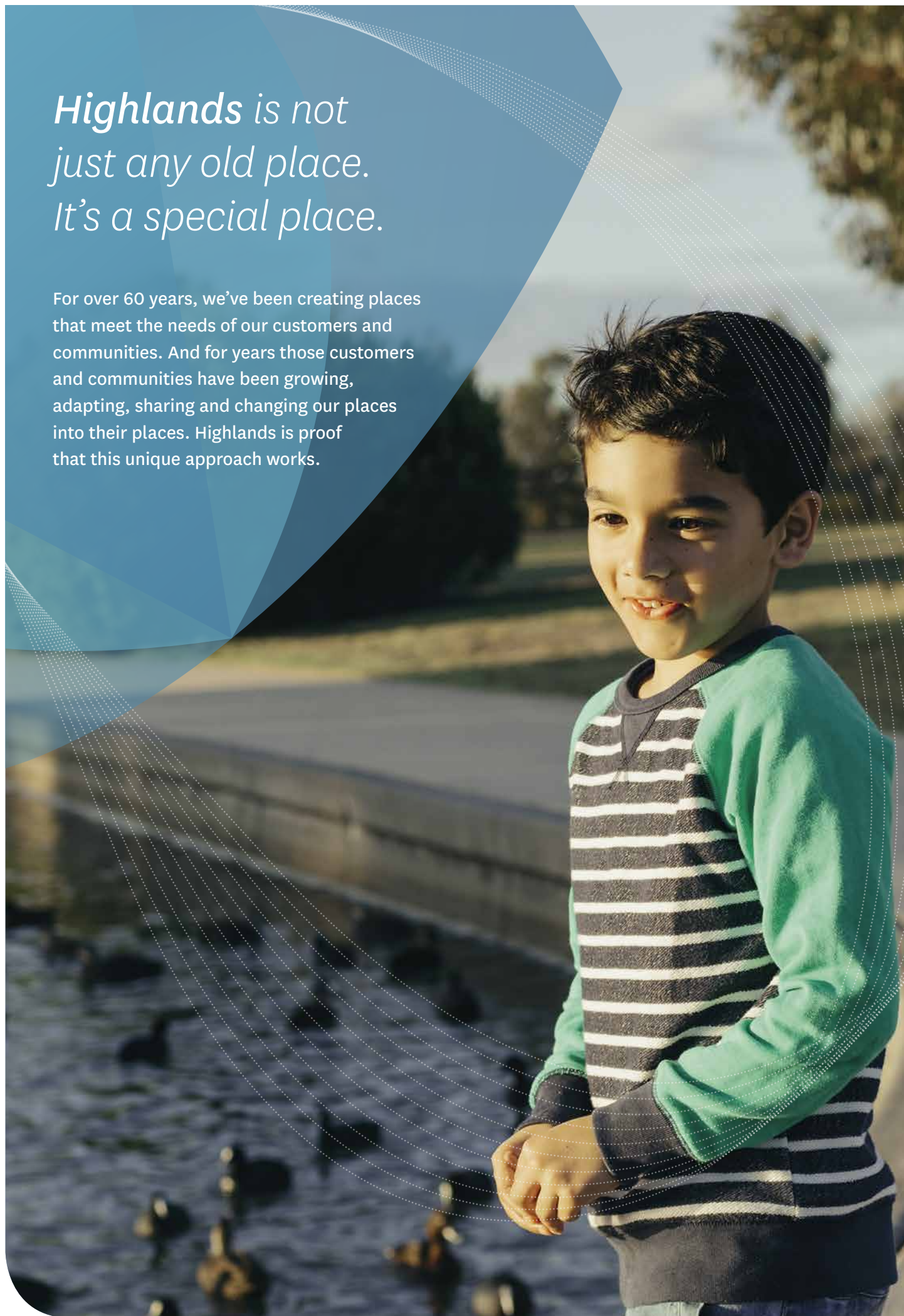
**Stockland**  
*it's your place*

**highlands**



*Highlands is not  
just any old place.  
It's a special place.*

For over 60 years, we've been creating places that meet the needs of our customers and communities. And for years those customers and communities have been growing, adapting, sharing and changing our places into their places. Highlands is proof that this unique approach works.



# Ten reasons to make Highlands *my place*

## 01. A COMMUNITY YOU'LL BE PROUD TO CALL HOME

Highlanders love where they live. It's an award-winning masterplanned community with more than 10,000 locals who love living here, and it's the sort of place where the kids will make friends for life. Live in a modern community that already feels like an established neighbourhood.

## 02. A PLACE WHERE A GOOD EDUCATION IS ITS OWN REWARD

At Highlands we believe that a good education is the key to success and we aim to provide the best educational facilities for all ages. Highlanders have access to some of the area's best children's and adult's education, while job-seekers can get easy access to local training and job opportunities thanks to Hume Council employment programs.

## 03. WHERE KIDS GET THE BEST START IN LIFE

Your children deserve the best possible start in life and they will love Highlands' wide-open spaces, a dozen cycling and walking tracks and the Golden Sun Moth Adventure Playground. The \$17 million Hume Global Learning Centre and award-winning Craigieburn Library run free programs and activities for all ages. There are a number of quality trusted childcares throughout the community.

## 04. A PLACE WHERE NEIGHBOURS LOOK OUT FOR EACH OTHER

At Highlands, your neighbour is not just the person living next door, but also a friend who looks out for you. With regular community events and programs such as parkrun, Live Life Get Active and a dedicated community residents group, you will be a part of the unique benefits only Highlanders enjoy.

## 05. A PLACE YOU'LL NEVER NEED TO LEAVE

Highlands is not just full of entertainment options, it's a destination for entertainment. Why not take the night off from cooking and meet friends & family for a bistro-quality dinner at Highlands Hotel & Entertainment Complex, or with a picturesque view of the Highlands Lake, Waterside Café is the perfect place for brunch, lunch and coffee. Enjoy easy family entertainment with Village Cinemas and Timeout Arcade close by.

## 06. WHERE TOMORROW'S SPORTING HEROES ARE BORN

Our future sporting stars are developed at Highlands' many sporting and leisure facilities. The Highgate Recreation Reserve oval is not only the size of the MCG and is home to the Calder Cannons, the regional AFL representative group. Highlands is home to a new Hockey Centre. Popular Hume Tennis Centre features 16 world-class tennis courts, multi-purpose community meeting rooms and plays host to world-level tennis events. Splash Aqua Park with 50m indoor pools and mega waterslides will be a hit with the kids.

## 07. A PLACE THAT CARES ABOUT THE FUTURE

Our commitment to your future is about taking care of our environment and creating shared value for everyone and that includes you. Helping the environment is more than just being green at Highlands. Local projects including recycled water, natural grasslands, conservation areas and regeneration of local creeks and waterways are all in place, to keep your neighbourhood green all year round. Sustainable Park at Highlands is further proof of residents' desire for a healthy, active and sustainable community.

## 08. WHERE YOUR WELLBEING IS YOUR GREATEST WEALTH

A healthy community is a happy community and Highlands provides the very best in health and wellbeing services. As well as your local GPs and health care professionals, locals can visit Primary Health Craigieburn with dental, pathology and x-ray facilities. Community centres run a range of programs to help your family keep healthy and happy.

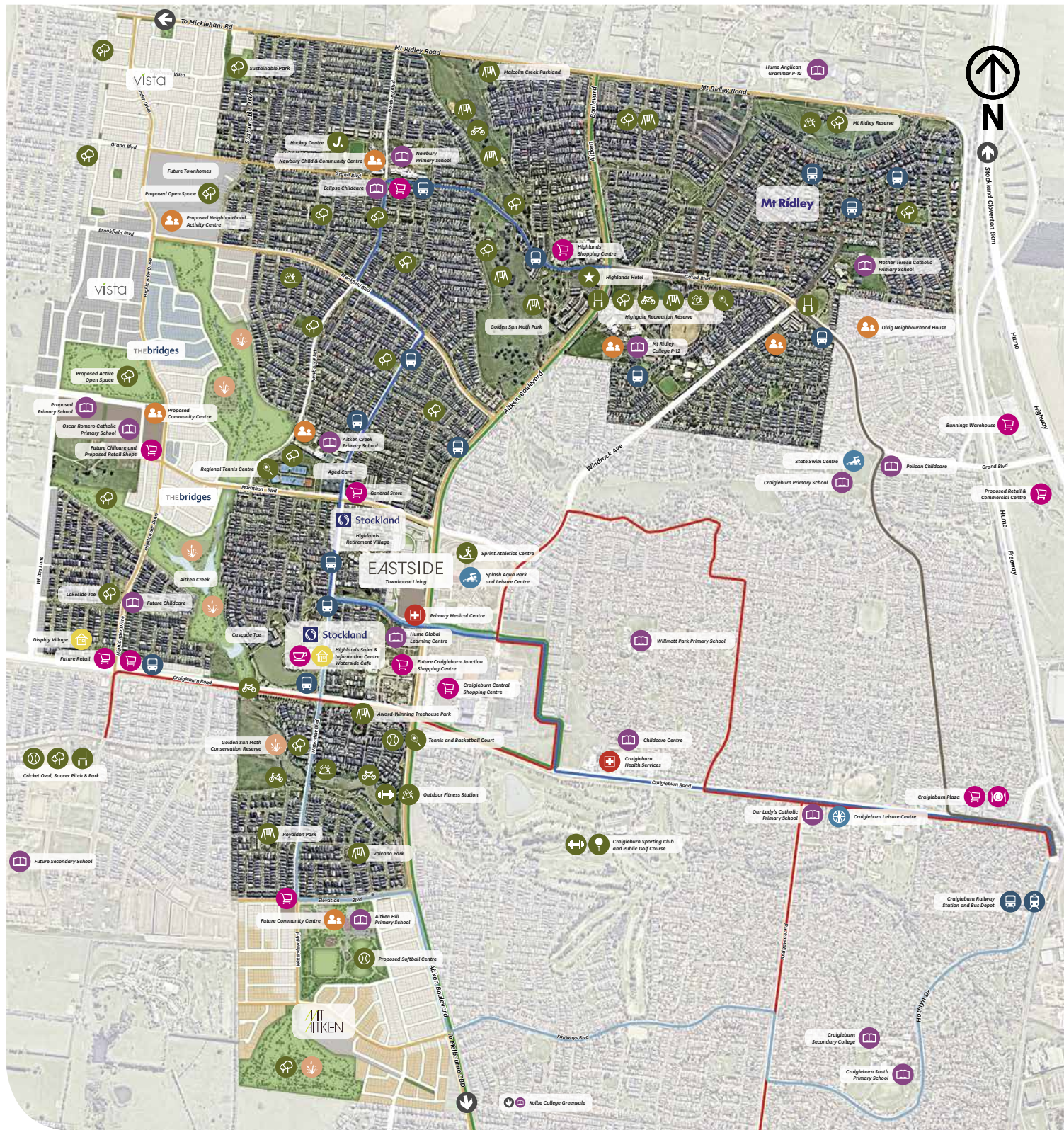
## 09. WHERE YOU CAN SET YOURSELF UP FOR THE FUTURE

Have confidence that you're setting yourself and your family up for the future. Design Guidelines and careful community planning help protect you and your family's investment. Later in life, there's no reason to move far from your friends and family with the Highlands Retirement Village there, to help you enjoy your 'golden years'.

## 10. WHERE YOUR HOME IS YOUR CASTLE

Becoming a Highlander means seeing your brand new dream home, designed just the way you want it, built by Australia's leading home builders. Get all your home building and decorating inspiration at Highlands Display Village just down the road, and speak to experts who can create the perfect home for you.





- SHOPPING & AMENITIES**
- Highlands Shopping Centre
  - Entertainment Complex
  - Mt Aitken Proposed Retail
  - General Store
  - Bunnings Warehouse
  - Craigieburn Central Shopping Centre
  - Craigieburn Plaza
  - Waterside Cafe
  - Highlands Hotel
- MEDICAL CENTRE**
- Craigieburn Health Services
  - Northern Hospital - 10min
- LEISURE CENTRES**
- Splash Aqua Park and Leisure Centre
  - Craigieburn Leisure Centre

- PUBLIC TRANSPORT & ACCESS**
- Melbourne CBD - 32kms
  - Melbourne Airport - 10mins
  - Craigieburn Railway Station
  - Mickleham Road - 1min
  - Greenvale Shopping Centre - 8min
  - Tullamarine Freeway - 10min
- DISPLAY VILLAGE**
- Highlands Land Sales and Information Centre
  - Highlands Display Village
- COMMUNITY CENTRE**
- Hume Global Learning Centre
  - Newbury Child & Community Centre
  - Craigieburn Child & Family Centre
  - YMCA Early Learning Centre

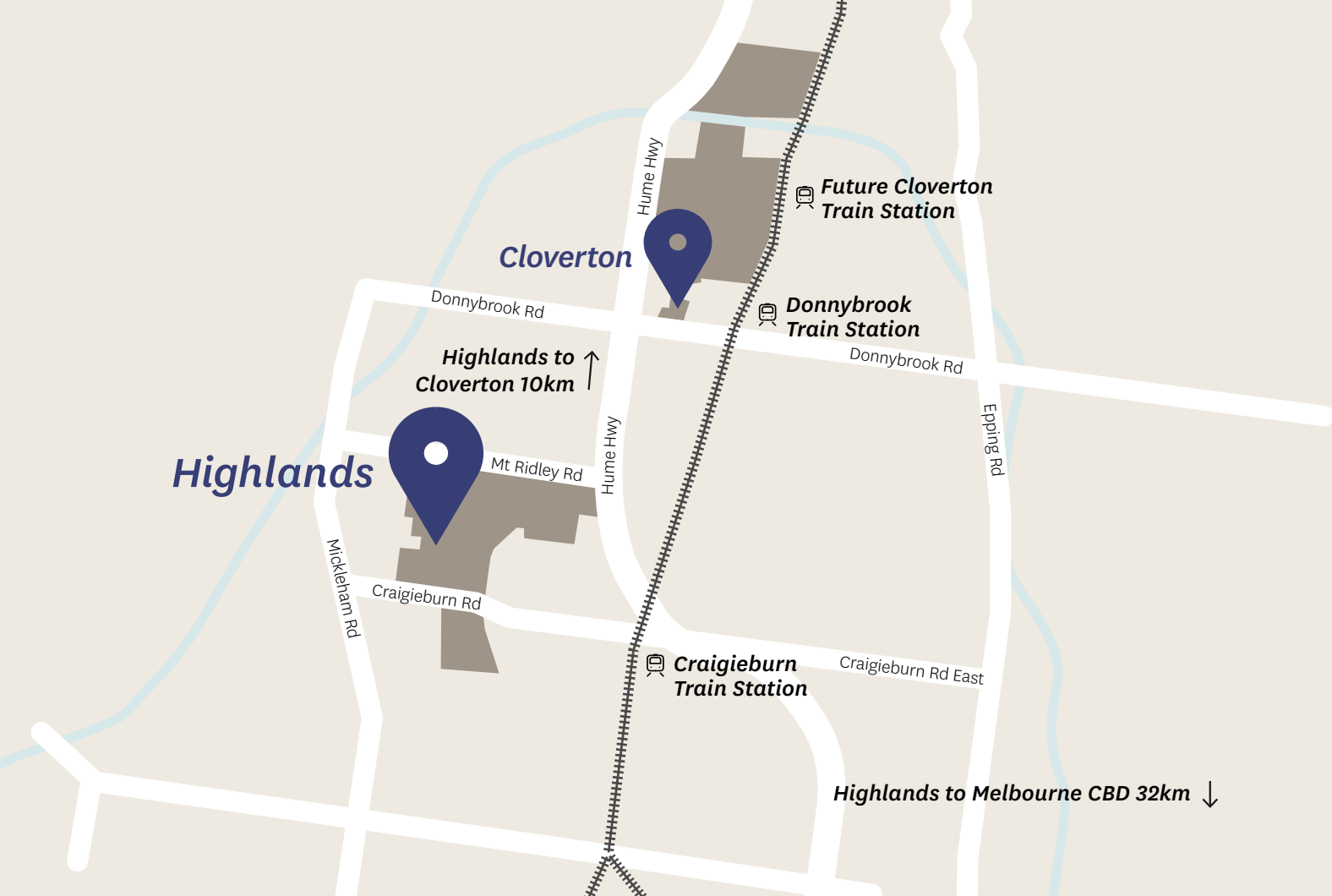
- PARKS & OPEN SPACE**
- 20 Parks
  - 3 Recreational Reserves
  - Hockey Centre
  - 3 Regional Sports Fields
  - Malcolm Creek Major Recreation Parkland & Play Spaces
  - Highgate Recreation Reserve & MCG-sized North Melbourne Training Ground
  - Award-winning Golden Sun Moth Park
  - Hume Tennis & Community Centre
  - Award-winning Treehouse Park
  - Tennis & Basketball Court
  - Outdoor Fitness Station
  - Craigieburn Sporting Club & Public Golf Course

- EDUCATION & CHILDCARE**
- 2 Childcare Centres
  - 5 Primary Schools
  - Hume Anglican Grammar
  - Mt Ridley P-12 School
  - Global Learning Centre
  - Pelican Childcare
  - Goodstart Early Learning
  - Craigieburn Primary School
  - Willmott Park Primary School
  - Our Lady's Catholic Primary School
  - Craigieburn South Primary School
  - Aitken College - 9min
  - Eclipse Childcare
  - Newbury Primary School
- CONSERVATION**
- Golden Sun Moth Conservation Reserve

#### LEGEND

- MT AITKEN | FOR SALE
- VISTA | FOR SALE
- THE BRIDGES | FOR SALE
- Sold
- ROUTE 529  
Craigieburn Train Station to Craigieburn North (via Craigieburn Central)
- ROUTE 533  
Craigieburn Train Station to Craigieburn North (via Craigieburn Central)
- ROUTE 537  
Craigieburn Train Station to Craigieburn West (via Craigieburn Central)
- ROUTE 528  
Craigieburn Train Station to Craigieburn West (via Craigieburn Central)
- ROUTE 541  
Broadmeadows Station to Craigieburn North (via Craigieburn Central SC)
- PROPOSED ROUTES  
(in accordance with approved planning documents; subject to Public Transport Victoria funding and approval)





# Highlands Sales & Information Centre

1 North Shore Drive, Craigieburn

P: 9303 0000

[stockland.com.au/highlands](http://stockland.com.au/highlands)

[facebook.com/highlandscraigieburn](https://facebook.com/highlandscraigieburn)

This plan is provided solely for the purpose of providing an impression of the proposed development called 'Highlands' as well as the approximate location of existing and proposed third party facilities, services or destinations and is not intended to be used for any other purpose. Stockland does not make any representation or give any warranty in relation to the future development of the site or the current or future location or existence of any facilities, services or destinations. The plan is based on the intention of, and information available to, Stockland at the time of creation of the plan and details may change due to future circumstances. Any indications of distance or size are approximate and for indicative purposes only, and are not to scale. The plan is not a legally binding obligation on or warranty by Stockland. Stockland accepts no liability for any loss or damage arising as a result of any reliance on this plan or its contents.



**Stockland**  
*it's your place*

**highlands**