

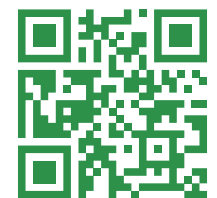
Thrive
BERWICK

Housing Catalogue



Design your
home at Thrive

Scan the QR code to go to our
Home Visualiser tool and see what
your home could look like at Thrive.



Low maintenance for easy living

Make the move to Thrive Berwick, the Community designed for over-50s and delivered by Stockland, Australia's most trusted developer.

To start with, there are ten house designs to choose from. Generously sized, thoughtfully appointed and built to flow seamlessly from private yard space, through open-plan living areas and out onto the front patio areas, they all are designed by award-winning architects DC8 Studio.

All homes have a minimum 6-star energy rating, making them cost efficient and comfortable to live in year-round.

There is also an extensive range of fixed - price upgrades from Solar Panels to epoxy floor coating in the garage and most things in between.

The well-thought out floor plans allow plenty of natural light into the homes and have been designed to take advantage of the Melbourne climate all year round.





Naturally-inspired, luxury living

Back yards and front decks are designed to be as easy to maintain and ready to enjoy as possible. Astroturf gardens replace the need for a lawn mower and are situated outside windows to give you that luxurious 'surrounded by green space' feeling.

The tree-lined streets and landscaped patios provide a lush, inviting streetscape – and the perfect gathering place for family, friends and neighbours.

Stockland's proud and long history of developing desirable, award-winning communities has allowed our Thrive team to develop a housing range that is not only affordable and offers great value for money but also reflects the way over-50s want to live down to the last detail.

Peace of mind built into every detail

Every home comes with brand-new, high quality inclusions – like Fisher and Paykel kitchenware and Caesarstone bench tops – that are sure to provide years of hassle-free use and enjoyment.

And there is the option to upgrade most inclusions to suit your taste and budget, so your new home is unique to you.

All homes feature: fully tiled bathrooms and luxurious ensuites, built-in robes, dishwasher, optic fibre to the home for fast broadband, an abundance of storage, LED downlights, low-maintenance astroturf backyard, passive solar design to maximise natural light to living and outdoor areas and much, much more.

Being brand new means no more renovations, no fixing up and no worrying about breakdowns. Each home has a 10-year Structural Warranty. And every appliance comes with a 5-year warranty.





Typical landscaping plan



Otway floor plan shown. Landscaping varies by floorplan.^

Legend

1. Full Front Garden

Fully landscaped front garden

2. Street Tree

A feature tree is planted at the front of each home to assist in creating tree lined, shaded streets throughout

3. Front Verandah

Every home has a useable front verandah to watch the day go by or meet your neighbours

4. Visitors Welcome

Your minimum 5.5m long exposed aggregate driveway will offer sufficient space for short-term visitor car parking outside your home

5. No Mowing

No need to own a mower! High quality astroturf to rear yard

6. Garden Beds

Timber edged garden beds provided to all backyards, ready for immediate planting

7. Good Neighbour Fence

1.8m high Colourbond Boundary Fence

8. Smart Service Locations

Air-conditioner condensers located away from main view lines

9. Clothesline Hidden From Views

Wall mounted clothesline located away from internal views where possible

10. Large Main Bedroom

Private main bedroom with tiled ensuite and walk-in robes

11. Spacious Kitchens

Fisher & Paykel appliances, Caesarstone benchtops and an abundance of storage

12. Outdoor Living

Rear deck connected to internal living areas

13. Open Plan Living

Open plan living area flows seamlessly through to a generous covered outdoor alfresco deck

^ The illustrations and floor plan shown are indicative visual aids only. Stockland makes no warranty in relation to the accuracy of the dimensions or the location or availability of the fixtures and fittings shown on the plan. The dimensions are not based on actual measurements and no reliance should be placed on them. Furniture and plants are not included.

Freedom to choose...

You'll enjoy the flexibility of choosing from a range of architecturally designed, low-maintenance homes. There are four types of site, ten house designs and three different facades to choose from.

Then there's the interior – where you are literally spoilt for choice.

External Colour Schemes



Contrasting

The bold use of darker and lighter shades in combination creates a contemporary, urban look that will turn heads.



Light & Bright

Light & Bright takes inspiration from Australia's glorious coastline. These light and airy hues reflect the natural colours and textures of sand, coral, shells and driftwood for a cool, calming exterior.



Warm & Earthy

The fresh, rugged natural tones of Warm & Earthy capture the essence of rustic living to create a warm, welcoming impression on approach – which is continued throughout.

...time to flourish

With a choice of two interior colour schemes, a selection of fixtures, fittings and more – you can create your new home to perfectly suit your new lifestyle.

Internal Colour Schemes



Misty Morning

Add a gentle aura of sophistication and under-stated elegance to your home with the subtle, darker hues and cool contrast of the Misty Morning colour scheme.



Sandy Shores

Capture your coastal living dream with the Sandy Shores colour scheme, featuring cool timber flooring, delicately marbled white Ceasarstone benchtops and more.

Find the right fit for you

Create your space to flourish at Thrive Berwick



STEP 1

Choose your land

With a range of lot sizes to choose from you can secure a site that is just right for you. A weekly site fee is payable once you move in and ensures the upkeep and management of the Community and clubhouse.



STEP 2

Choose your home

Select a home to suit your lifestyle from ten different floor plans. Smart design means space is maximised for you to enjoy plenty of storage, entertaining and quality inclusions.



STEP 3

Personalise your home

Finally, choose from a range of upgrades and colour schemes as well as one of three beautiful facades. Then start planning your move and styling that makes your home your own.





The Range

Alpine

Facade: Hip
Scheme: Light & Bright

Alpine

Facade: Gable
Scheme: Light & Bright

Otway

Facade: Hip
Scheme: Contrasting



Flinders

Facade: Gable

Scheme: Light & Bright

Whitsunday

Facade: Double Gable

Scheme: Warm & Earthy



The Range

Whitsunday

Facade: Double Gable
Scheme: Light & Bright

Alpine

Facade: Hip
Scheme: Contrasting

Tasman

Facade: Gable
Scheme: Warm & Earthy



Yarra

Facade: Hip

Scheme: Contrasting

Cathedral

Facade: Gable

Scheme: Warm & Earthy

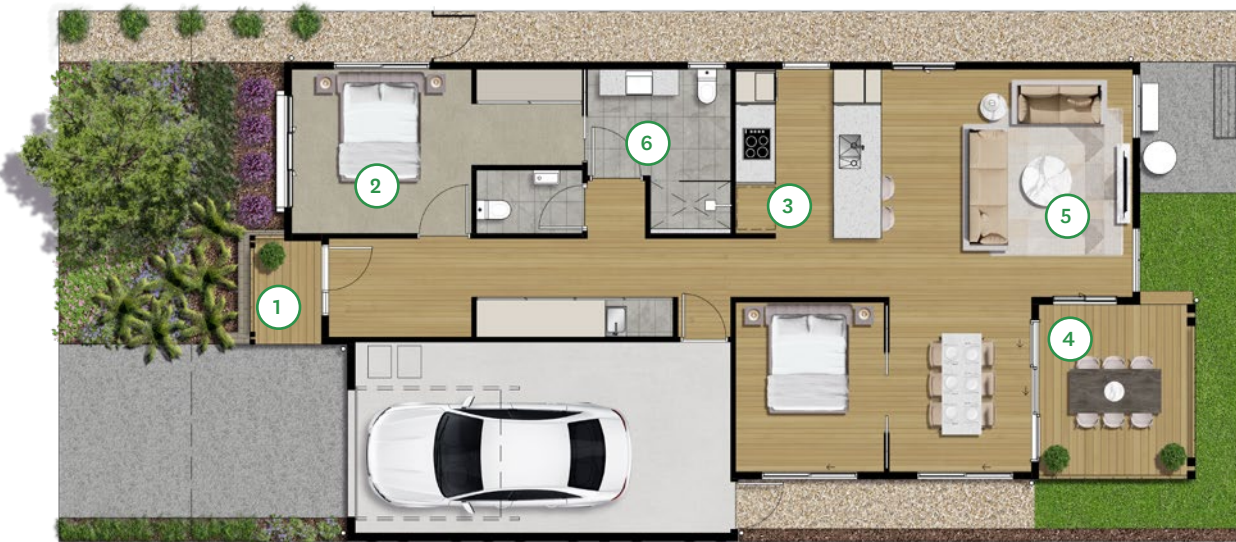


Lot style:

Alpine

The Alpine is an adaptable two bedroom, one bathroom plus powder room home, offering the perfect mix of affordability, luxury and function. With an open-plan kitchen, living and dining area, plus a large multi-purpose room that could become a second bedroom, additional living space or your home office – the possibilities are endless. The rear decked alfresco area opens up to extend the indoor/outdoor living experience and maximise those warm summer evenings and sunny winter mornings.

Alpine



TYPICAL FLOORPLAN



HOUSE AREA

Living Area	97m ²
Garage Area	27m ²
Outdoor Dining Area	10m ²
Front Verandah Area	3m ²
Total Area	137m ²

This document is supplied solely for the purpose of providing an indicative floor plan and facade of the nominated home type that may be constructed within the proposed Thrive Community at Minta and is not intended to be used for any other purpose. Subject to the lot selected, the floor plan orientation may change. The details shown in or with this plan are based on information available to Stockland at the time of creation (September 2021). The living areas specified are approximate only. Furniture not included.





1. Large front patio and separate footpath entry to home
2. Private main bedroom with tiled ensuite and walk-in robes
3. Fisher & Paykel appliances, Caesarstone benchtops and an abundance of storage

4. Rear deck connected to internal living areas
5. Open plan living area flows seamlessly through to a generous covered outdoor alfresco deck
6. Spacious bathroom and powder room

Alpine facades

Facade: **Hip**
Scheme: **Contrasting**



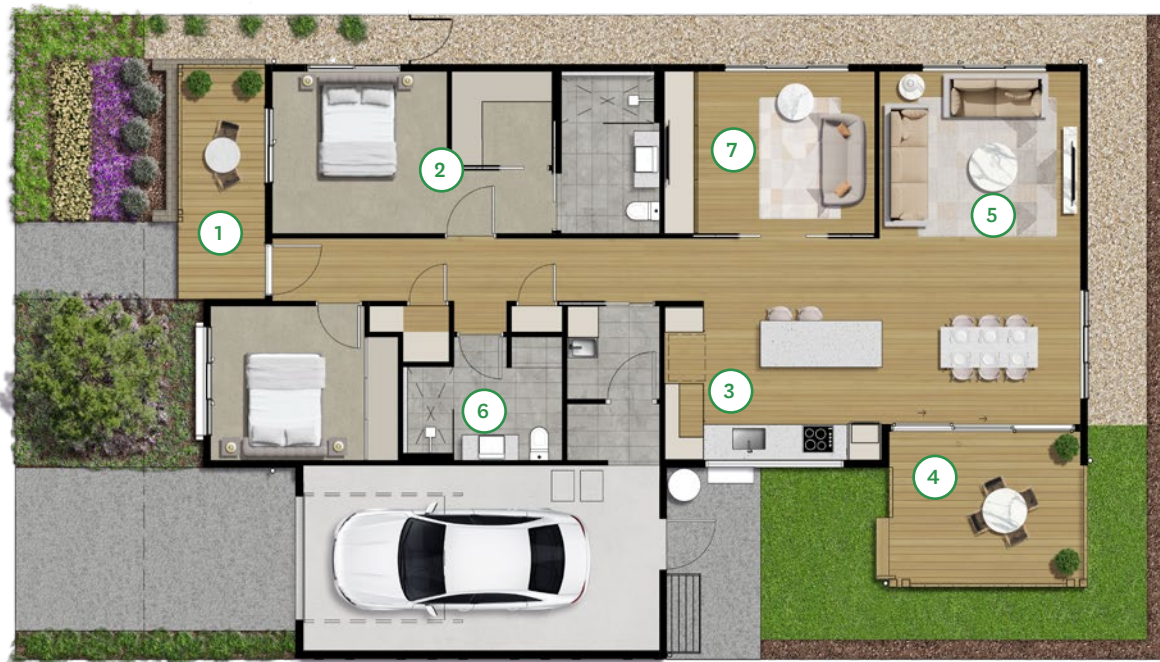
	Scheme: Contrasting	Scheme: Light & Bright	Scheme: Warm & Earthy
Facade: Double Gable			
Facade: Gable			
Facade: Hip			

Lot style:

Bribie

Dominated by the impressive kitchen's central island bench overlooking the living and dining areas, the Bribie is an entertainer's dream. The multi-purpose room also opens up onto the open-plan living areas, and the dining area opens up onto the rear decking to create a delightfully free-flowing indoor/outdoor living experience. Both bedrooms boast views out onto the beautifully landscaped streetscape for a great way to start every day.

Bribie



TYPICAL FLOORPLAN



NEED MORE GARAGE SPACE?

Optional 1.5 and 2 garage spaces available on select sites.

HOUSE AREA

Living Area	126m ²
Garage Area	27m ²
Outdoor Dining Area	12m ²
Front Verandah Area	8m ²
Total Area	173m²

This document is supplied solely for the purpose of providing an indicative floor plan and facade of the nominated home type that may be constructed within the proposed Thrive Community at Minta and is not intended to be used for any other purpose. Subject to the lot selected, the floor plan orientation may change. The details shown in or with this plan are based on information available to Stockland at the time of creation (September 2021). The living areas specified are approximate only. Furniture not included.

1. Spacious front verandah to watch the day go by or meet your neighbours
2. Private main bedroom with tiled ensuite and walk-in robes
3. Fisher & Paykel appliances, Caesarstone benchtops and an abundance of storage
4. Rear deck connected to internal living areas

5. Open plan living area flows seamlessly through to a generous covered outdoor alfresco deck
6. Spacious tiled bathroom
7. Multi-purpose room perfect for a third bedroom, home office, theatre room or any other uses you can imagine

Bribie facades

Facade: Double Gable
Scheme: Light & Bright



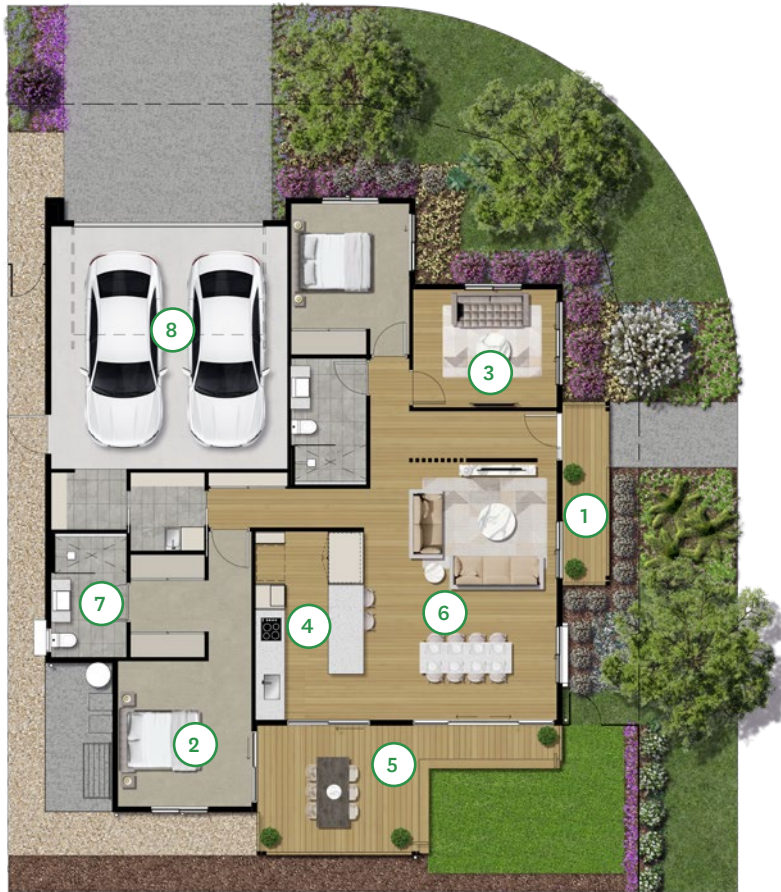
	Scheme: Contrasting	Scheme: Light & Bright	Scheme: Warm & Earthy
Facade: Double Gable			
Facade: Gable			
Facade: Hip			

Lot style:

Cathedral

The Cathedral offers the best of every world. The generous master bedroom offers ultimate privacy and luxury with ensuite bathroom and walk-in robes, plus access to the secluded rear deck. Then there's the 'everyone's invited' open-plan possibilities offered by the kitchen, dining and living all opening up onto the private alfresco. And to top it all off, you can curl up with a book in the sun-drenched multi-purpose room, and enjoy some quality 'me-time'.

Cathedral



TYPICAL FLOORPLAN



HOUSE AREA

Living Area	130m ²
Garage Area	39m ²
Outdoor Dining Area	17m ²
Front Verandah Area	6m ²
Total Area	192m²








This document is supplied solely for the purpose of providing an indicative floor plan and facade of the nominated home type that may be constructed within the proposed Thrive Community at Minta and is not intended to be used for any other purpose. Subject to the lot selected, the floor plan orientation may change. The details shown in or with this plan are based on information available to Stockland at the time of creation (September 2021). The living areas specified are approximate only. Furniture not included.

1. Large front patio and separate footpath entry to home
2. Private main bedroom with tiled ensuite and walk-in robes
3. Multi-purpose room perfect for a third bedroom, home office, theatre room or any other uses you can imagine
4. Fisher & Paykel appliances, Caesarstone benchtops and an abundance of storage
5. Corner living with private alfresco, connected to the open-plan living, dining and kitchen areas
6. Open plan living area flows seamlessly through to a generous covered outdoor alfresco deck
7. Spacious tiled bathroom
8. Double garage design

Cathedral facades

Facade: Double Gable
Scheme: Light & Bright



	Scheme: Contrasting	Scheme: Light & Bright	Scheme: Warm & Earthy
Facade: Double Gable			
Facade: Gable			
Facade: Hip			

Lot style:

Flinders

The Flinders, with its double car garage, capitalises on the northern orientation to maximise the natural light in the open-plan kitchen and entertaining areas that flow harmoniously out into the alfresco space for the ultimate indoor/outdoor lifestyle. And at the end of busy day, the master bedroom, boasting a large walk-in robe and ensuite – and with views out onto the alfresco – is truly fit for a king or queen.

Flinders

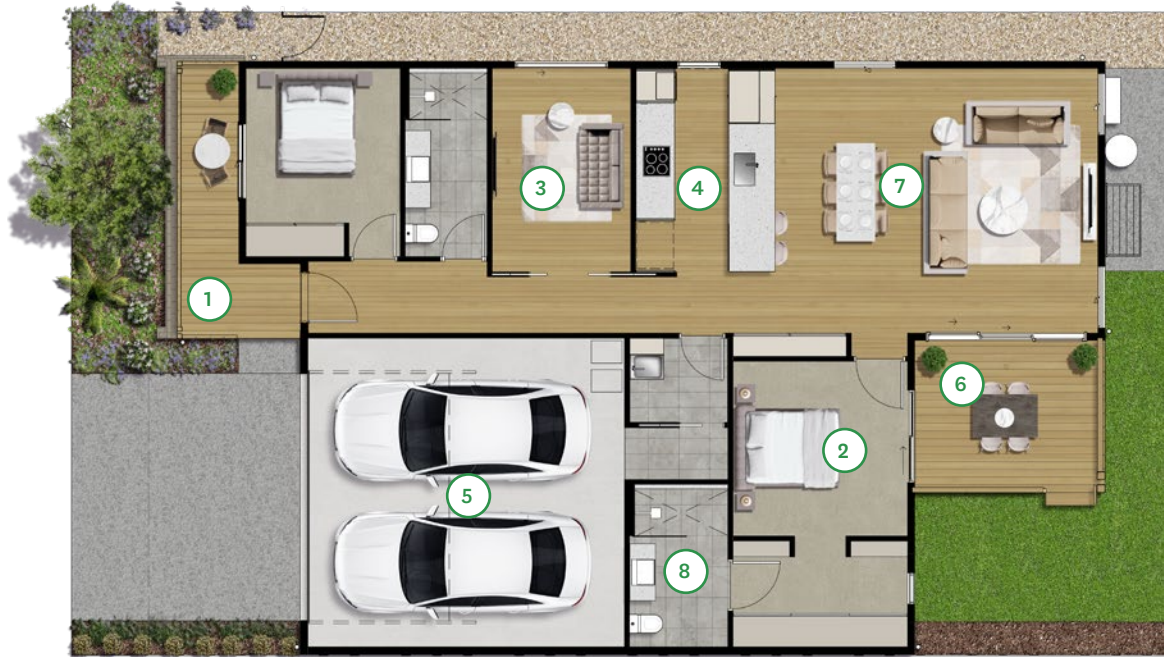
TYPICAL FLOORPLAN



HOUSE AREA

Living Area	124m ²
Garage Area	39m ²
Outdoor Dining Area	8m ²
Front Verandah Area	11m ²
Total Area	182m ²

This document is supplied solely for the purpose of providing an indicative floor plan and facade of the nominated home type that may be constructed within the proposed Thrive Community at Minta and is not intended to be used for any other purpose. Subject to the lot selected, the floor plan orientation may change. The details shown in or with this plan are based on information available to Stockland at the time of creation (September 2021). The living areas specified are approximate only. Furniture not included.







1. Spacious front verandah to watch the day go by or meet your neighbours
2. Private main bedroom with tiled ensuite and walk-in robes
3. Multi-purpose room perfect for a home office, theatre room or any other uses you can imagine
4. Fisher & Paykel appliances, Caesarstone benchtops and an abundance of storage

5. Double garage design
6. Rear deck connected to internal living areas
7. Open plan living area flows seamlessly through to a generous covered outdoor alfresco deck
8. Spacious tiled bathroom

Flinders facades

Facade: **Gable**
Scheme: **Contrasting**



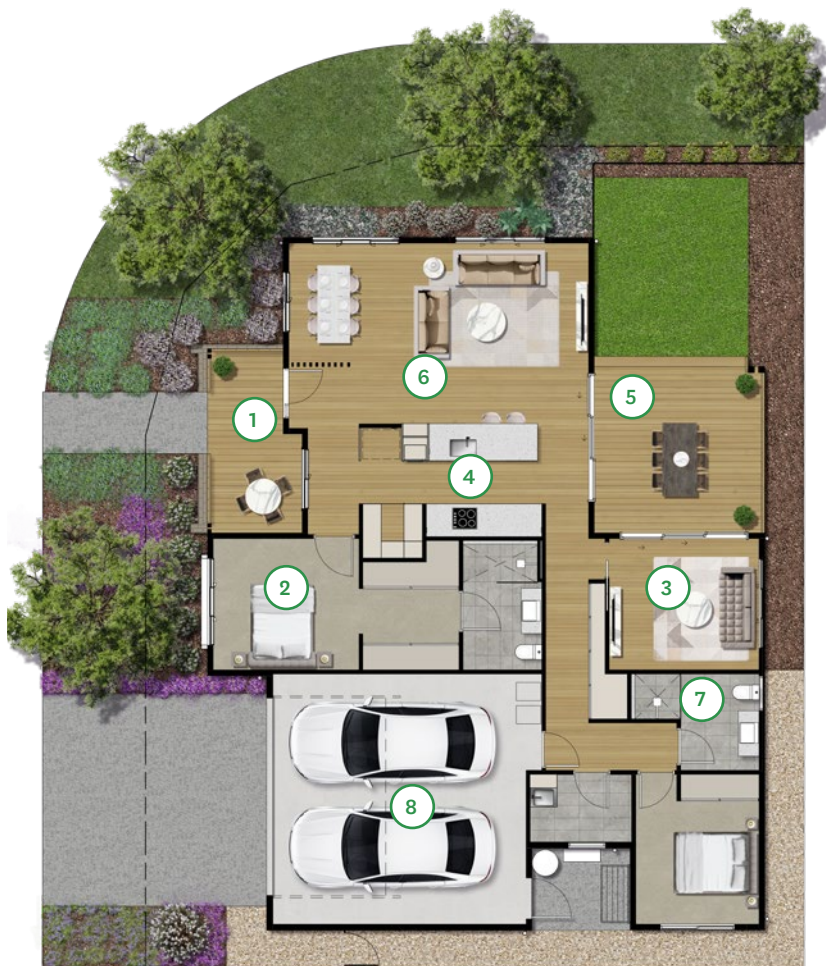
	Scheme: Contrasting	Scheme: Light & Bright	Scheme: Warm & Earthy
Facade: Gable			
Facade: Hip			

Lot style:

Heathcote

The Heathcote is the jewel in the crown of the Thrive Berwick selection of homes. Boasting an expansive main bedroom with views onto the streetscape, a statement kitchen with a spacious butler's pantry, and separate multi-purpose room opening out onto the deck – this really is the envy of the range. Plus, the front patio provides great street appeal and offers ample space to sit and enjoy your morning coffee, or evening wine – or both.

Heathcote



TYPICAL FLOORPLAN



HOUSE AREA

Living Area	130m ²
Garage Area	40m ²
Outdoor Dining Area	17m ²
Front Verandah Area	9m ²
Total Area	196m²

This document is supplied solely for the purpose of providing an indicative floor plan and facade of the nominated home type that may be constructed within the proposed Thrive Community at Minta and is not intended to be used for any other purpose. Subject to the lot selected, the floor plan orientation may change. The details shown in or with this plan are based on information available to Stockland at the time of creation (September 2021). The living areas specified are approximate only. Furniture not included.






1. Spacious front verandah to watch the day go by or meet your neighbours
2. Private main bedroom with tiled ensuite and walk-in robes
3. Multi-purpose room perfect for a third bedroom, home office, theatre room or any other uses you can imagine
4. Fisher & Paykel appliances, Caesarstone benchtops and an abundance of storage

5. Corner living with private alfresco, connected to the open-plan living, dining and kitchen areas
6. Open plan living area flows seamlessly through to a generous covered outdoor alfresco deck
7. Spacious tiled bathroom
8. Double garage design

Heathcote facades

Facade: **Hip**
Scheme: **Warm & Earthy**



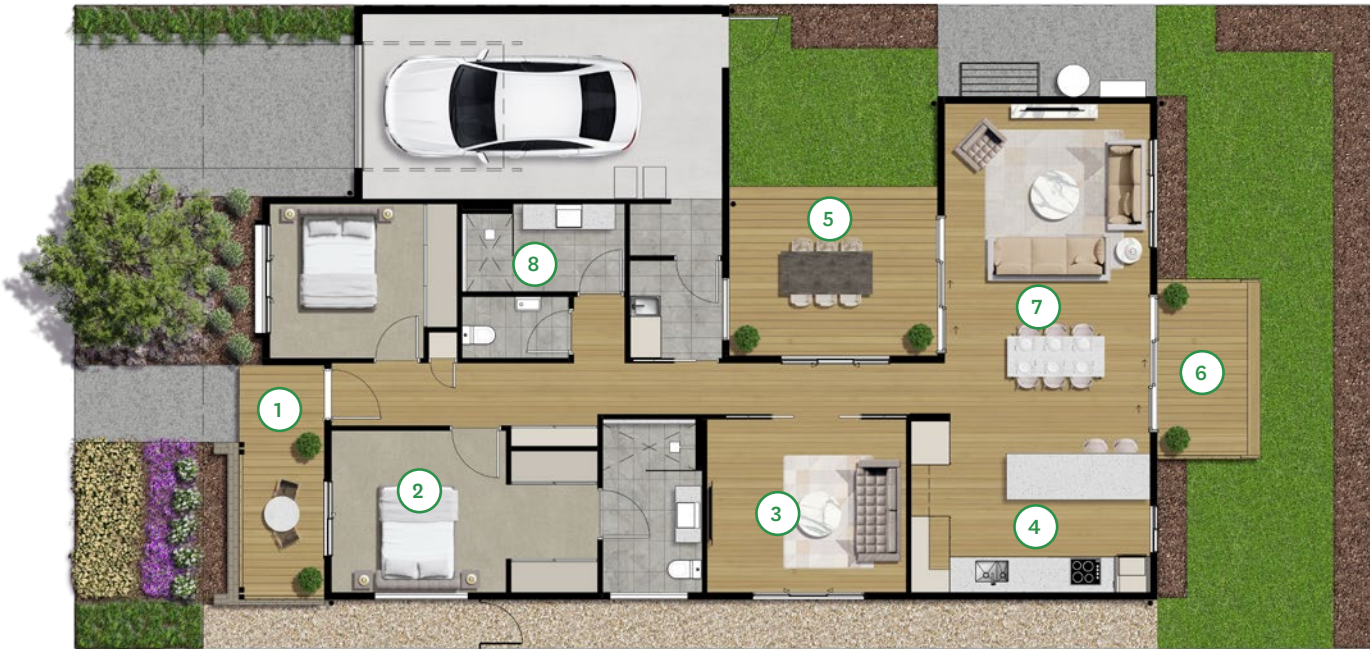
	Scheme: Contrasting	Scheme: Light & Bright	Scheme: Warm & Earthy
Facade: Gable			
Facade: Hip			

Lot style:

Kakadu

The Kakadu's central courtyard and deck is the hero of this design. Both the living areas and multi-purpose room overlook this unique centrepiece, with everything flowing seamlessly from one space to the other to create a unified whole. The generously-appointed master bedroom features walk-in robe and an ensuite, as well as views out onto the front verandah.

Kakadu



TYPICAL FLOORPLAN



NEED MORE GARAGE SPACE?

Optional 1.5 and 2 garage spaces available on select sites.

HOUSE AREA

Living Area	126m ²
Garage Area	27m ²
Outdoor Dining Area & Deck	18m ²
Front Verandah Area	8m ²
Total Area	179m²

This document is supplied solely for the purpose of providing an indicative floor plan and facade of the nominated home type that may be constructed within the proposed Thrive Community at Minta and is not intended to be used for any other purpose. Subject to the lot selected, the floor plan orientation may change. The details shown in or with this plan are based on information available to Stockland at the time of creation (September 2021). The living areas specified are approximate only. Furniture not included.

1. Spacious front verandah to watch the day go by or meet your neighbours
2. Private main bedroom with tiled ensuite and walk-in robes
3. Multi-purpose room perfect for a home office, theatre room or any other uses you can imagine
4. Fisher & Paykel appliances, Caesarstone benchtops and an abundance of storage

5. Private patio
6. Rear deck connected to internal living areas
7. Open plan living area flows seamlessly through to a generous covered outdoor alfresco deck
8. Spacious tiled bathroom

Kakadu facades

Facade: **Gable**
Scheme: **Contrasting**



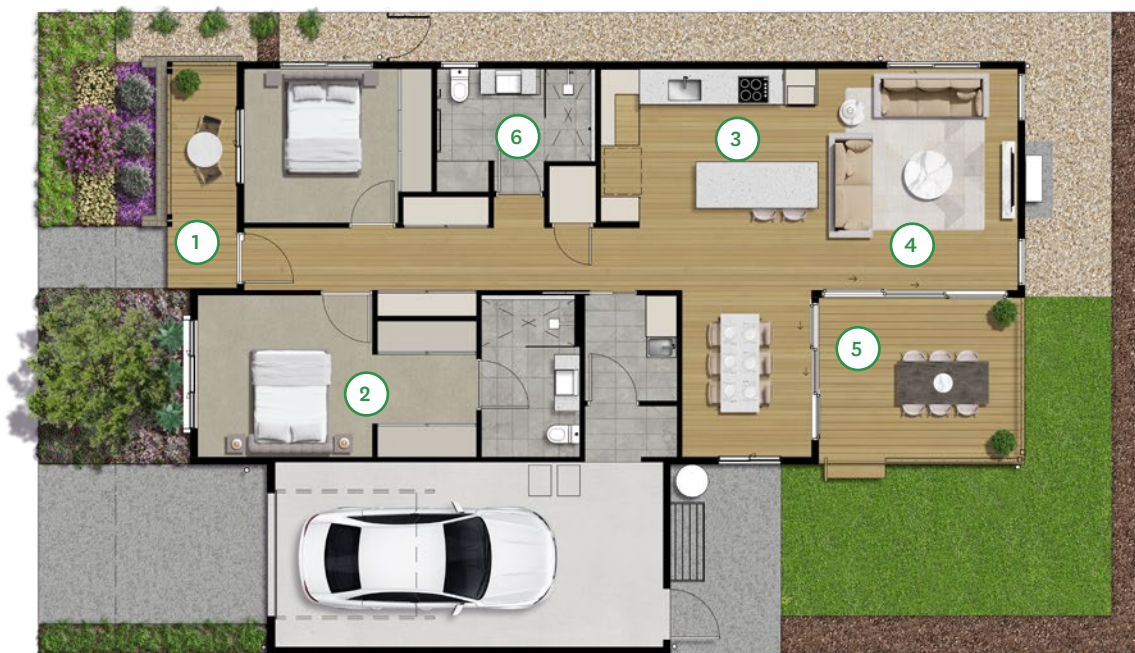
	Scheme: Contrasting	Scheme: Light & Bright	Scheme: Warm & Earthy
Facade: Double Gable			
Facade: Gable			
Facade: Hip			

Lot style:

Otway

The Otway's contemporary design and intelligent use of space offers the same seamless flow between kitchen, dining and indoor/outdoor living as the larger Tasman, but trades the multi-purpose room for a larger second bathroom and extra storage! Ideal for a couple who love entertaining.

Otway



TYPICAL FLOORPLAN



NEED MORE GARAGE SPACE?

Optional 1.5 and 2 garage spaces available on select sites.

HOUSE AREA

Living Area	109m ²
Garage Area	29m ²
Outdoor Dining Area	13m ²
Front Verandah Area	6m ²
Total Area	157m²

This document is supplied solely for the purpose of providing an indicative floor plan and facade of the nominated home type that may be constructed within the proposed Thrive Community at Minta and is not intended to be used for any other purpose. Subject to the lot selected, the floor plan orientation may change. The details shown in or with this plan are based on information available to Stockland at the time of creation (September 2021). The living areas specified are approximate only. Furniture not included.

1. Spacious front verandah to watch the day go by or meet your neighbours
2. Private main bedroom with tiled ensuite and walk-in robes
3. Fisher & Paykel appliances, Caesarstone benchtops and an abundance of storage

4. Open plan living area flows seamlessly through to a generous covered outdoor alfresco deck
5. Rear deck connected to internal living areas
6. Spacious tiled bathroom

Otway facades

Facade: Gable
Scheme: Light & Bright



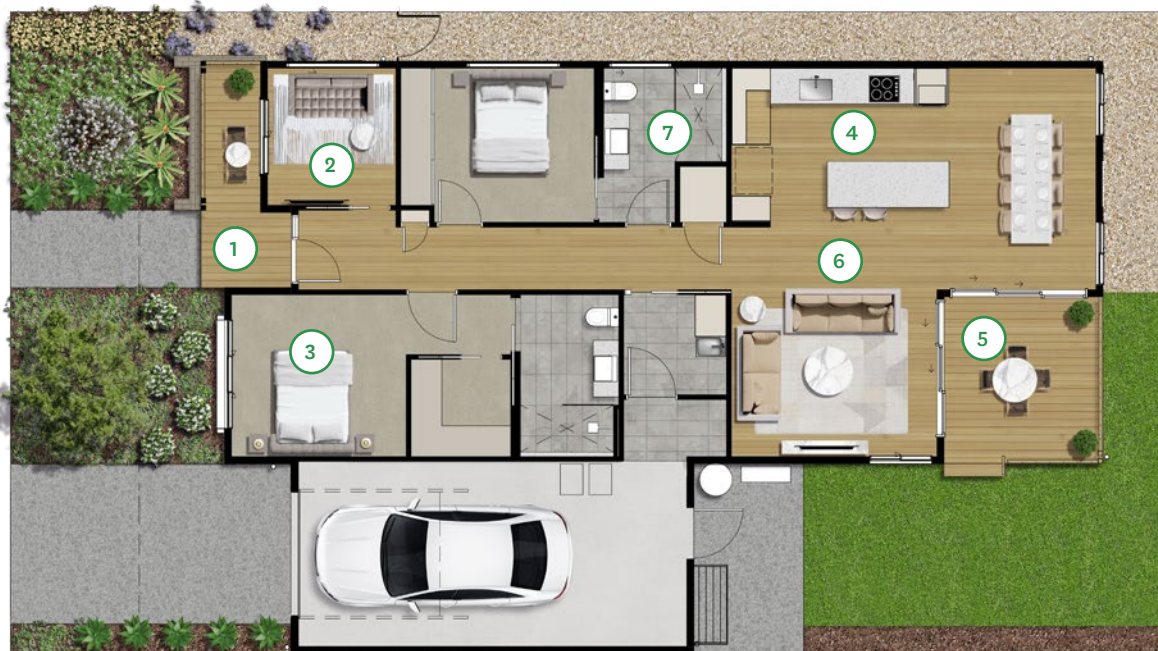
	Scheme: Contrasting	Scheme: Light & Bright	Scheme: Warm & Earthy
Facade: Double Gable			
Facade: Gable			
Facade: Hip			

Lot style:

Tasman

The big brother of the Otway! Tasman is a 2.5-bedroom home that includes a multi-purpose room with views out to the porch and overlooking the beautiful streetscape. The second bedroom features its own ensuite, making it perfect for visiting guests. The generous kitchen space is a chef's delight, connected to the open-plan dining, living and outdoor alfresco areas for the perfect indoor/outdoor entertaining experience.

Tasman



TYPICAL FLOORPLAN



NEED MORE GARAGE SPACE?

Optional 1.5 and 2 garage spaces available on select sites.

HOUSE AREA

Living Area	119m ²
Garage Area	29m ²
Outdoor Dining Area	10m ²
Front Verandah Area	6m ²
Total Area	164m²

This document is supplied solely for the purpose of providing an indicative floor plan and facade of the nominated home type that may be constructed within the proposed Thrive Community at Minta and is not intended to be used for any other purpose. Subject to the lot selected, the floor plan orientation may change. The details shown in or with this plan are based on information available to Stockland at the time of creation (September 2021). The living areas specified are approximate only. Furniture not included.

1. Spacious front verandah to watch the day go by or meet your neighbours
2. Multi-purpose room with a view to your front verandah
3. Private main bedroom with tiled ensuite and walk-in robes

4. Fisher & Paykel appliances, Caesarstone benchtops and an abundance of storage
5. Rear deck connected to internal living areas
6. Open plan living area flows seamlessly through to a generous covered outdoor alfresco deck
7. Spacious tiled bathroom

Tasman facades

Facade: **Hip**
Scheme: **Warm & Earthy**



	Scheme: Contrasting	Scheme: Light & Bright	Scheme: Warm & Earthy
Facade: Double Gable			
Facade: Gable			
Facade: Hip			

Lot style:

Whitsunday

The Whitsunday is the epitome of simplicity and functionality. Beautifully efficient in its design, it comes with all the quality inclusions you'd expect, there are three generous bedrooms, two bathrooms, a front veranda and private alfresco area to enjoy. And the seamlessly flowing open-plan kitchen, dining and living areas benefit from uplifting natural sunlight all year round.

Whitsunday



TYPICAL FLOORPLAN



NEED MORE GARAGE SPACE?

Optional 1.5 and 2 garage spaces available on select sites.

HOUSE AREA

Living Area	125m ²
Garage Area	29m ²
Outdoor Dining Area	10m ²
Front Verandah Area	10m ²
Total Area	174m ²

This document is supplied solely for the purpose of providing an indicative floor plan and facade of the nominated home type that may be constructed within the proposed Thrive Community at Minta and is not intended to be used for any other purpose. Subject to the lot selected, the floor plan orientation may change. The details shown in or with this plan are based on information available to Stockland at the time of creation (September 2021). The living areas specified are approximate only. Furniture not included.

1. Spacious front verandah to watch the day go by or meet your neighbours
2. Private main bedroom with tiled ensuite and walk-in robes
3. Fisher & Paykel appliances, Caesarstone benchtops and an abundance of storage

4. Rear deck connected to internal living areas
5. Open plan living area flows seamlessly through to a generous covered outdoor alfresco deck
6. Spacious tiled bathroom

Whitsunday facades

Facade: Double Gable
Scheme: Warm & Earthy



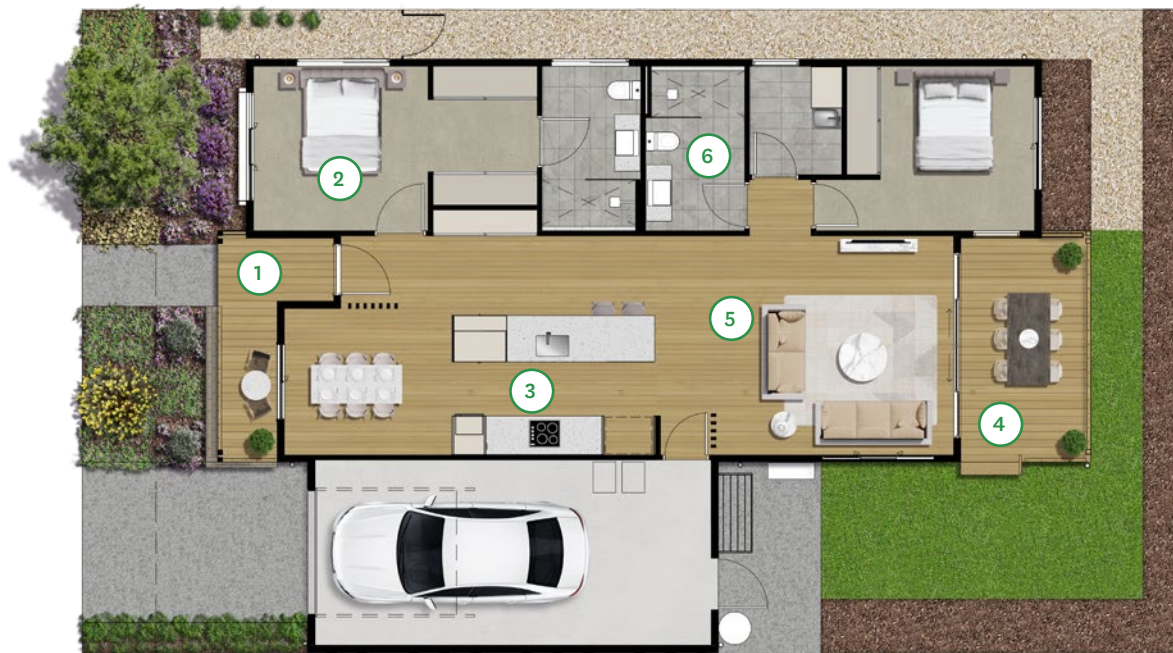
	Scheme: Contrasting	Scheme: Light & Bright	Scheme: Warm & Earthy
Facade: Double Gable			
Facade: Gable			
Facade: Hip			

Lot style:

Yarra

The entertainer of the range with open-plan living from front to back, the focus of the Yarra is the impressive central kitchen featuring an attractive island bench to gather around. And not only does the generous master bedroom have a walk-in robe and ensuite for the hosts to enjoy, there's a spacious second bedroom with plenty of storage for friends or family to spread out in when they visit.

Yarra



TYPICAL FLOORPLAN



NEED MORE GARAGE SPACE?

Optional 1.5 and 2 garage spaces available on select sites.

HOUSE AREA

Living Area	110m ²
Garage Area	30m ²
Outdoor Dining Area	11m ²
Front Verandah Area	6m ²
Total Area	157m²

This document is supplied solely for the purpose of providing an indicative floor plan and facade of the nominated home type that may be constructed within the proposed Thrive Community at Minta and is not intended to be used for any other purpose. Subject to the lot selected, the floor plan orientation may change. The details shown in or with this plan are based on information available to Stockland at the time of creation (September 2021). The living areas specified are approximate only. Furniture not included.

1. Spacious front verandah to watch the day go by or meet your neighbours
2. Private main bedroom with tiled ensuite and walk-in robes
3. Fisher & Paykel appliances, Caesarstone benchtops and an abundance of storage

4. Rear deck connected to internal living areas
5. Open plan living area flows seamlessly through to a generous covered outdoor alfresco deck
6. Spacious tiled bathroom

Yarra facades

Facade: Double Gable
Scheme: Warm & Earthy



	Scheme: Contrasting	Scheme: Light & Bright	Scheme: Warm & Earthy
Facade: Double Gable			
Facade: Gable			
Facade: Hip			

Design your home at Thrive

Scan the QR code to go to
our Home Visualiser tool
and see what your home
could look like at Thrive.



Ready for your next chapter?

Find out how you can flourish at Thrive.

Call **1800 72 71 70**

or email

thrive.berwick@stockland.com.au



Stockland

Disclaimer: This document is provided solely for the purpose of providing general information within the Thrive Berwick Community and is not intended to be used for any other purpose. The contents of this document are based on information available to and the intention of Stockland at the time of printing (September 2021) and Stockland reserves the right to make changes to the document at any time prior to exchange of contracts for sale or if this document is attached to a contract of sale then in accordance with the terms of that contract for sale. Stockland accepts no liability for any loss or damage arising from the improper use or reliance on this document or its contents.