

MINTA

The Terraces

.....

Colour Schemes & Inclusions



Stockland



creationhomes

Where memories are made

Colour scheme: Light House type shown: Franklin A



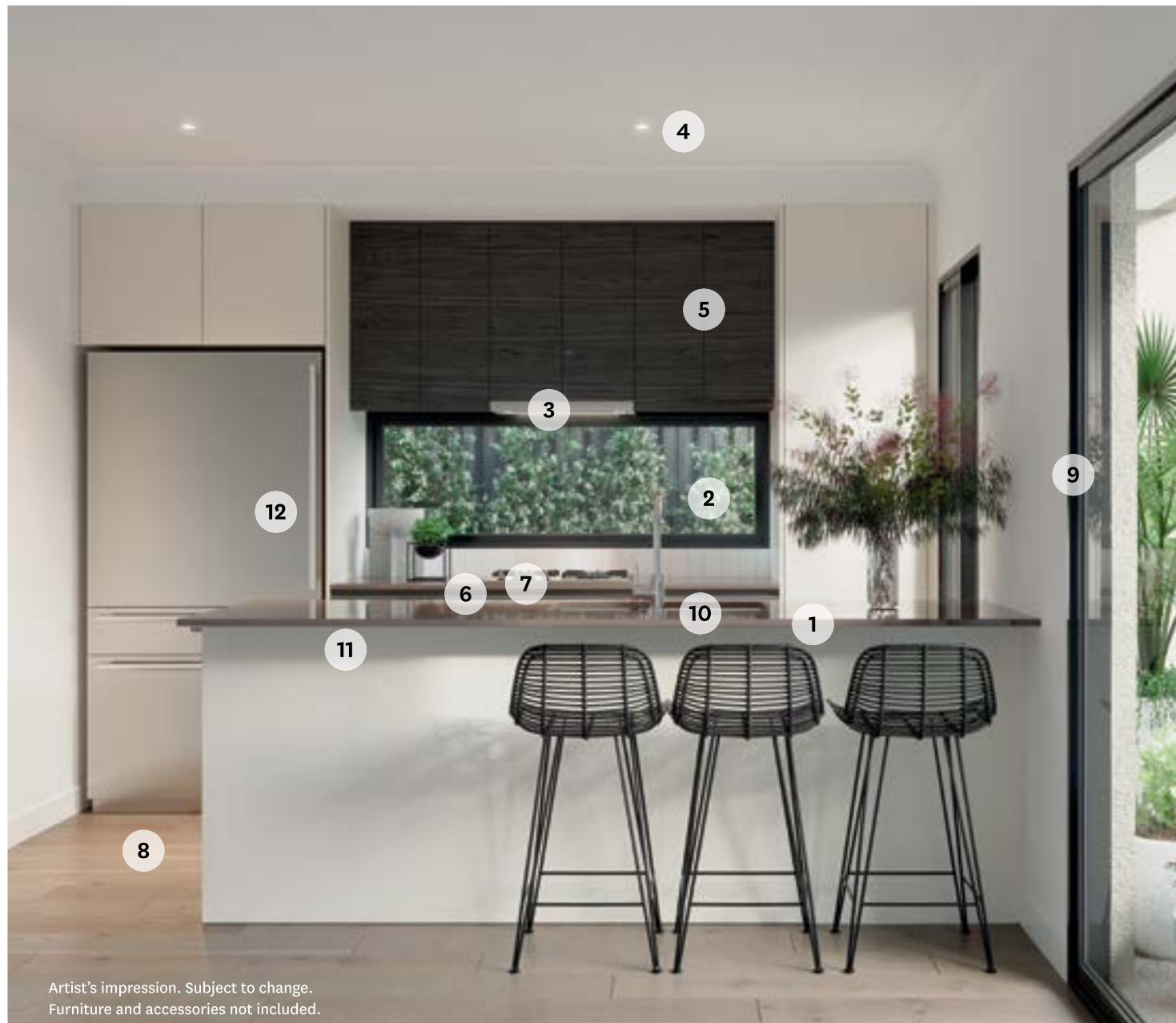
Artist's impression. Subject to change.
Furniture and accessories not included.

- 1. 20mm reconstituted stone benchtops
- 2. Tile splashback as standard (glass splashback as pictured)*
- 3. Stainless steel under-mount rangehood

- 4. LED downlights
- 5. Laminate finish joinery
- 6. Laminate drawers with soft closers

Create the perfect atmosphere for your kitchen with selected townhomes available in a light or dark scheme. Complete with stainless steel appliances, quality finishes, breakfast bar, clever storage solutions and more. From family nights to entertaining friends – your haven is the place to create your favourite dishes and unforgettable memories.

Colour scheme: Dark **House type shown:** Franklin A



Artist's impression. Subject to change.
Furniture and accessories not included.

- 7. 600mm stainless steel built-in oven and cooktop
- 8. Timber-look laminate flooring
- 9. Powder-coated aluminium windows and sliding doors

- 10. Double bowl stainless steel under-mount sink*
- 11. 600mm stainless steel dishwasher (WELS 4 star, 12 litres per wash)^
- 12. Water point.

*Refer to lot floorplan to confirm if inclusion is applicable.

^Full WELS information for each WELS product will be provided prior to settlement. Final WELS products will be equal to or more efficient than the specified star rating and flow rate.

A touch of contemporary charm

Colour scheme: Light House type shown: Franklin A



Artist's impression. Subject to change.
Furniture and accessories not included.

1. Chrome finish bath spout and mixer (WELS 5 star, 6 litres per minute)^
2. Bathtub*
3. Semi frameless shower screen

4. Feature laminate cabinet
5. Tiles to floor, shower area and splashback
6. 20mm reconstituted stone benchtop

Pamper yourself in our contemporary designed bathrooms. Finessed with generous storage and bright, clean lines that create a fresh ambience with elegant charm. A space that's designed to be enjoyed.

Colour scheme: Dark **House type shown:** Franklin A



- 7. Toilet suite (WELS 4 Star, 4.5 litres per flush [full], 3.0 [half], 3.4L [average])^
- 8. Chrome shower on rail (WELS 3 Star, 9 litres per minute)^

- 9. Chrome towel ring
- 10. Chrome finish tap and mixer (WELS 6 star, 4 litres per minute)^
- 11. Polished edge & frameless mirror over vanity units

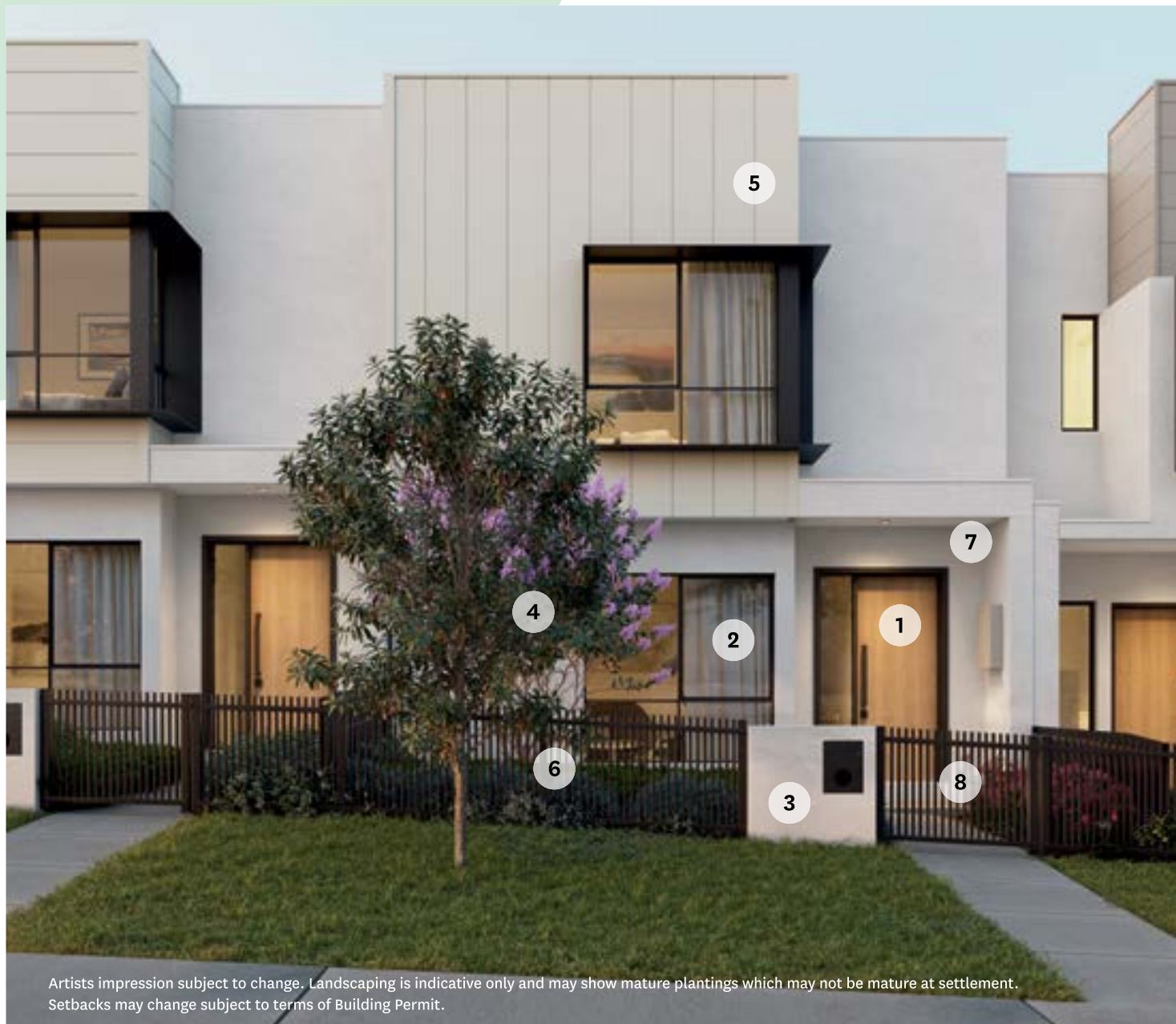
*Refer to lot floorplan to confirm if inclusion is applicable.

^Full WELS information for each WELS product will be provided prior to settlement. Final WELS products will be equal to or more efficient than the specified star rating and flow rate.

A place you're proud to call home

House type shown: Franklin

Feel a sense of pride every time you come home, with a sleek exterior that's just as stylish as it is functional. With impeccable attention to detail, including a feature fence, modern letterbox and landscaped yards – your doorstep sets a beautiful tone for your new abode.



1. Painted timber door
2. Powder-coated aluminium windows
3. Rendered letterbox
4. Fully landscaped front and rear yard

5. Combination of rendered lightweight and James Hardie Axon/Stria or Metal Cladding construction.
6. Powder-coated metal front fence and gate
7. Sensor external light to front entrance
8. Exposed aggregate footpath and porch

Inclusions

General:

Design

Combination of rendered lightweight and James Hardie Axon/Stria or Metal Cladding construction
Metal roof sheeting

Sustainable Design

Minimum 6 Star NatHERS rating
Gas Continuous Flow hot water service
LED downlights throughout

Heating/Cooling

Reverse-cycle split system into main living room, bedroom 1 and second living room*

Windows

Powder-coated aluminium windows and sliding doors

External Doors

Painted timber door
Remote-controlled panel lift garage door

Blinds

Roller blinds to living, dining, study and bedrooms*

Interior Finishes:

Ceiling Height

2550mm throughout (wet areas may vary)

Internal Doors

Painted timber doors

Door Furniture

Privacy lever handles to bathroom/ensuite and powder room
Lever and dead-lock to external doors

Floor Coverings

Timber-look laminate flooring to main living area, kitchen and ground floor hallway*
Tiles to bathroom, ensuite, powder room and laundry*
Wool blend carpet to all bedrooms, stairs and all other areas*

Fixtures and Fittings:

Kitchen Appliances

600mm stainless steel built-in oven
600mm stainless steel cooktop
600mm stainless steel dishwasher (WELS 4 Star, 12 litres per wash)^
Stainless steel under-mount range hood

Kitchen Joinery

20mm reconstituted stone benchtops
Laminated finish
Laminate drawers with soft closers

Kitchen Fixtures

Double bowl stainless steel under-mount sink (3 bed homes)
1.5 bowl stainless steel under-mount sink (2 bed homes)
Tiled splashback*
Chrome sink mixer (WELS 4 Star, 7 litres per minute)^

Laundry

Stainless steel compact tub with cabinet
Mixer tap (WELS 4 Star, 7 litres per minute)^
Tiled splashback

Ensuite/Bathroom

20mm reconstituted stone benchtop
Feature laminate cabinet
Semi-recessed basin
Polished edge & frameless mirror over vanity units
Semi-frameless shower screen
Toilet suite (WELS 4 Star, 4.5 litres per flush [full], 3.0 [half], 3.4 [average])^
Tiled shower with floor waste or shower over bath*
Tiled splashback
Bathtub*
Chrome finish shower on rail (WELS 3 Star, 9 litres per minute)^
Chrome finish bath spout and mixer (WELS 5 star, 6 litres per minute)^
Chrome finish towel rail, shower shelf and toilet roll holder
Chrome finish tap and mixer (WELS 6 Star, 4 litres per minute)^
Chrome towel ring (to bathroom only)

Electrical

TV points to main living, bedroom 1 and second living room*
3 USB charging points
Door bell

External:

Landscape

Fully landscaped front and rear yard

Others

Rendered letterbox
Sensor external light to front entrance
External light to rear yard
Exposed aggregate footpath, porch and terrace
Clothesline
Powder-coated metal front fence and gate
Metal rear and side fence*

*Refer to lot floorplan to confirm if inclusion is applicable

^Full WELS information for each WELS product will be provided prior to settlement. Final WELS products will be equal to or more efficient than the specified star rating and flow rate.

MINTA

.....

Soldiers Road (near intersection of Chase Boulevard)

Berwick, VIC 3806

P: 13 52 63

stockland.com.au/minta

minta@stockland.com.au



Stockland

This document is provided solely for the purpose of providing an indicative list of standard inclusions for the proposed development called Stockland's Minta Stage 8 Terraces and is not intended to be used for any other purpose. Stockland is only responsible for the delivery of the land. The Townhomes will be delivered by Creation Homes. All information contained in this brochure regarding the Townhomes is based on information provided to Stockland by Creation Homes and Stockland does not accept liability for loss arising from the information provided by Creation Homes. Stockland reserves the right to make changes to the information contained in this document at any time prior to you entering into a contract for sale with Stockland. Customers should review the inclusions contained in the contract for sale. The contents of this document are based on the intention of, and information available to, Stockland as at the time of publication (July 2021) and may change due to future circumstances. If this document is attached to a contract for sale, Stockland reserves the right to make changes to the information contained in this document in accordance with the terms of the contract for sale. Unless this document is attached to a contract of sale: (1) this document is not legally binding on Stockland; (2) Stockland does not give any warranty in relation to any information contained in this document; and (3) Stockland does not accept any liability for loss or damage arising as a result of any reliance on this document or its contents. Full WELS information for WELS products will be provided prior to settlement. Final WELS products will be equal to or more efficient than the specified star rating and flow rate.