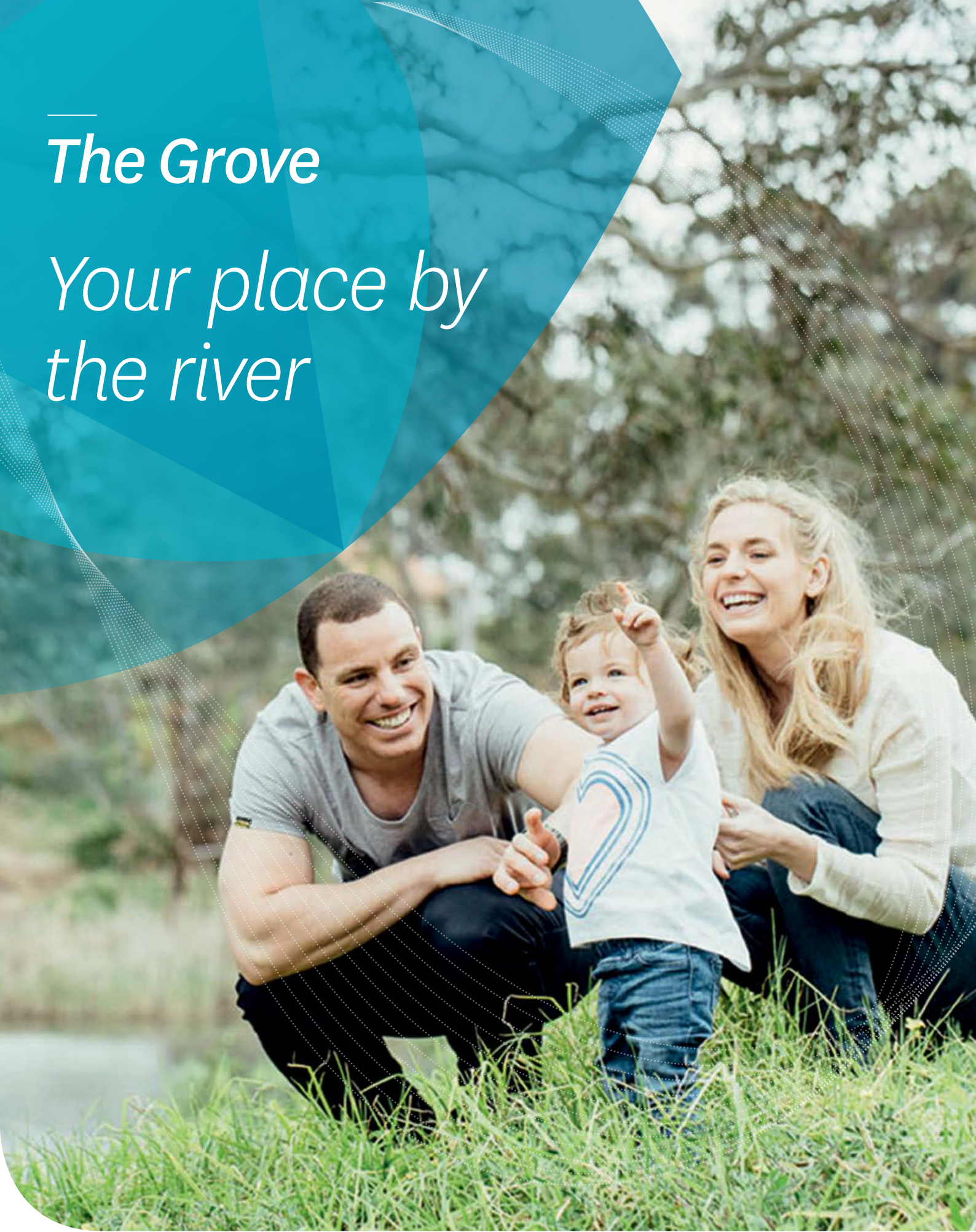


*The Grove*

*Your place by  
the river*



**Stockland**  
*it's your place*

THE GROVE



## Hoppers Crossing



# Ten reasons to make The Grove my place

## 01. A PLACE THAT GROWS WITH YOU

The Grove brings a new standard of living to this highly sought-after region in Melbourne's western corridor. Our thriving young community will grow with you and your family, providing endless opportunities for you to reach your full potential.

## 02. A UNIQUE PLACE WHERE NATURE MEETS CONVENIENCE

The natural setting of Davis Creek and Werribee River offer a tranquil ambience just moments from everyday conveniences. Take a walk along the many paths winding throughout this relaxed community to make your way to a buzzing proposed town centre where you can catch up with friends, or enjoy a casual creekside picnic with your family.

## 03. A PLACE WHERE YOU CAN LIVE THE LIFE YOU IMAGINED

Our modern and beautifully-presented community will have everything you need to create your dream lifestyle. With a proposed primary and secondary school, shops, community facilities, a retirement village and so much more, everything you imagine for your future is at The Grove.

## 04. A PLACE WHERE YOUR WELLBEING IS YOUR GREATEST WEALTH

With plenty of open space and sporting facilities, there are numerous opportunities for an active and healthy lifestyle within The Grove. Our community will include a sporting reserve, shared bike and walking paths, and playgrounds for even the youngest of active bodies.

## 05. A PLACE WHERE NEIGHBOURS LOOK OUT FOR EACH OTHER

From the very first day, The Grove will foster a sense of community spirit that will see neighbours just like you, who are proud of their home and feel safe within it, and look out for one another. Community events encourage residents to connect with like-minded people, creating a supportive and safe environment for all.

## 06. A PLACE THAT HAS OPPORTUNITY FOR EVERYONE

Located just 31 kilometres from Melbourne's CBD and close to the Tarneit Train Station, The Grove is located in a prime position with easy access to all services. Our community is also just minutes from the brand new Werribee Employment District, which will offer 56,000 new jobs for the local area.

## 07. A PLACE WHERE KIDS GET THE BEST START IN LIFE

Both a Primary School and Secondary School are proposed for The Grove, adding to a number of highly regarded childcare centres, kindergartens and schools already existing in the area. With so many options, an excellent education awaits for your child.

## 08. A PLACE YOU WILL BE PROUD TO CALL HOME

The Grove will hold the same high standards as its other coveted communities, making The Grove a place you will always be proud of. At The Grove, you will feel a great sense of pride when you move into your brand new home, designed just the way you want it. With Stockland's design guidelines and careful community planning, you can be confident that you are setting yourself and your family up for the future.

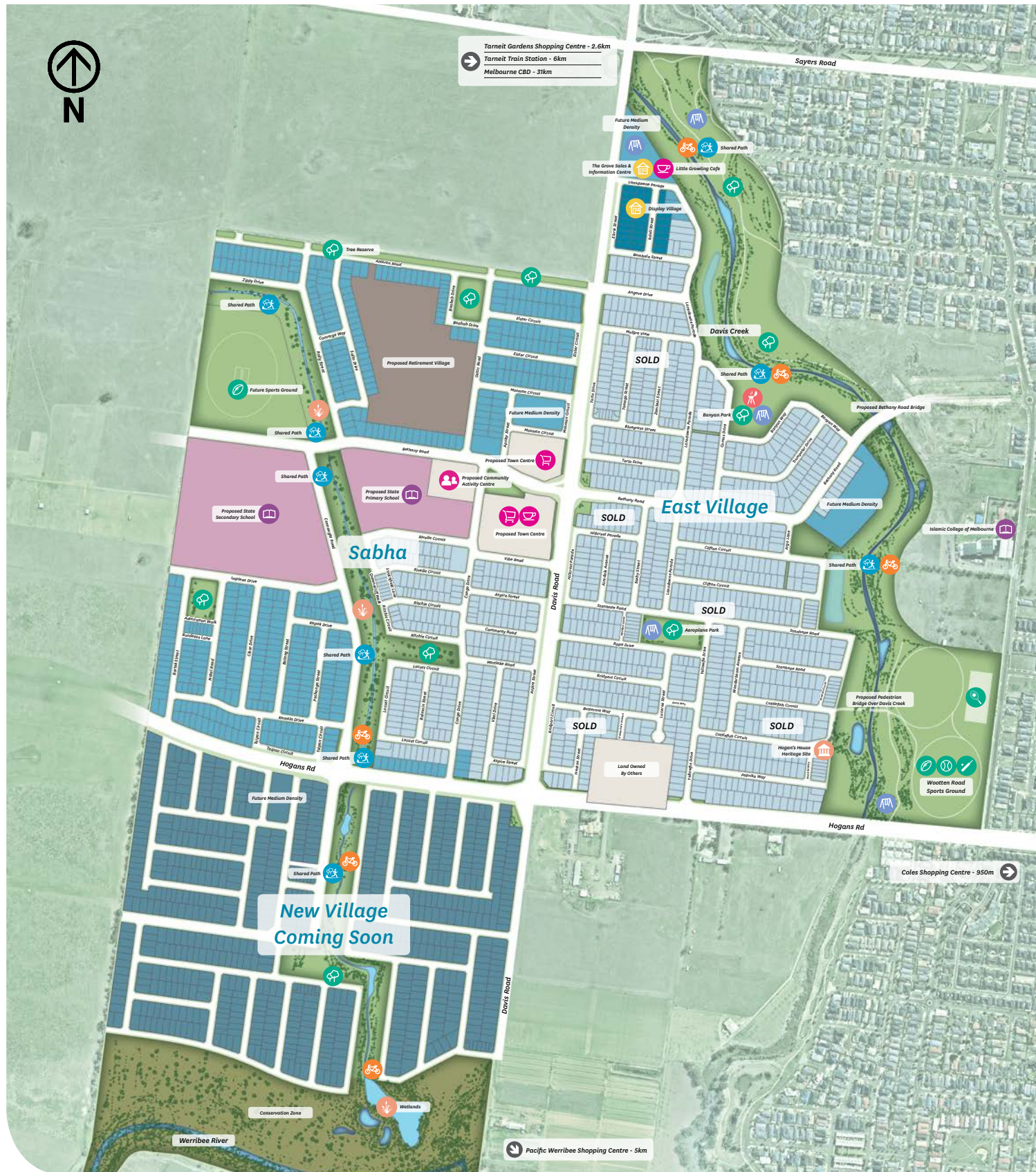
## 09. A PLACE THAT INSPIRES

The Grove's display village offers a wide range of beautifully-designed homes from Melbourne's leading builders and showcases the latest innovations in products and designs. All the inspiration that you need to build your dream home is in one convenient place.

## 10. A PLACE THAT IS YOURS

By joining this community from the outset, you can contribute to the creation of a place like no other in Melbourne's West and fully enjoy everything The Grove has to offer. A place to belong, a place to grow and a place to thrive.

To keep up to date with everything that is happening at The Grove, like our Facebook page [facebook.com/stocklandthegrove](https://facebook.com/stocklandthegrove)



#### SHOPPING & AMENITIES

Proposed Town Centre  
 Proposed Community Activity Centre  
 Proposed Retirement Village  
 Moments from Coles Tarnet West and Tarnet Gardens Shopping Centres  
 10 minute drive to Pacific Werribee Shopping Centre with Myer, restaurants, cafes and Village Cinema  
 15 minute drive to Stockland Point Cook Town Centre

#### PUBLIC TRANSPORT & ACCESS

Located 31 kilometres from Melbourne's CBD  
 Just minutes from Tarnet Train Station  
 Close to Bus Route 442 with connections to Pacific Werribee Shopping Centre and Hoppers Crossing train station

#### DISPLAY VILLAGE

The Grove Display Village

#### PARKS & OPEN SPACE

Creeks, waterways & wetlands  
 Parklands and playgrounds  
 Future sporting oval  
 Walking paths along Davis Creek  
 Cycling paths along Davis Creek  
 BBQ area  
 Adjoins the Wootton Road sporting ovals & facilities (Home of the Tarnet Titans)

#### EDUCATION & CHILDCARE

Proposed public primary and secondary school  
 Existing childcare centres within the local area  
 Just minutes to Westbourne Grammar, Good News Lutheran College, Melbourne Islamic College & Bethany Catholic Primary School







# The Grove Sales & Information Centre

Corner Davis Road & Sayers Road, Tarneit VIC 3029

Open daily: 10am – 5pm

P: 13 52 63

[stockland.com.au/thegrove](http://stockland.com.au/thegrove)

[facebook.com/thegrovetarneit](https://facebook.com/thegrovetarneit)

This brochure is provided solely for the purpose of providing an impression of the development called "The Grove", as well as the approximate location of existing and proposed facilities, amenities, services or destinations, and the contents are not intended to be used for any other purpose. Any statements of distance or size are approximate and for indicative purposes only. Stockland makes no representations and gives no warranties about the future development potential of the site, or the current or future location or existence of any facilities, amenities, services or destinations. All images and statements are based on information available to, and the intention of, Stockland at the time of creation of this brochure (June 2018) and may change due to future circumstances. This brochure is not a legally binding obligation on or warranty by Stockland. Stockland accepts no liability for any loss or damage arising as a result of any reliance on this brochure or its contents.



**Stockland**  
*it's your place*

THE GROVE

