

# MAINWARING COLLECTION

## AFFINA

brightwater

## TIFFANY

LOT NUMBER 20

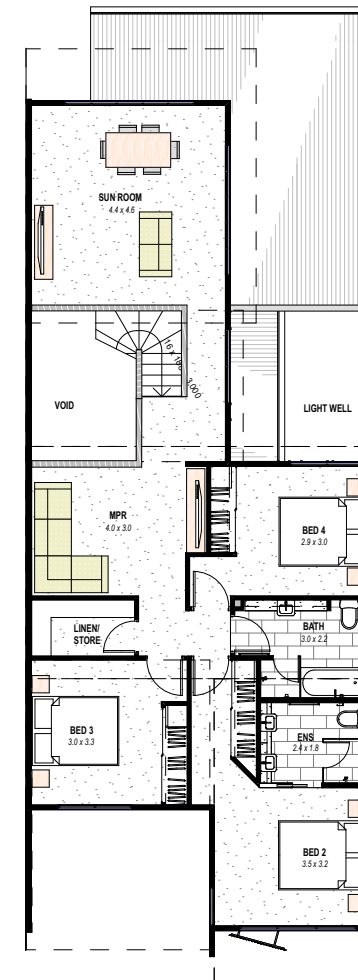
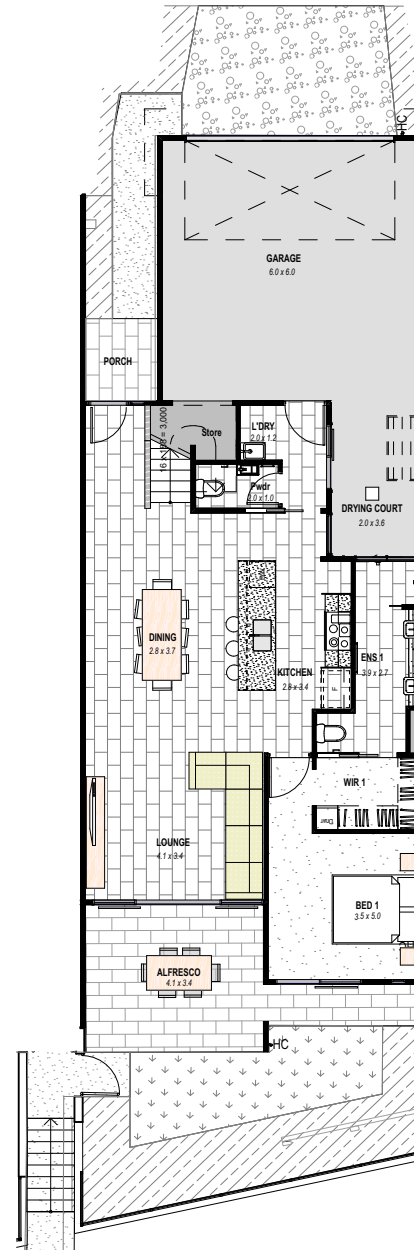
4 3 - 3.5 2



### HOUSE AREA

Internal	192 m <sup>2</sup>
Garage	38 m <sup>2</sup>
External #	27 m <sup>2</sup>
<b>Total House Area</b>	<b>257 m<sup>2</sup></b>

\* Includes Alfresco, Porch and Drying Court areas



### Finishes Schedule

	Carpet
	Floor Tiles
	Concrete Garage / Open Drying Court
	Concrete Pathways
	Concrete Driveway
	Planted area
	Decorative Gravel with pavers as shown
	Turfed Area

### DISCLAIMER

This document is supplied solely for the purpose of providing an indicative floorplan of the nominated townhouse within Stockland AFFINA and is not intended to be used for any other purpose. Unless otherwise specified, dimensions for external or non-party walls are taken from the outside face of such walls, and dimensions for party walls are taken from the mid-line of such walls. All dimensions and areas are approximate. Customers should refer to the dimensions, areas, sale inclusions and specifications in the contract for sale. Furniture, decorative items and the like are shown for indicative purposes only and are not included in the sale. Fixtures for services (including but not limited to air conditioning unit, hot water system, clothes line, meter box and bulkhead ceilings) may or may not be shown on this document and will be housed at locations determined by Stockland at its absolute discretion. Stockland reserves the right to make changes to the information contained in this document at any time prior to you entering into a contract for sale with Stockland. If this document is attached to a contract for sale, Stockland reserves the right to make changes to the information contained in this document in accordance with the terms of the contract for sale. The contents of this document are based on the intention of, and information available to, Stockland as at the time of publication (March 2018) and may change due to future circumstances