

THE DAKOTA

 3  12.5m
 2  157m²

HOME DESIGN

There's no place like home

We're proud to present the Dakota, another fantastic DreamStart display home.

Comprised of 3 spacious bedrooms, 2 bathrooms, and an open plan living area that spills out onto the alfresco, you'll be amazed with all the incredible features that fit inside the Dakota – living space is truly maximised.

Perfect for new home owners, the Dakota will keep you nice and comfortable for years to come!

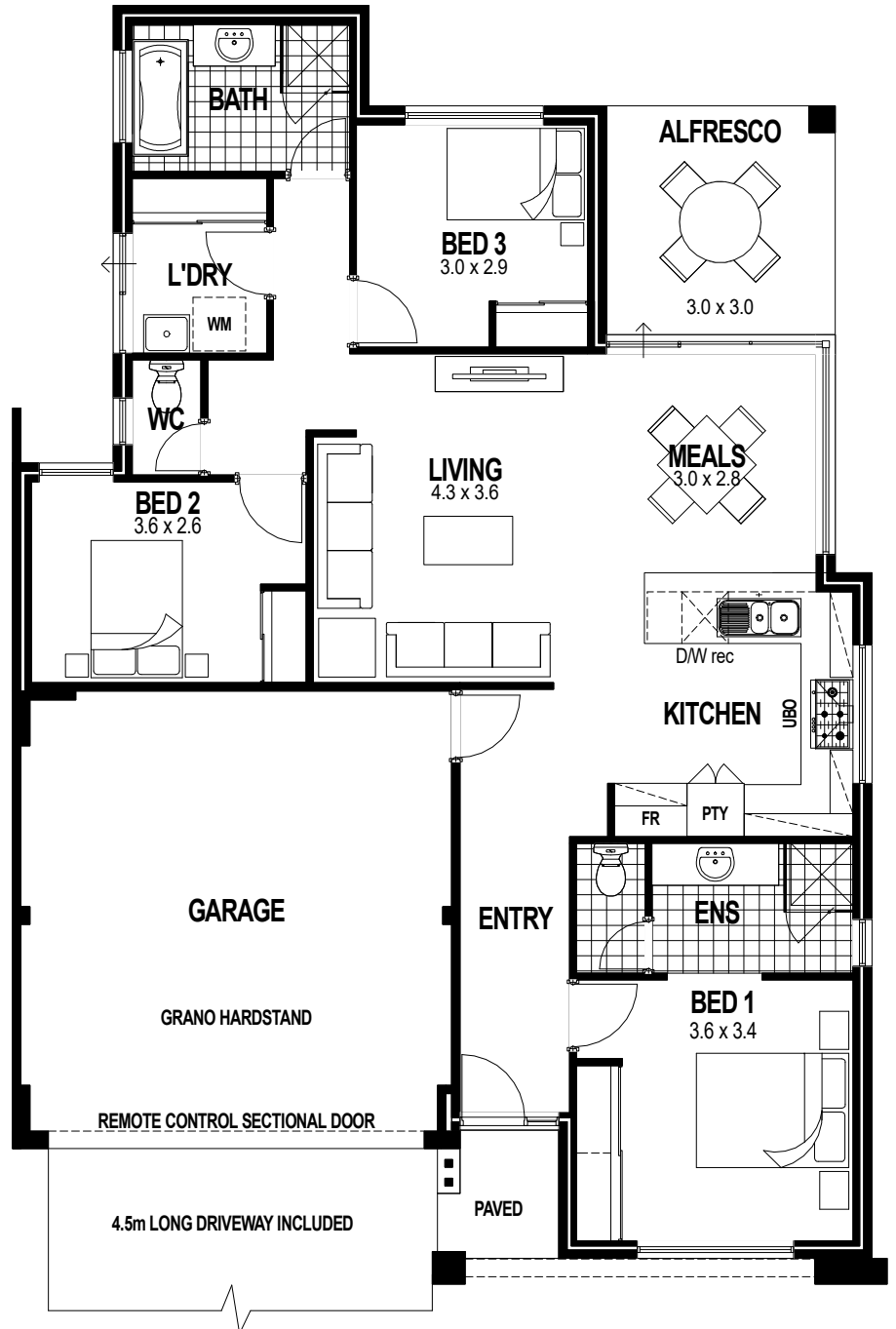
All that good stuff

- Lifetime structural guarantee
- ISO9001 Quality Certification
- Australian made products
- Leading quality first home
- Free finance advisory service
- WA owned independent builder
- Quality fixtures throughout
- Fast construction times
- Built using trusted brands

For detailed inclusions and other information, chat to our team today.

6314 3444

dreamstarthomes.com.au



DreamStart



Your **dream home** starts here.

BC 8867

HOME INCLUSIONS

DISPLAY HOME SPECIFICATION

YOUR EXTERNAL FEATURES

- Stylish feature entry door (painted).
- Choice of window frame colours.
- Double garage.
- Powered sectional door to garage with 2 controllers.
- Concrete hardstand.
- Quality 4.5m long paved driveway (where applicable).
- Front and rear garden taps.
- Extensive range of face bricks included as standard.
- Draft weather seals to hinged doors entering home.
- Cream mortar.
- Complete termite treatment (not partial like other builders).
- Quality paved verandah / portico.
- Family sized hot water system with hot water tempering valve.
- Full construction site clean.
- Choice of Colorbond or concrete tiled roof.

YOUR HOME AND ITS CONSTRUCTION

- WA Owned Independant Builder.
- Quality Assured to better meet your requirements.
- Engineer designed, slab and footings.
- 10m of sewer connection from WC.
- First Class materials used throughout.
- 25 Degree roof pitch included. Guaranteed workmanship.
- The strength of double clay brick construction.
- Insulation to required areas of your home.
- Lifetime structural Guarantee*
- 6 month maintenance period.

YOUR KITCHEN

- EssaStone Benchtops throughout.
- Large pantry with white lined shelves.
- Stainless Steel oven and gas hot plate.
- Hard wearing stainless steel sink.
- Rollers to drawers.
- Quality handles to all kitchen cupboards from builders range.
- Stainless steel tap fittings.
- Large choice of laminates for kitchen.
- Cupboard doors with abs edging.
- Flickmixer tapware.
- Flumed externally stainless steel canopy rangehood
- Over-head cupboards as displayed

YOUR BATHROOM/ENSUITE

- Essa Stone Benchtops throughout.
- 2m tiling to bathroom and ensuite showers.
- China basins.
- Excellent selection of wall/floor tiles including floor tiling to ensuite and bathroom.
- Ceramic soap holder to shower.
- Privacy latch to bathroom and ensuite.
- Cupboards to vanities with stylish door handles
- Deluxe toilet roll holder to WC and ensuite.
- Deluxe towel rail to bathroom and ensuite.
- Framed mirrors with choice of colours.

YOUR BEDROOM

- Shelf and chrome rail to all robe recesses.
- Mirrored sliding robes to minor bedrooms
- Walk-in-robos with shelf and chrome rail (where applicable).

YOUR SECURITY

- Two hardwired smoke detectors.
- Electric RCD safety switch.
- Strong and secure windows glazed from the inside.
- All aluminium sliding doors have double morticed deadlocks.
- Security window locks with convenient system to allow breeze in and keep burglars out.
- Flyscreens to windows and sliding doors. Deadlock to front door and kitchen access doors (where applicable).

SERVICES WE PROVIDE FOR YOU

- Complimentary finance advisory service.
- Dedicated Liaison Officer during construction.
- Full preconstruction site inspection inc. Council building application fee.
- Housing Indemnity insurance.
- Construction insurance premium.
- Engineer's fee's for standard slab.
- Contour Survey fee's.
- Watercorp standard approval fee.
- Full working drawings.
- Professional consultant to advise on building queries

DreamStart



BC 8867

Ready to make your dream a reality?
Call us on **6314 3444** to get started.

Images for illustrative purposes only. Information correct at time of printing.