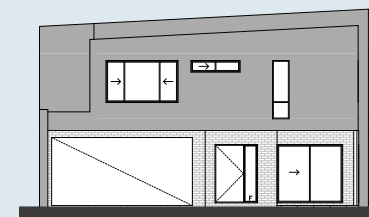




The TERRACES Calleya



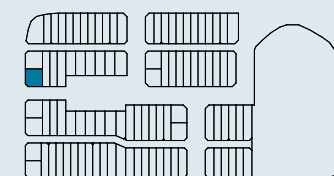
SHEOAK

LOT 3023

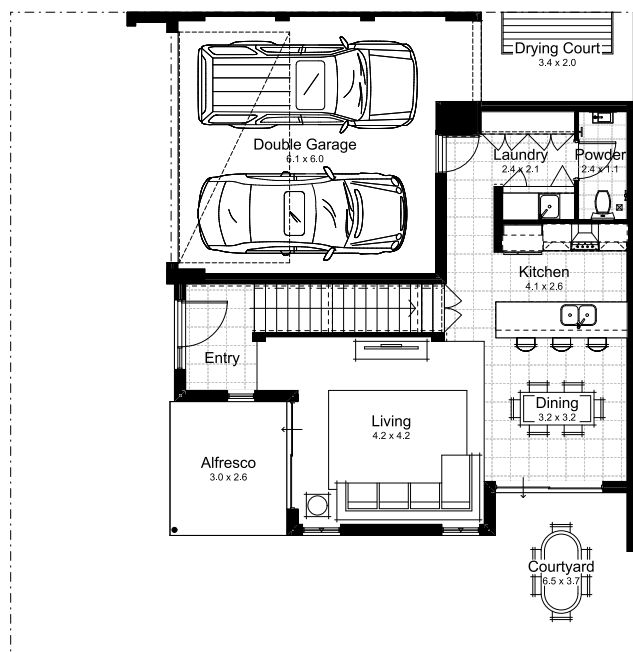


HOUSE AREA

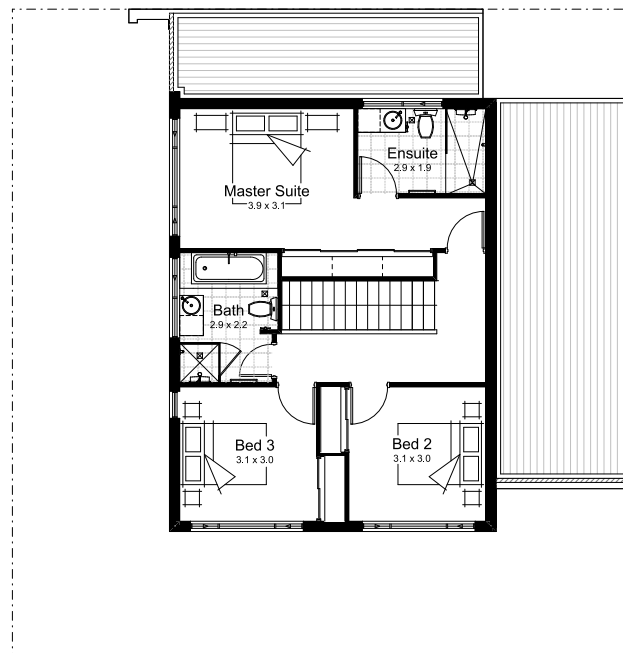
Ground Floor	67.67m ²
Upper Floor	71.08m ²
Garage Area	36.26m ²
Alfresco Area	7.86m ²
Total Area	182.87m ²
Total Lot Area	203m ²



Lot Location



Ground Floor



Upper Floor



This document is supplied solely for the purpose of providing an indicative floor plan and facade of the nominated lot within the proposed development called The Terraces Calleya and is not intended to be used for any other purpose. The contents of this document are based on information available to Stockland at the time of creation [May 2020]. Unless otherwise specified, dimensions for external or non-party walls are taken from the outside face of such walls, and dimensions for party walls are taken from the mid-line of such walls. All dimensions and areas are approximate. Cars, furniture, decorative items and plants are shown for indicative purposes only and are not included in the sale. The contract for sale should be reviewed in relation to the dimensions, areas, sale inclusions and specifications. Stockland reserves the right to make changes, without notice, to the information contained in this document at any time prior to you entering into a contract for sale with Stockland. If this document is included in a contract for sale, Stockland reserves the right to make changes to the information contained in this document in accordance with the terms of the contract for same. Information and images in relation to landscaping are indicative only and may show plantings which may not be mature at settlement. Not liability is accepted for any loss or damage arising from the improper use or reliance on this document or its contents.