

Idyllic Setting
Backdrop for living

Relaxed Lifestyle
How convenient

Meticulous Design
Matters of taste

Tailored Style
In your element

Naturally Balanced
Go with the flow

VISAGE

— Calleya —



Where life comes together



Stockland
it's your place



Andrew Whitson
Group Executive & CEO
Residential

WELCOME

Discover the fruition of life and style

Welcome to the life you have always imagined. Perfectly situated amidst a pristine and tranquil local landscape, yet nearby the future town centre. This new community is close to Cockburn's vibrant shopping precinct and within easy reach of Perth's CBD. Live the best of both worlds at Calleya, Banjup.

Visage is situated close to schools, rail and bus hubs, freeways, arterial roads, parklands, sporting grounds, medical services and a golf course, plus within easy reach of Murdoch University and hospitals.

It's the culmination of inspired architecture, innovation and affordability, with a portfolio of beautiful two and three bedroom designer terrace homes to choose from. A selected number of homes also offer easy-living options, with the living room and master bedroom on the ground floor.

Our collection of architecturally designed terrace homes offer a low maintenance lifestyle with quality fixtures, fittings and intelligent open-plan interiors. With every detail considered, all you need to do is choose a home and beautiful colour scheme.



DISTINCTLY, BEAUTIFULLY YOURS

A beautiful home begins with inspired design - it's where good taste complements practicality and bold design adds distinct accents to individual style.



Artist's impression. Subject to change. Furniture not included.

House type shown: Darmena

IDYLLIC SETTING

Your all-encompassing lifestyle

On every point of the compass you'll discover all the elements that shape Visage into the ideal place to call home. While Cockburn Gateway Shopping Centre is just a short drive away, Calleya's future Town Centre will be ideal for residents who want to shop locally then meet up with friends for a relaxing coffee. Education & childcare, health services, retail shops, train station and leisure facilities are all a short drive, plus you are just four stops by rail from the Perth CBD.



The best of both worlds

Imagine your ideal lifestyle, the natural splendour of landscaped surroundings and the enjoyment of having everything to make your life complete - and all so easily accessible. Visage terrace homes are embraced by nature so you can explore the green open spaces, enjoy fresh air in the local parks, or let the kids run wild in the playgrounds.



THE GREAT OUTDOORS

You'll be surrounded by an abundance of green open space that makes Calleya a sought after location for growing families. There are opportunities at every turn to get outside, get active and enjoy Perth's sublime climate. Plus enjoy free daily fitness sessions and annual movies in the park at Calleya.



THE LOVE OF LEARNING

Perth offers a selection of day care centres and local schools just a short drive away. There is also the leading tertiary institution Murdoch University just an 11km drive away. Calleya sets the best pathways for your family, and it begins right where you live.



TASTE THE GOOD LIFE

With a variety of nearby specialty stores, two supermarkets plus a cafe planned within the future town centre in Calleya, you will be able to grab that all-important morning coffee, do your morning grocery shopping or dine out with friends.



LESS IS SO MUCH MORE

The time you save commuting is time you have to spend enjoying your new lifestyle. Calleya is adjacent to key rail and bus transport hubs, accessible to Perth's freeways, and near key arterial roads. This ideal location ensures you can get where you want to go faster and more efficiently.

LOVE WHERE YOU LIVE

Know your neighbours and be part of a community that shares your appreciation for all the little things that will make Visage such a special place to live. Step out, take a stroll, experience life and enjoy a village atmosphere that is full of warmth and vitality.



A PRISTINE LANDSCAPE



THE BEAUTY
WITHIN

Every Visage terrace home is articulated to capitalise on the openness of broad, polished floors and welcoming natural light, deep into the living spaces.



House type shown: Alcove - Urban cottage scheme

Artist's impression. Subject to change. Furniture not included.

HOME, HEART, HAPPINESS

Visage kitchens are designed to be the heart and soul of the home, with all the ingredients of a welcoming space to eat, drink and enjoy good company.



House type shown: Bower - Urban cottage scheme

Artist's impression. Subject to change. Furniture not included.

METICULOUS DESIGN

Your own personal space

Breathe and relax in your own personal space or enjoy room to roam in comfortable and sociable open-plan areas – perfect for entertaining or time to yourself.



SMART SPACES Our neutral interiors use a gentle colour scheme and the finest finishes to bring you high-quality home comforts, while providing the perfect canvas for you to make your decorative mark.



A SLEEK, MODERN CANVAS

Add colour to your living space. Small touches create a holistic sense of welcome and warmth.



GO GREEN Indoor plants add life and create a relaxing space. Green accents bring colour and texture and can help define spaces within the home.



Artist's impression. Subject to change. Furniture not included.

House type shown: Alcove - Urban cottage scheme

Entertain friends or be entertained, always enjoy

By creating space without barriers, your interiors effortlessly blend with the artfully shaded portico in your garden. Al fresco dining adds a new dimension to your everyday lifestyle.



Stock image.



SERENE AND SOPHISTICATED

Quality and style that is simply beautiful and wonderfully practical. This is your place to unwind in style and leave the outside world to carry on without you.



House type shown: Eclave - Urban cottage scheme

RICH FINISHES

A light touch

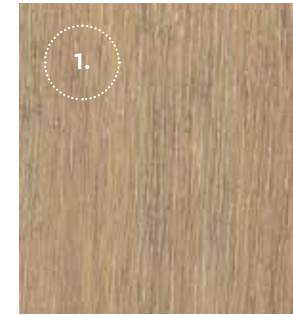


Urban cottage scheme shown

Artist's impression. Subject to change. Furniture not included.

The materials in your Visage home connect to the landscape and architecture, bringing these elements into the interior spaces. The light colour scheme balances the richness of the Raffia flooring and soft taupe bench top to keep your kitchen fresh and bright.

1.
TIMBER FLOORING
1820x190mm
Raffia



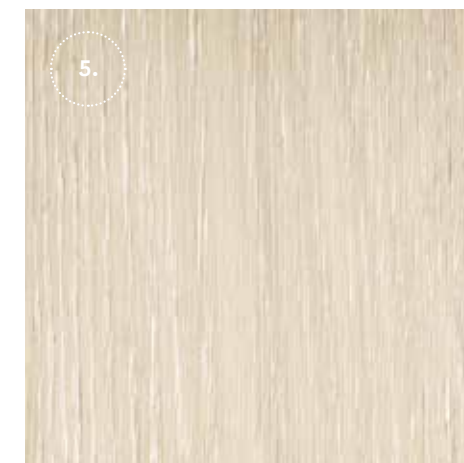
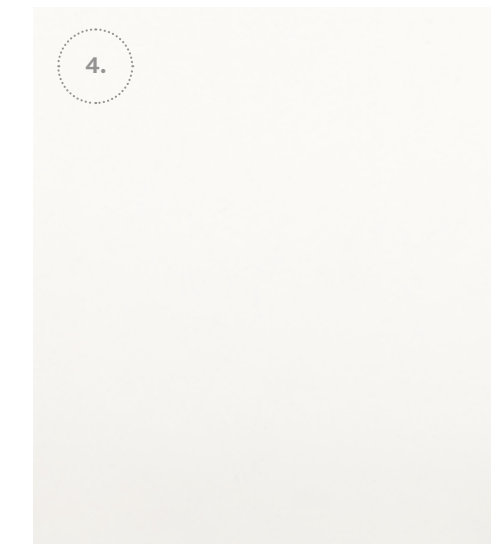
2.
KITCHEN & BATHROOM
BENCHTOPS
QStone 20mm
Taupe



3.
BATHROOM & LAUNDRY FLOOR
& WALL TILE & SPLASHBACK
600x300mm Porcelain
Lumina Ash Natural



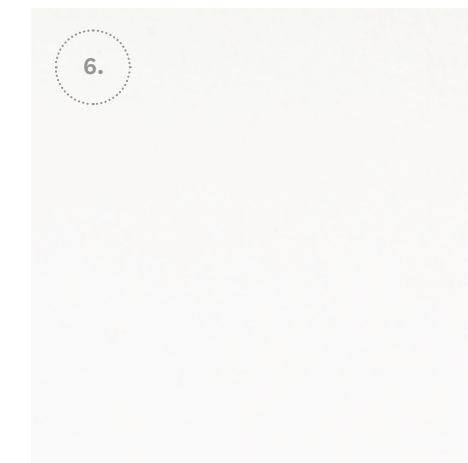
4.
WALL PAINT
Dulux
Vivid White



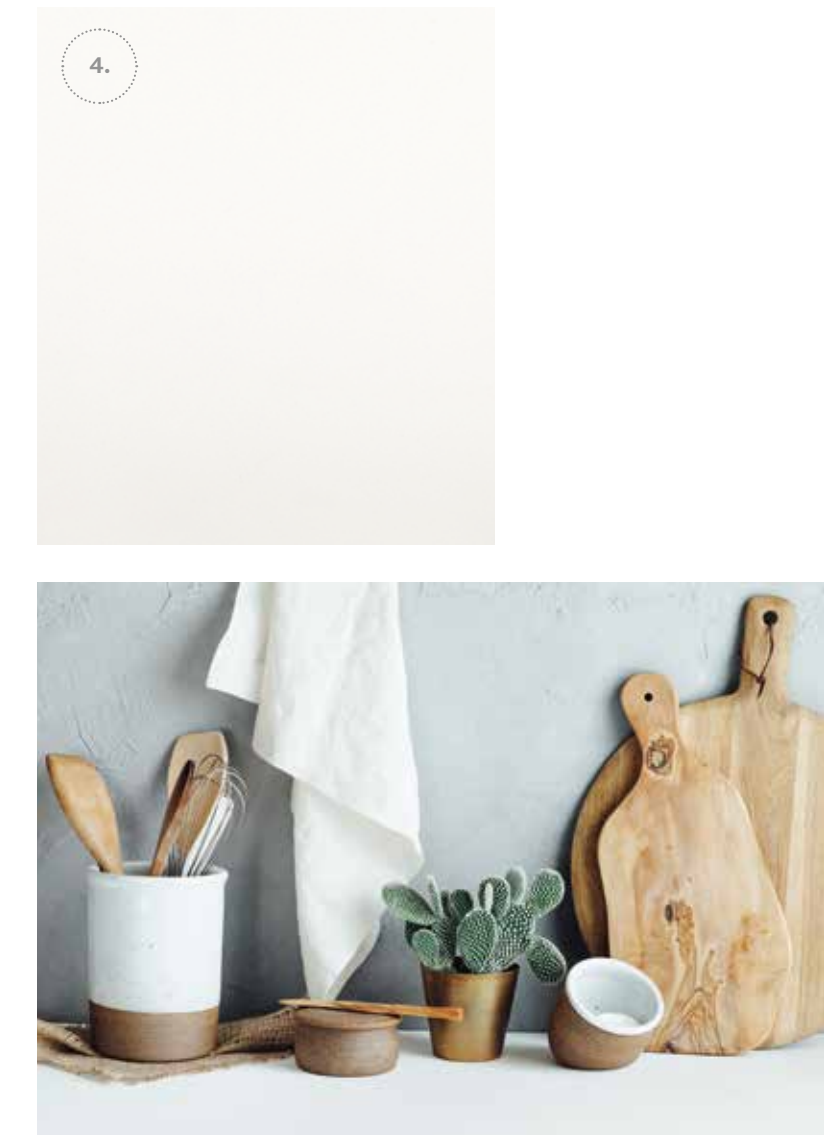
5.
KITCHEN & BATHROOM
CABINETS
White Oak Laminat



6.
KITCHEN OVERHEAD &
BATHROOM CUPBOARDS
Polar White Laminat



7.
CARPET
Chasewater



Taupe QStone benchtops and rich, natural timber flooring complement the modern and neutral interior design.

RICH FINISHES

A darker side



Rural terrace scheme shown

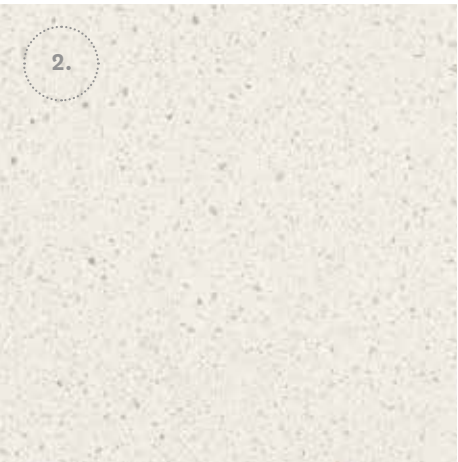
Artist's impression. Subject to change. Furniture not included.

Choose the dark colour scheme and make a statement about your kitchen. Midnight colour cabinets contrast beautifully with the New Frost benchtops, creating a sophisticated and intimate entertaining space.

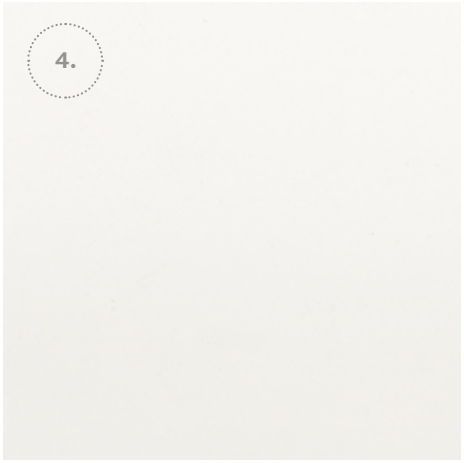
1.
TIMBER FLOORING
1820x190mm
Truffle



2.
KITCHEN & BATHROOM BENCHTOPS
QStone 20mm
New Frost



3.
BATHROOM & LAUNDRY FLOOR &
WALL TILE & SPLASHBACK
600x300mm Porcelain
Lumina Grey Natural



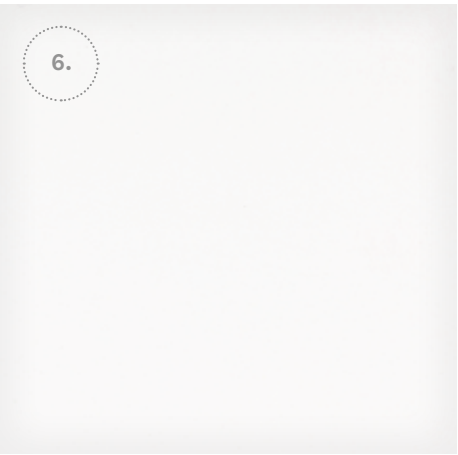
4.
WALL PAINT
Dulux
Vivid White



5.
KITCHEN & BATHROOM
CABINETS
Midnight Laminex



The warm intensity of the dark colour scheme is balanced with soft natural light and clean modern design.



6.
KITCHEN OVERHEAD &
BATHROOM CUPBOARDS
Polar White Laminex



7.
CARPET
Macklin

Behind the vision

Stockland has been creating places that meet the needs of our customers and communities for over 60 years. Throughout this time our customers and communities have been growing, adapting, sharing and changing our places into their places.

That sentiment has made us into Australia's leading property group with places as diverse as residential communities, townhomes, apartments, retirement living villages, retail and more.

We believe, of course, in environmental sustainability. But just as importantly we believe in social sustainability; we create places where communities thrive.

We make the places. You make them your own.

Hames Sharley & Studio 53 We design for life. Our multi-disciplinary, award-winning team combines architecture, urban design, planning, and interior design.

We consider both exterior and interior spaces and how they contribute to our aspirations for public and private life through beauty, scale, form and climate.

We work from inside out and outside in, considering the building users and our clients' needs. We are committed to the highest quality architectural design that contributes to the local sense of place and community.

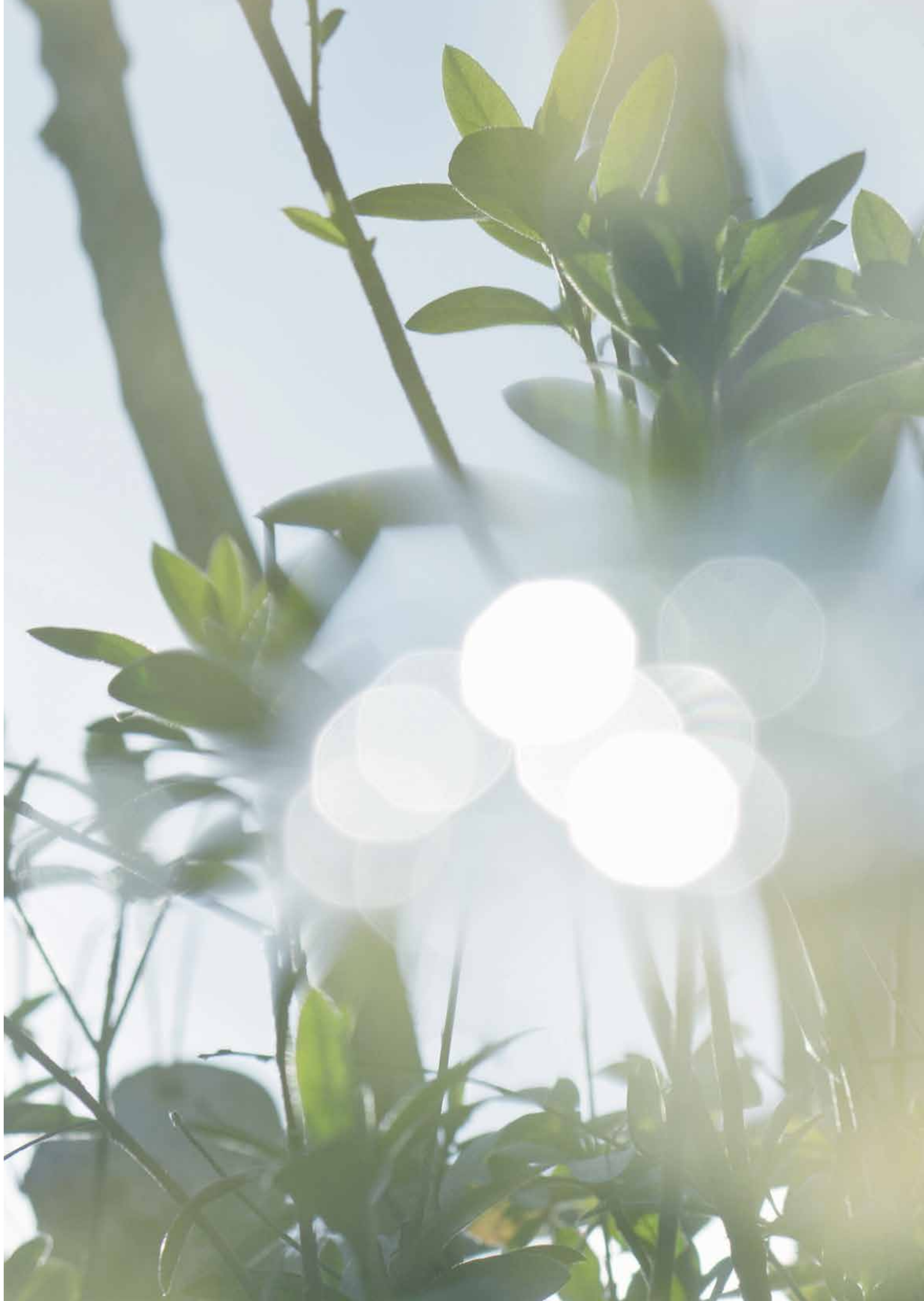
Through an appreciation and understanding of community and client needs, along with our passion for designing spaces and buildings, we're able to do what we do best. Create better living through better design. We design for life.

PLACE Laboratory is a youthful and energetic practice in Perth, with a grounded history in Perth and Western Australia.

At PLACE Laboratory we believe that the public realm is the stage for 'life'. When the public realm is designed well, the combinations and possibilities of life's experiences are infinite. The interplay between buildings and landscape sets the stage.



This brochure is provided solely for the purpose of providing an impression of the proposed development called 'Visage' at Calleya (as well as the approximate location of existing and proposed third party facilities, services or destinations) and the contents are not intended to be used for any other purpose. Any statements of distance, size or area are approximate and for indicative purposes only. No representations and no warranties are given about the future development potential of the site, or the current or future location or existence of any facilities, services or destinations. All images, photographs and illustrations are artistic impressions of 'Visage' at Calleya (including the terrace homes) and are provided for illustrative purposes only. All furniture, furnishings, rugs, decorative items, window coverings, kitchen appliances, mirrors, picture frames, artwork, pot plants and the like shown in images, photographs and illustrations are for illustrative purposes only and are not included in any sale. Images relating to landscaping are indicative only and may show plantings which may not be mature at settlement. All diagrams, images, photographs, illustrations, statements and information are based on information available to Stockland at the time of creation of this brochure (September 2016) and are subject to change without notice. All distance and travel timeframe references in this brochure are estimates only, refer to distance by car or driving time (unless specified otherwise), and are based on information obtained from Google Maps. No diagram, image, photograph, illustration, statement or information amounts to a legally binding obligation on or warranty by Stockland and Stockland accepts no liability for any loss or damage suffered by any person who relies on them either wholly or in part.



Call 13 52 63
stockland.com.au/calleyaterraces



Stockland
it's your place