



Display unit. Furniture is not included.



Display unit. Furniture is not included.

Daydream floorplan

2 bedroom, 2 bathroom and study



Finishes

Kitchen

Floor	Large format tiles
Walls/Ceiling	Painted plasterboard
Splashback	Tiled
Benchtop	Reconstituted stone
Cabinets	Internal White Melamine
Cupboards & Drawers	Laminate (soft closer)
Bin	Slide-out bin inside kitchen cupboard
Sink	Stainless steel one-and-a-half-bowl
Tapware	Bright chrome. WELS Rating: 6 stars
Rangehood	Exhaust ducted externally

Appliances

Wall Oven	Stainless steel wall oven
Cooktop	600mm ceramic cooktop
Rangehood	Stainless steel slide out (ducted externally)
Dishwasher	Dish drawer. WELS Rating: 4.5 stars
Microwave	Space provided

Technology

Internet*	NBN (National Broadband)
Phone/Data Points*	Phone in kitchen, datapoints in living/dining/bedroom
Powerpoints/Light Switches	Large user-friendly outlets
Pay TV*/Free-to-air TV	Living/dining/master bedrooms
Emergency Call System	24-hour INS Emergency Call System
Fire Sprinklers	Installed throughout the building (apartments and common areas)
Air Conditioning	Split system with condenser located on roof
Dryer	Space with reinforcements

Security

Building Entry	Swipe card access to entry and all levels
Car Park/Car Entry	Fully secured carpark
Intercom	Video intercom

Finishes

Bathroom

Floor	Tiled
Walls	Tiled/painted plasterboard (reinforced for future fittings by owner)
Walls/Ceiling	Painted plasterboard
Cabinet	Laminate
Vanity Benchtop	Laminate
Vanity Shaving	Laminate/Mirror
Vanity Basin/Toilet Suite	White ceramic. WELS Rating: 4 stars
Tapware	Bright chrome mixer. WELS Rating: 6 stars
Shower Screen	Semi-frameless glass shower screen
Floor/Shower	Fully tiled and step free
Shower Head	Adjustable hand shower with support rail (main ensuite). WELS Rating: 3 stars
Ventilation	Exhaust ducted externally
Lighting	LED downlights

Bedroom

Floor	Carpeted
Cupboards	Melamine shelving
Windows	Louvre windows for ventilation
Screens	Fly screens

Prices correct as at 09/2018 and is based on the standard plans and specifications. Subject to change. Subject to availability.

Disclaimer of liability: Floorplans and illustrations within are intended to be a visual aid only. Furniture, decorative items, plants and the like are shown for indicative purposes only and not included. The contract should be reviewed in relation to areas, inclusions and specifications. Stockland accept no responsibility as a result of any error, omission or misrepresentation of information.

Daydream floorplan

Typical 2 bedroom, 2 bathroom and study



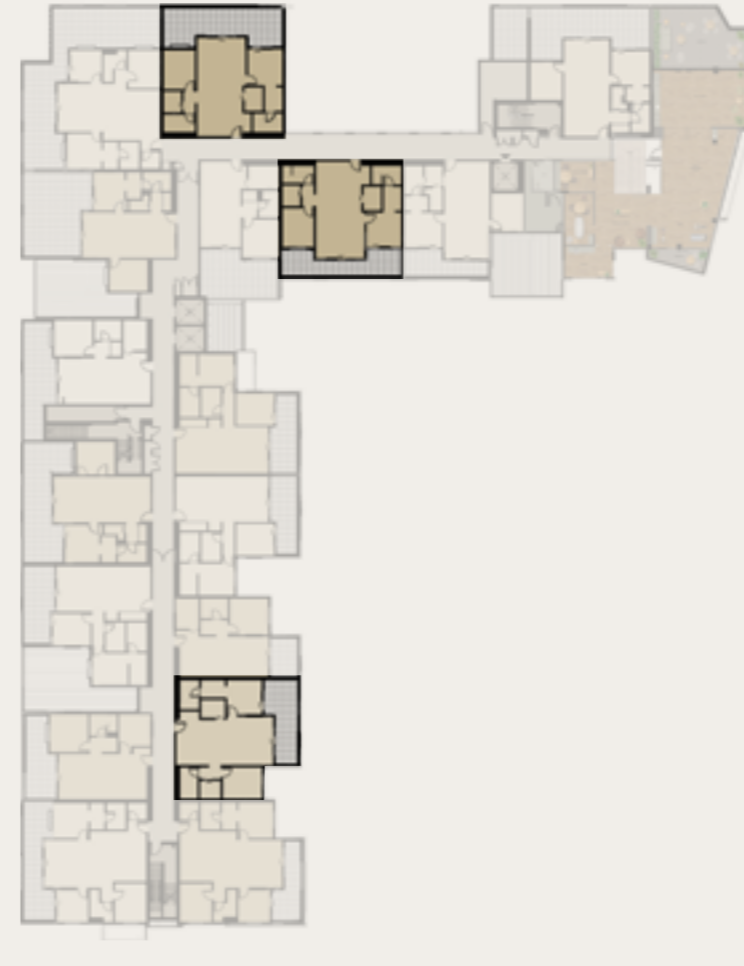
Internal: 96.8m²
External: 21.9m²

Actual sizes may vary.

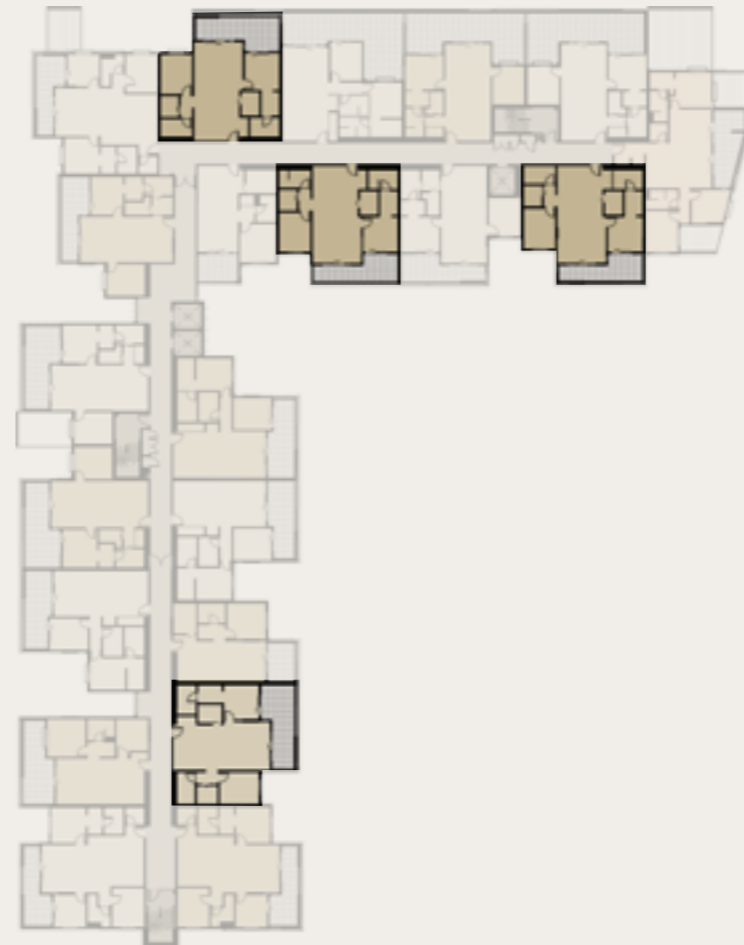


Furniture, decorative items, plants and the like are shown for indicative purposes only and not included.
The contract should be reviewed in relation to areas, inclusions and specifications.

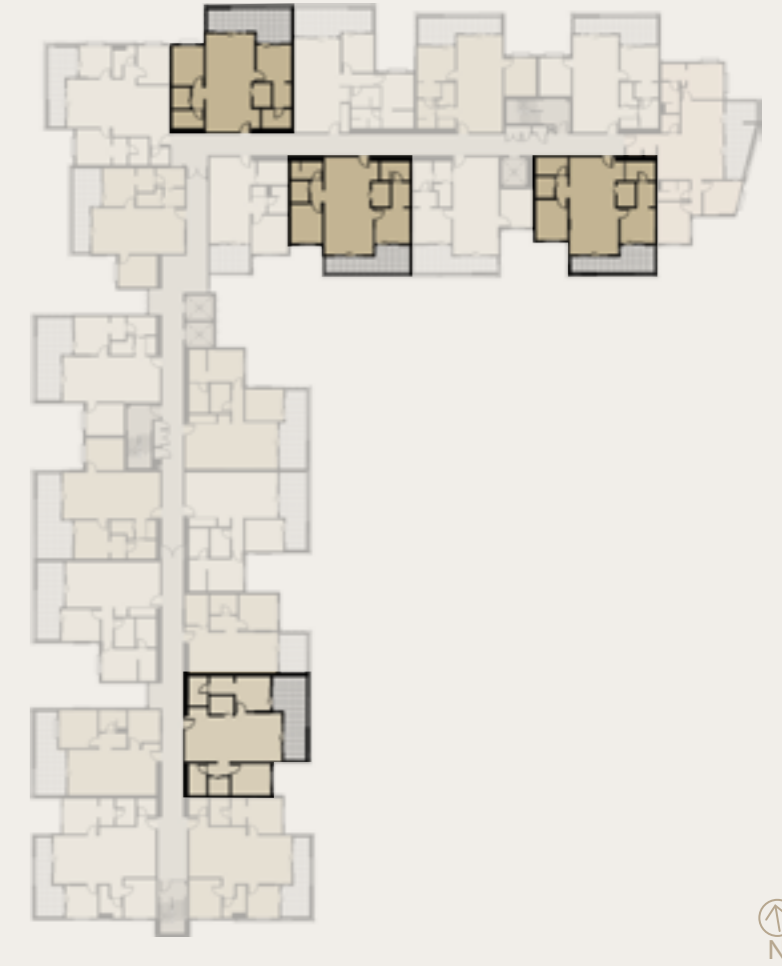
Level 2



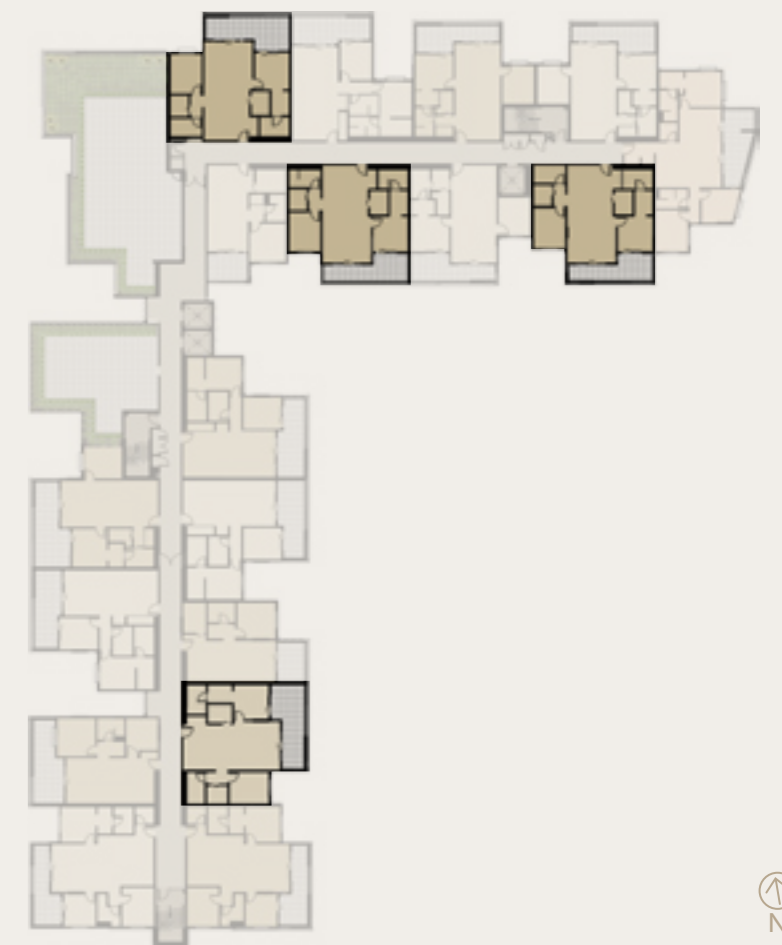
Level 3



Level 4-7



Level 8



Furniture, decorative items, plants and the like are shown for indicative purposes only and not included.
The contract should be reviewed in relation to areas, inclusions and specifications.