

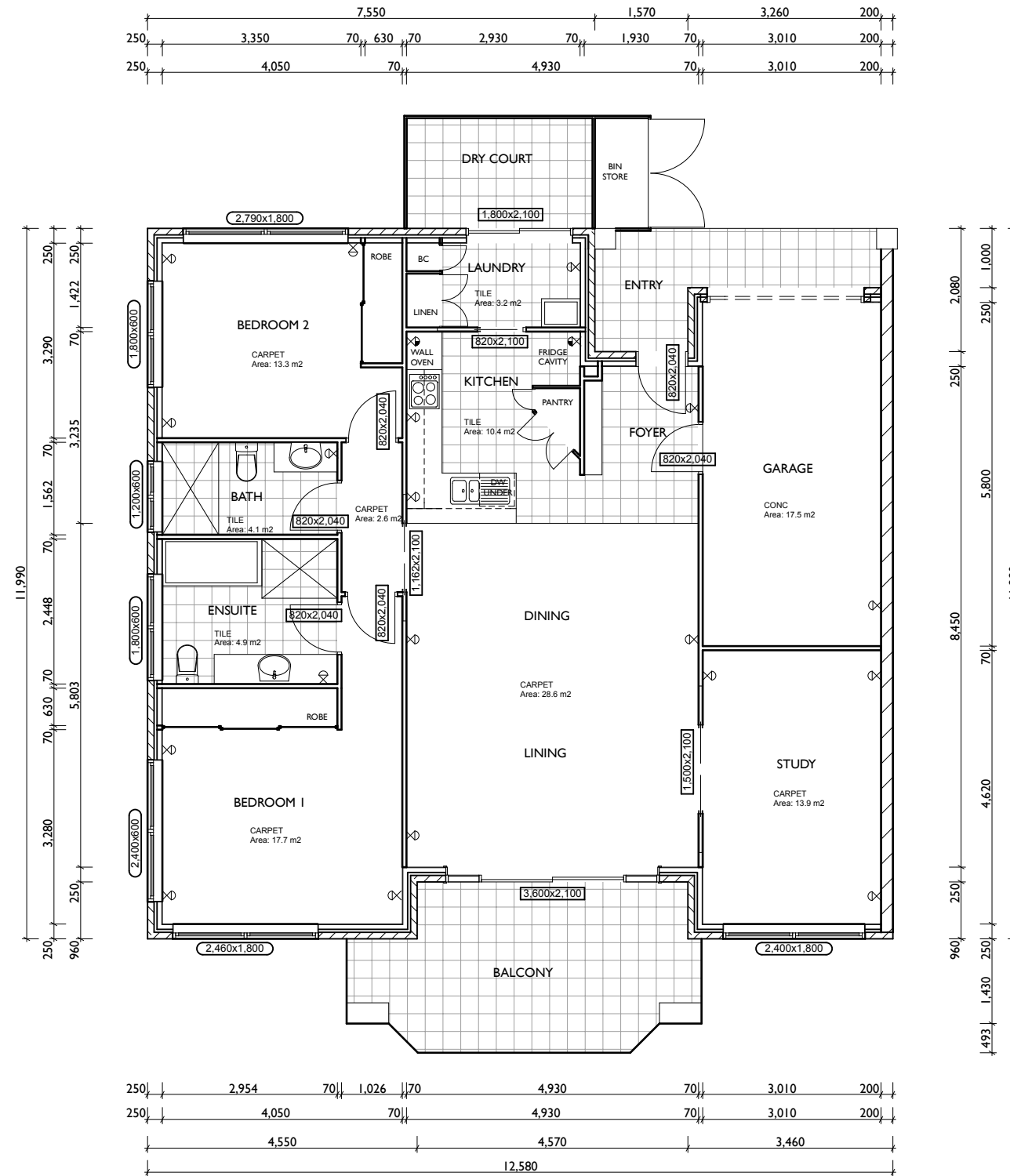
# FARRINGTON GROVE VILLAGE - HAYWOOD\_LEFT

## UNITS - 625,627,635,639,143,145

(LEFT OR RIGHT HAND VERSION TBC)

GENERAL FLOOR AREA- 109.8 M2  
 GFA (INCLUDING GARAGE, PORCH AND EAVES) - 169.2 M2

DOUBLE GPO'S 19 NO  
 SINGLE GPO'S 2 NO  
 FLOOR TILES & VINYL 22.6 M2  
 CARPET 76.1 M2  
 WALL TILES TBC M2  
 CEILING HEIGHT 2.700M



HAYWOOD - LEFT  
 1:100

NOTE - PLANS SHOWN MAY VARY FROM ACTUAL UNIT

no.	revision	date

NOTES:  
 Use figured dimensions in preference to scale. Verify dimensions on site prior to fabrication.  
 Read drawings in conjunction with specification. All documents subject to copyright.

ALL: FFL'S, FGL'S TO AHD



Architect  
 LAMPRECHT ARCHITECTURE  
 PO BOX 431  
 MT ELIZA VIC 3930  
 T 0408 505 691

Client Details  
 STOCKLAND RETIREMENT LIVING

E-mail - scott@lampechtarchitects.com.au

Project  
 FARRINGTON GROVE VILLAGE  
 55 LINKWOOD DRIVE  
 FERNY HILLS, QLD. 4055

Project Number  
 1420

Drawing  
 HAYWOOD\_LEFT  
 Scale AS SHOWN  
 Date 29/08/2015

A27 A

	SINGLE GPO (DEDICATED APPLIANCE)
	SINGLE GPO
	DOUBLE GPO
	DOUBLE GPO EXTERNAL
	DOUBLE GPO (ABOVE BENCHTOP LEVEL)
	DOUBLE GPO & DATA
	EXTERIOR SINGLE GPO
	GAS POINT
	TELEPHONE POINT
	DATA POINT
	TV AERIAL POINT
	VIDEO INTERCOM/DOOR BELL
	SECURITY SENSOR
	SECURITY CONTROL PANEL
	SECURITY KEYPAD CONTROL
	SECURITY STROBE
	DUCTED VACUUM
	STANDPIPE & GARDEN TAP

